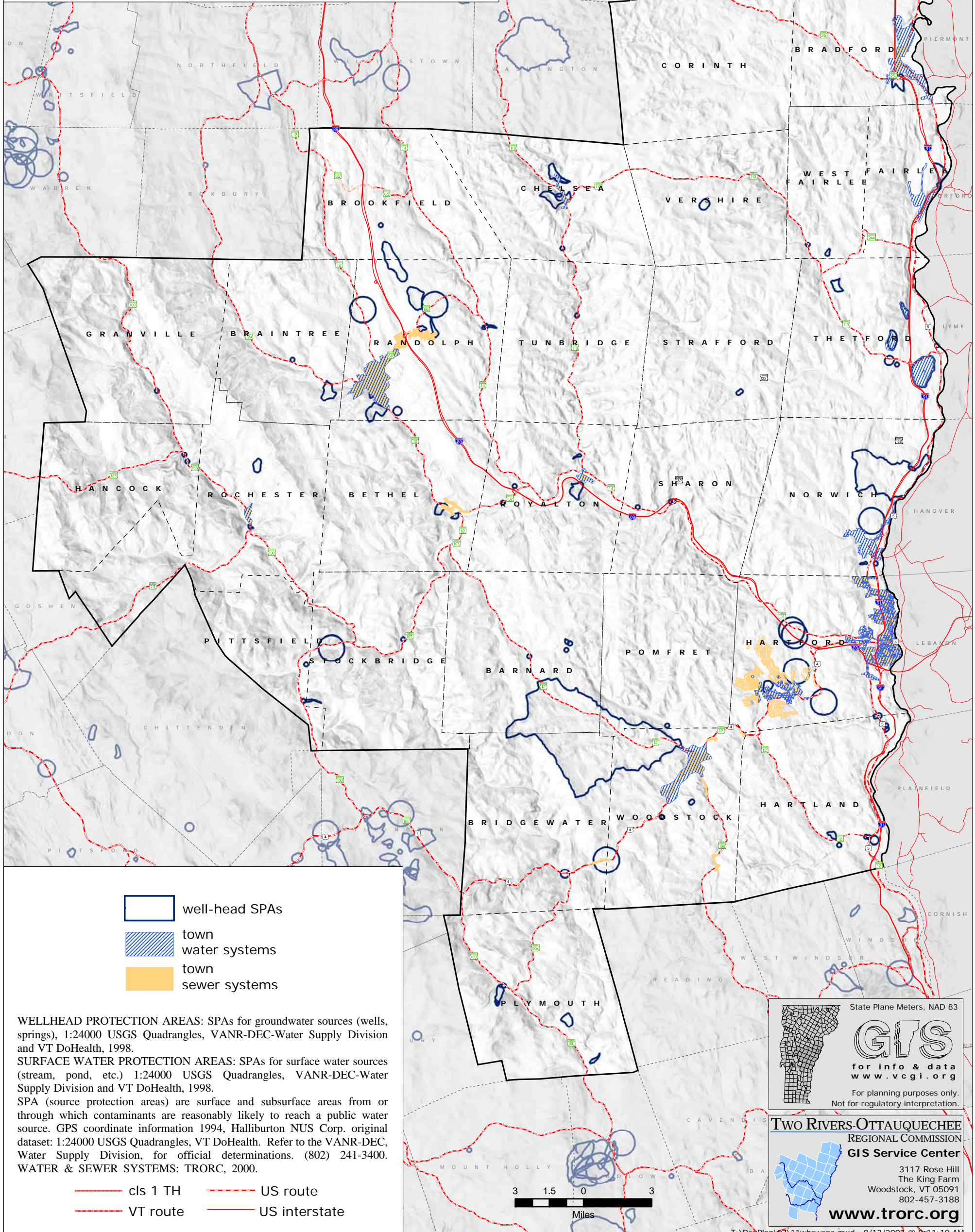





Two Rivers-Ottawaquechee Region of Vermont

Source Protection Areas & Water and Sewer Systems

public & private water sources
well head & surface source protection areas
municipal water & sewer systems

Map 11 of 15
2007 Regional Plan
Effective Date: July 4, 2007





-  well-head SPAs
-  town water systems
-  town sewer systems

WELLHEAD PROTECTION AREAS: SPAs for groundwater sources (wells, springs), 1:24000 USGS Quadrangles, VANR-DEC-Water Supply Division and VT DoHealth, 1998.

SURFACE WATER PROTECTION AREAS: SPAs for surface water sources (stream, pond, etc.) 1:24000 USGS Quadrangles, VANR-DEC-Water Supply Division and VT DoHealth, 1998.

SPA (source protection areas) are surface and subsurface areas from or through which contaminants are reasonably likely to reach a public water source. GPS coordinate information 1994, Halliburton NUS Corp. original dataset: 1:24000 USGS Quadrangles, VT DoHealth. Refer to the VANR-DEC, Water Supply Division, for official determinations. (802) 241-3400.

-  cls 1 TH
-  US route
-  VT route
-  US interstate

State Plane Meters, NAD 83



for info & data
www.vcgl.org

For planning purposes only.
Not for regulatory interpretation.

TWO RIVERS-OTTAUQUECHEE
REGIONAL COMMISSION



GIS Service Center

3117 Rose Hill
The King Farm
Woodstock, VT 05091
802-457-3188

www.trorc.org