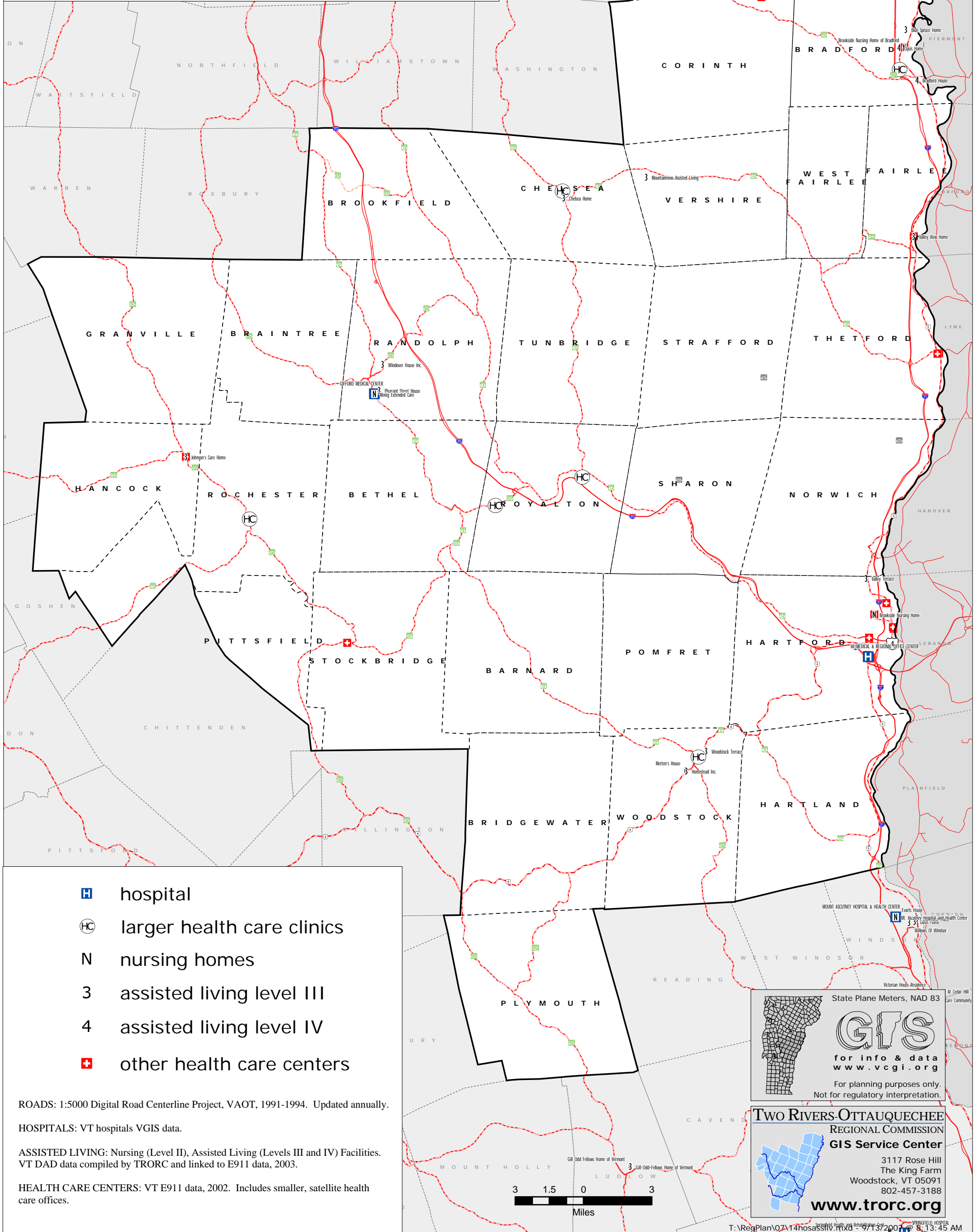





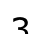


# Two Rivers-Ottauquechee Region of Vermont

## Health Care Facilities

hospitals, health care centers, &  
assisted living facilities


Map 14 of 15  
2007 Regional Plan  
Effective Date: July 4, 2007



-  hospital
-  larger health care clinics
-  nursing homes
-  assisted living level III
-  assisted living level IV
-  other health care centers

ROADS: 1:5000 Digital Road Centerline Project, VAOT, 1991-1994. Updated annually.  
 HOSPITALS: VT hospitals VGIS data.  
 ASSISTED LIVING: Nursing (Level II), Assisted Living (Levels III and IV) Facilities.  
 VT DAD data compiled by TRORC and linked to E911 data, 2003.  
 HEALTH CARE CENTERS: VT E911 data, 2002. Includes smaller, satellite health  
 care offices.

State Plane Meters, NAD 83



# GIS

for info & data  
[www.vcgl.org](http://www.vcgl.org)

For planning purposes only.  
 Not for regulatory interpretation.

**TWO RIVERS-OTTAUQUECHEE  
 REGIONAL COMMISSION  
 GIS Service Center**

3117 Rose Hill  
 The King Farm  
 Woodstock, VT 05091  
 802-457-3188

[www.trorc.org](http://www.trorc.org)