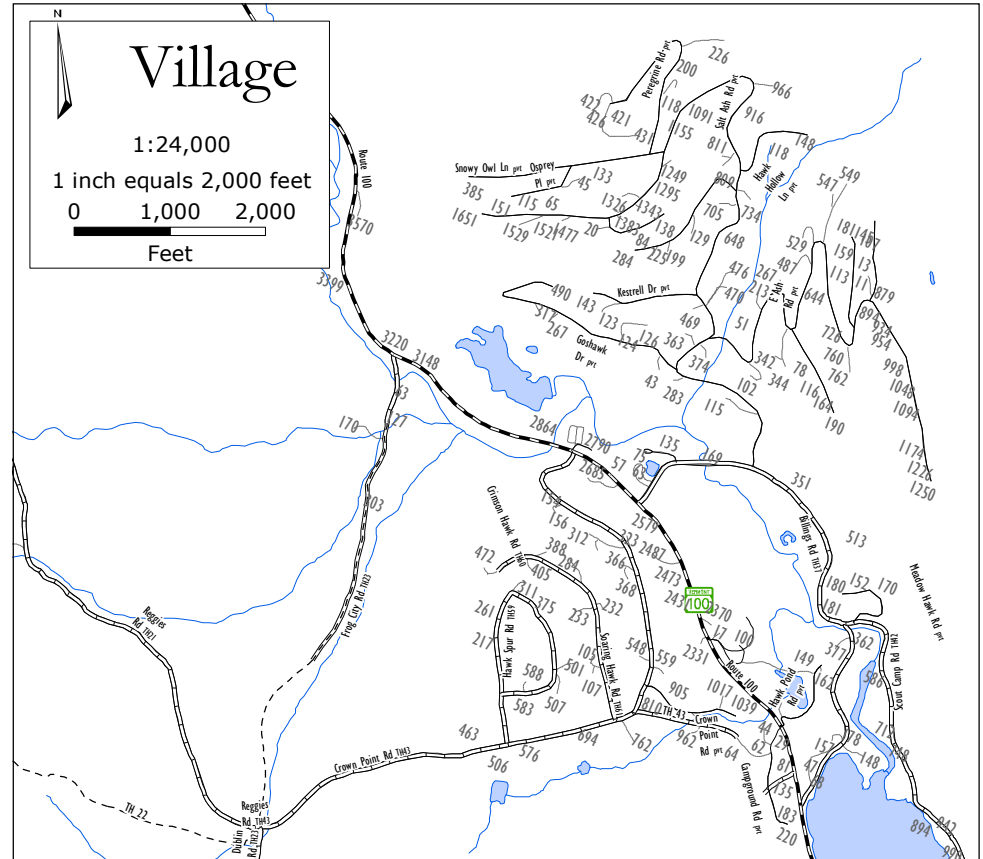
  
**Town**  
 1:45,000  
 1 inch equals 3,750 feet  
 0 0.5 1  
 Miles



- 234 e911 addresses
- e911 drive
- ▬▬▬ TH cls 1 (village)
- ▬▬▬ TH cls 2
- ▬▬▬ TH cls 2 gravel
- ▬▬▬ TH cls 3
- ▬▬▬ TH cls 3 gravel
- ▬▬▬ TH cls 4 gravel
- ▬▬▬ VT forest hwy
- ⋯⋯⋯ trail
- private
- ▬▬▬ VT route
- ▬▬▬ US route
- ▬▬▬ Interstate
- ▬▬▬ rail line

-This map is for reference and emergency response.  
 -This map is not an official class, name or address map.  
 -Not all addresses are shown.  
 -New roads may not be listed.  
 -VT/US routes' names can change in a village or at the village line.  
 -Names/numbering can change at town line on through roads.


 State Plane Meters, NAD 83  
**GIS**  
 for info & data  
[www.vcgi.org](http://www.vcgi.org)  
 For planning purposes only.  
 Not for regulatory interpretation.

**TWO RIVERS-OTTAUQUECHEE**  
 REGIONAL COMMISSION  
**GIS Service Center**  
 3117 Rose Hill  
 The King Farm  
 Woodstock, VT 05091  
 802-457-3188  
[www.trorc.org](http://www.trorc.org)

September 25, 2007  
**E911 Road Names**  
 Plymouth, Vermont