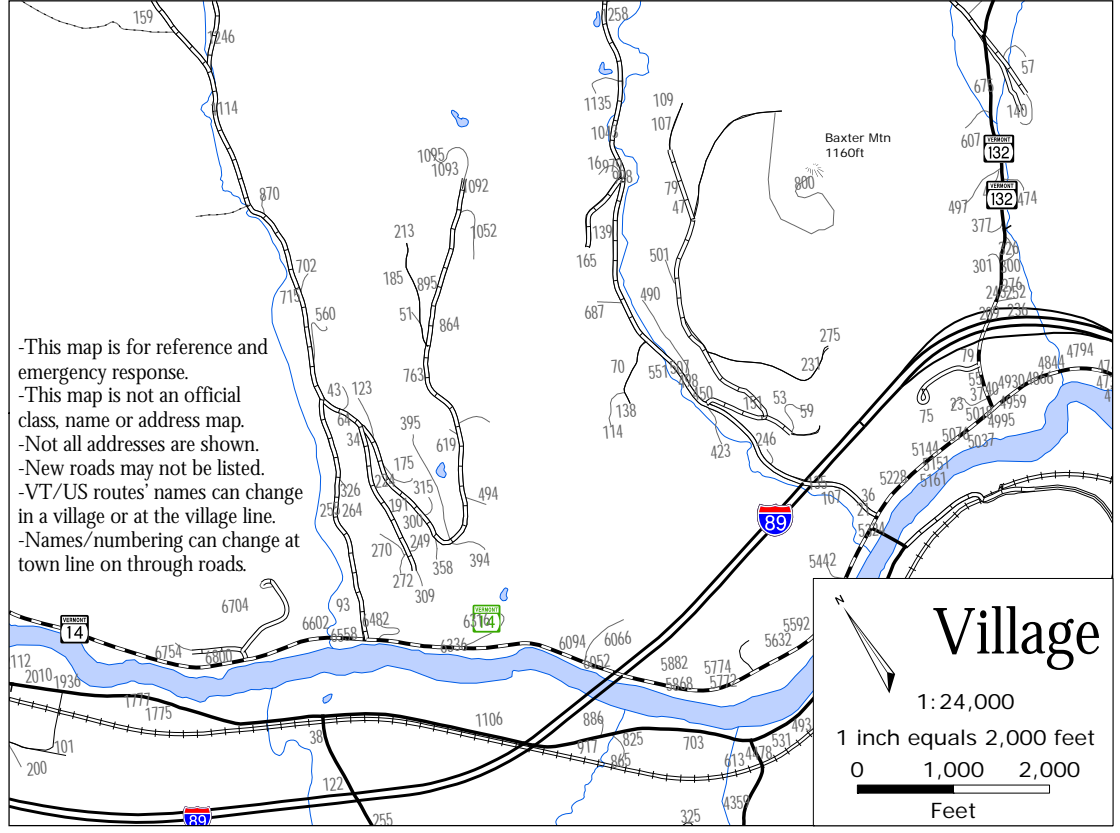
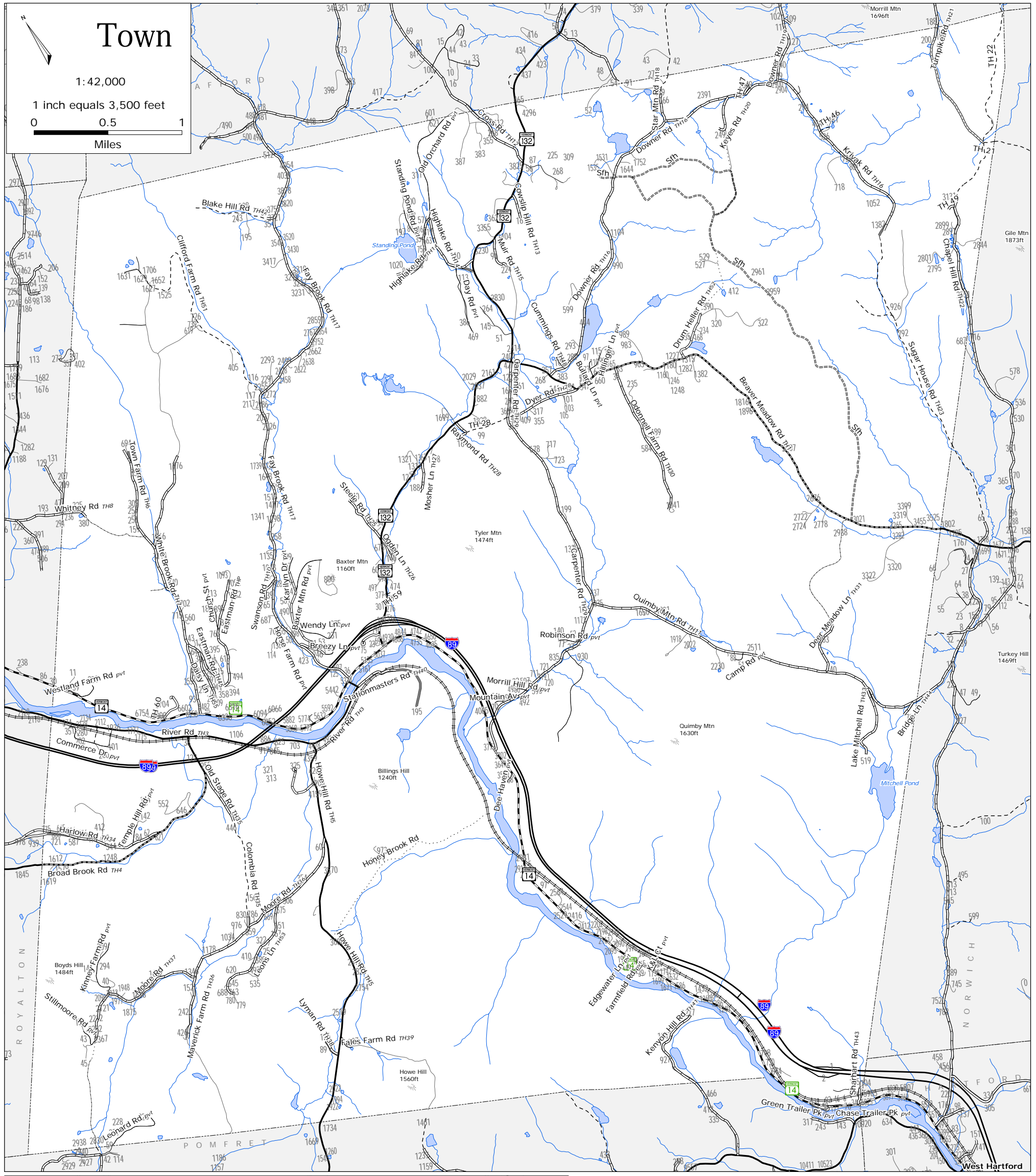
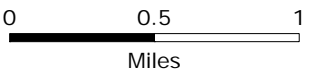


# Town

1:42,000

1 inch equals 3,500 feet



-This map is for reference and emergency response.  
 -This map is not an official class, name or address map.  
 -Not all addresses are shown.  
 -New roads may not be listed.  
 -VT/US routes' names can change in a village or at the village line.  
 -Names/numbering can change at town line on through roads.

- 234 e911 addresses
- e911 drive
- TH cls 1 (village)
- TH cls 2
- TH cls 2 gravel
- TH cls 3
- TH cls 3 gravel
- TH cls 4 gravel
- VT forest hwy
- trail
- private
- VT route
- US route
- Interstate
- rail line

## E911 Road Names Sharon, Vermont September 25, 2007

State Plane Meters, NAD 83

for info & data  
[www.vcgi.org](http://www.vcgi.org)

For planning purposes only.  
 Not for regulatory interpretation.

**TWO RIVERS-OTTAUQUECHEE**  
 REGIONAL COMMISSION  
**GIS Service Center**

3117 Rose Hill  
 The King Farm  
 Woodstock, VT 05091  
 802-457-3188  
[www.trorc.org](http://www.trorc.org)