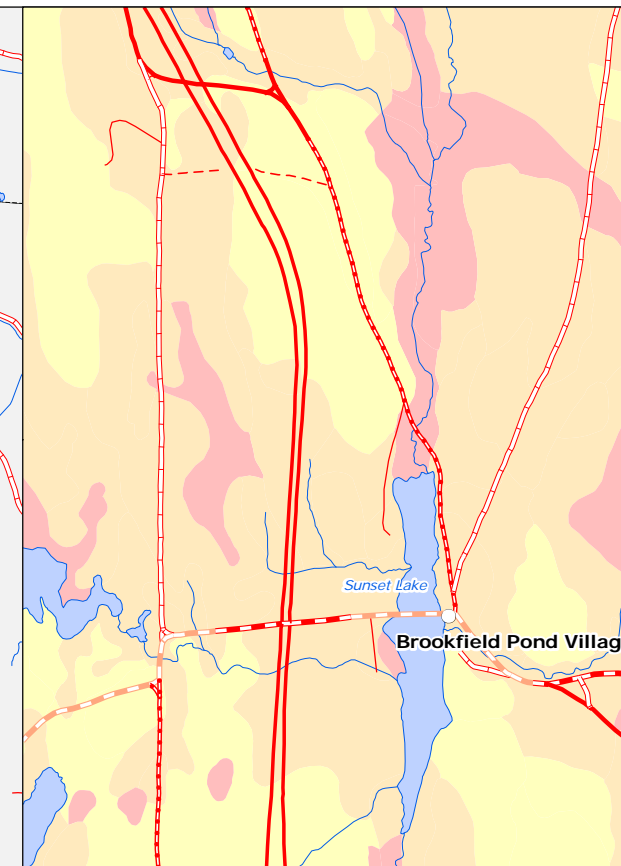
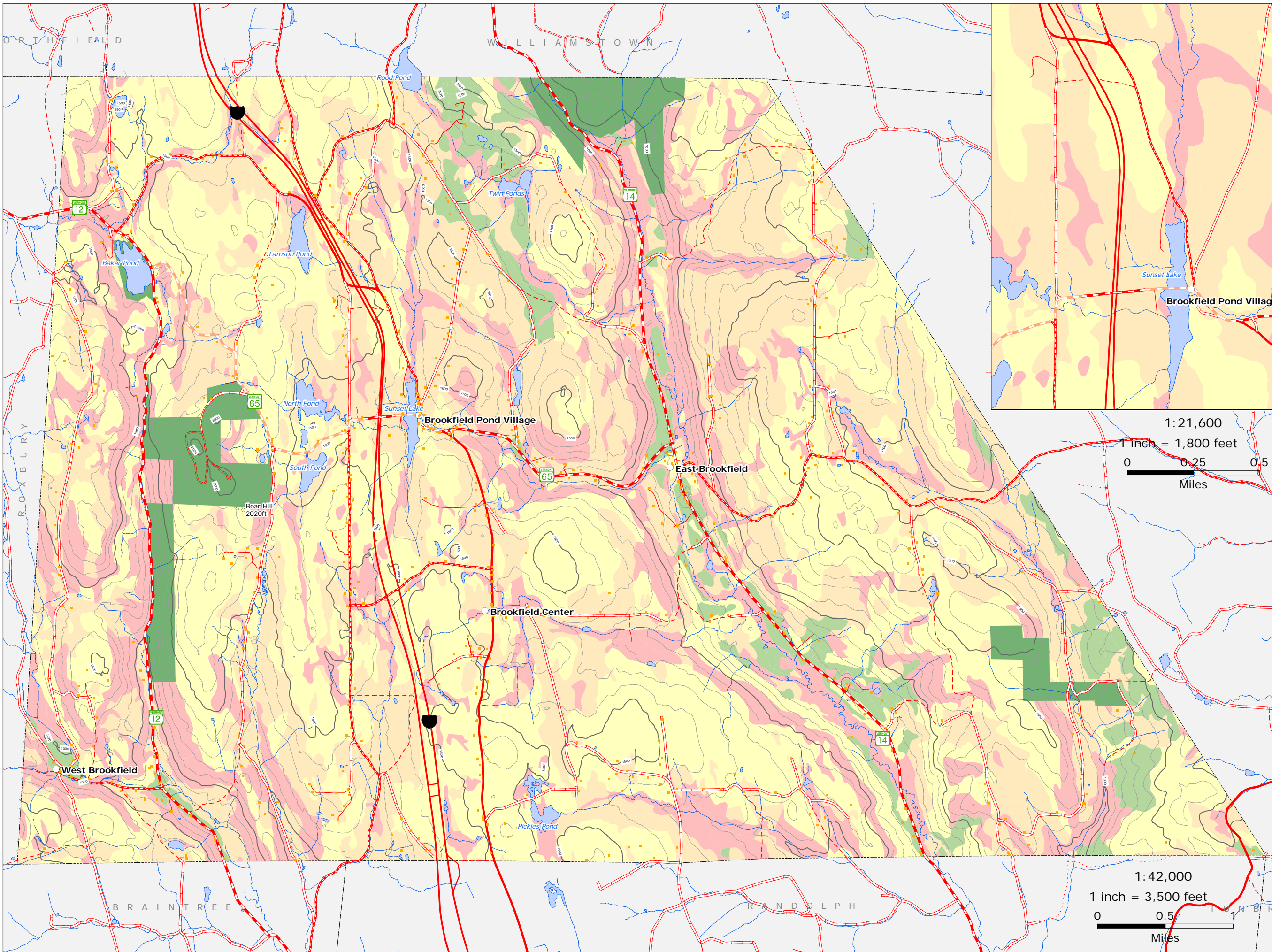


Soils Generalized Onsite Septic Suitability

Town Plan Map 9 of 9

Brookfield, Vermont

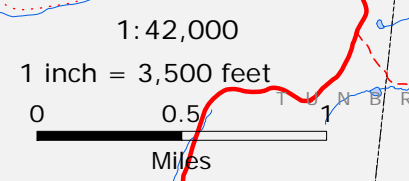
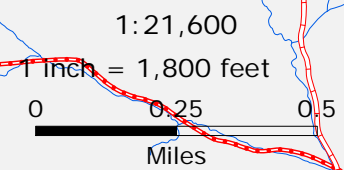
Adopted: Jan. 24, 2011



- VT route/TH cls 1
- TH cls 2
- TH cls 2 gravel
- TH cls 3
- TH cls 3 gravel
- TH cls 4 (not all passable)
- trail
- private
- US route
- US interstate
- VT forest hwy
- PUBLIC LANDS

SEPTIC SUITABILITY

- Well Suited**
This group is composed of coarse textured, sandy and gravelly glacial outwash soil map units with rapid to very rapid permeability in the substratum and well drained glacial till soil map units with a friable substratum with moderate permeability on slopes generally less than 20 percent. Some map units have slopes greater than 20 percent in some areas.
- Moderately Suited**
This group is composed of several distinct types of soil map units: 1) map units of soils with moderately slow to very slow permeability, 2) map unit complexes with moderate depth to bedrock, with one or more soil underlain by bedrock within 40 inches, 3) map units of soils in Group I that are on slopes entirely greater than 20 percent, 4) map units with a flooding limitation, and 5) map units of soils that have a seasonal high water tables at moderate depths, generally at a depth of one-and-a-half feet or deeper.
- Marginally Suited**
This group is composed of soil map units that have a greater degree of limitations than Group II. They may require more intensive on-site investigations to locate suitable areas or they may require more sophisticated designs to overcome the limitations. Soil map units with a shallow seasonal high water table may require seasonal on-site monitoring of the water table to determine if the site is suitable. Some areas of any of these units may not be suited for on-site waste disposal systems.
- Not Suited**
This group is composed of soil map units that are generally too wet, rocky, steep or otherwise unsuitable for use in on-site waste disposal systems.



State Plane Meters, NAD 83

GIS
for info & data
www.vcgi.org

For planning purposes only.
Not for regulatory interpretation.

TWO RIVERS-OTTAUQUECHEE
REGIONAL COMMISSION
GIS Service Center

3117 Rose Hill
The King Farm
Woodstock, VT 05091
802-457-3188
www.trorc.org