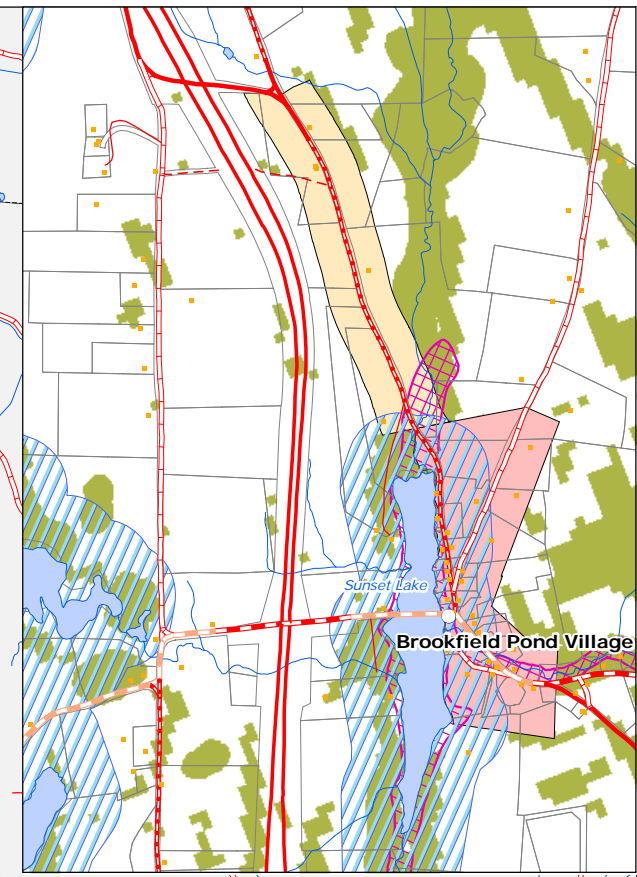
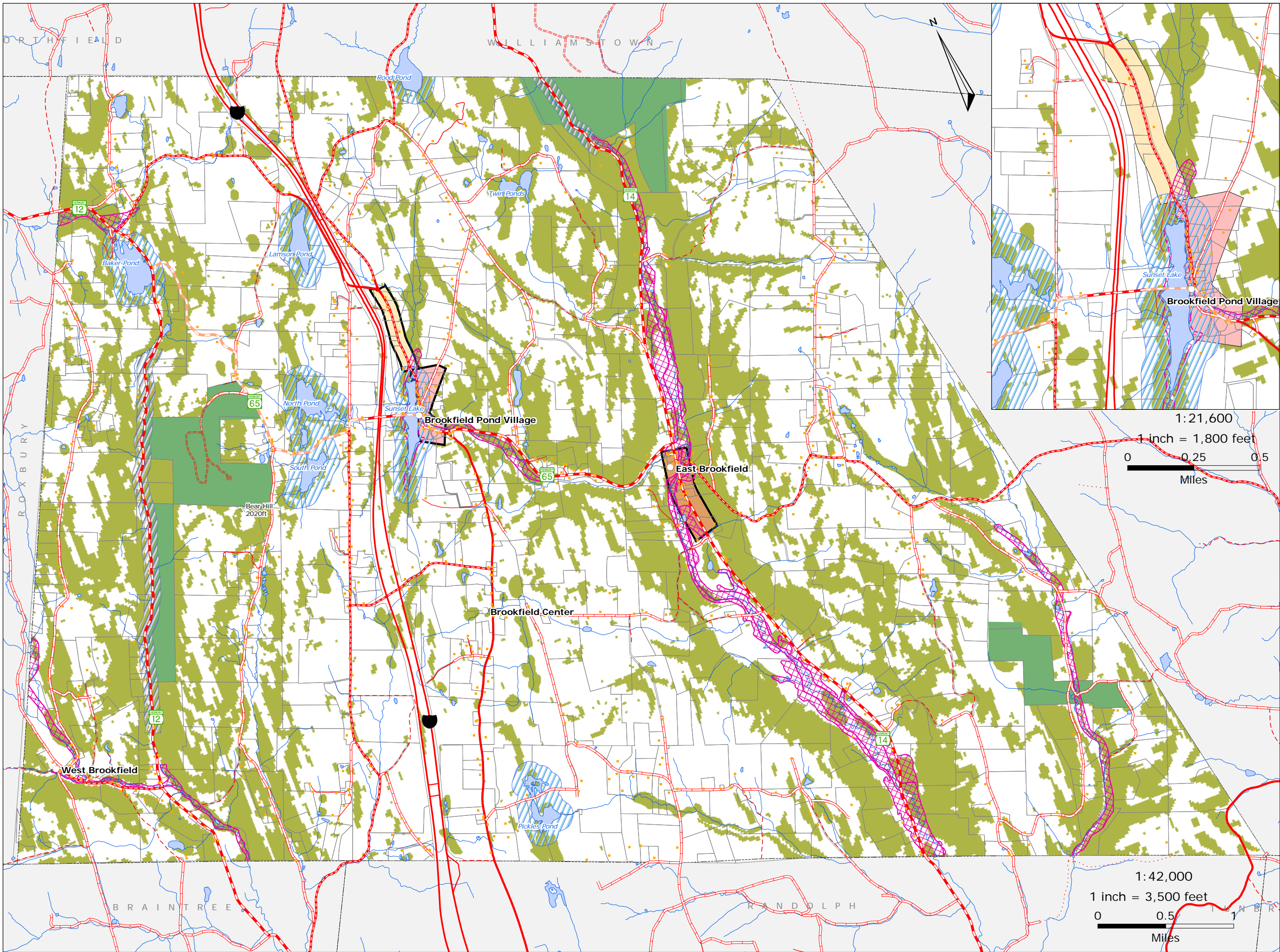


# Development Bylaw Districts

## Town Plan *Map 3 of 9*

### Brookfield, Vermont

Adopted: Jan. 24, 2011



- VT route/TH cls 1
- TH cls 2
- TH cls 2 gravel
- TH cls 3
- TH cls 3 gravel
- TH cls 4 (not all passable)
- trail
- private
- US route
- US interstate
- VT forest hwy
- tax parcel bounds

- EAST VILLAGE
- POND VILLAGE
- POND VILLAGE EXTENDED
- AGRICULTURAL/RESIDENTIAL
- CONSERVATION >25% slope & Wetlands
- PUBLIC LANDS

- OTHER DISTRICTS**
- Scenic Overlay 300' road cL buffer
  - Shoreland Area
  - FEMA floodplains

- Existing Pond Village District was created by referring to the written description in the revised bylaws.
- Extended Pond Village District was created by buffering the Stone road 300 feet on both sides.
- East Brookfield District was created by buffering Route 14, 500 ft on both sides.
- The Conservation District comprises steep slope > 25% and National Wetlands Inventory (NWI) areas buffered 75 feet from the boundary.
- Public Lands Districts were derived from 1:24000 scale data from the Vermont Agency of Natural Resources (ANR) state and municipal lands.
- Agricultural/Residential District includes areas derived from the 1979 orthophotos depicting land use/land cover areas.
- Scenic Protection Areas District includes the Brookfield Gulf Area and the Williamston Gulf Area by buffering Route 12 and Route 14 at designated areas by 300 feet on both sides of the roads.

1:21,600  
1 inch = 1,800 feet  
0 0.25 0.5  
Miles

1:42,000  
1 inch = 3,500 feet  
0 0.5 1  
Miles

State Plane Meters, NAD 83

for info & data  
[www.vcgi.org](http://www.vcgi.org)

For planning purposes only.  
Not for regulatory interpretation.

**TWO RIVERS-OTTAUQUECHEE**  
REGIONAL COMMISSION

**GIS Service Center**

3117 Rose Hill  
The King Farm  
Woodstock, VT 05091  
802-457-3188  
[www.trorc.org](http://www.trorc.org)