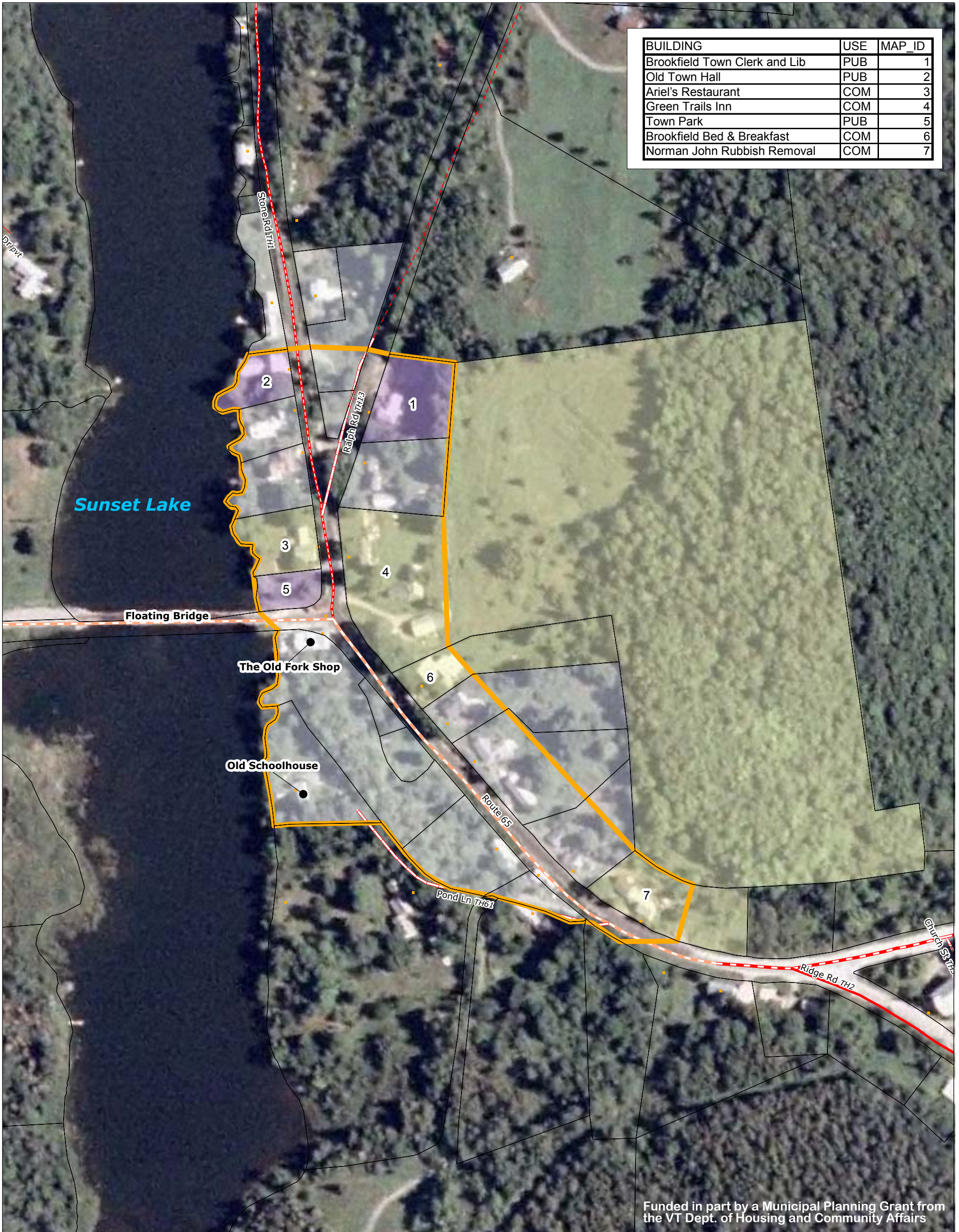


BUILDING	USE	MAP_ID
Brookfield Town Clerk and Lib	PUB	1
Old Town Hall	PUB	2
Ariel's Restaurant	COM	3
Green Trails Inn	COM	4
Town Park	PUB	5
Brookfield Bed & Breakfast	COM	6
Norman John Rubbish Removal	COM	7



Funded in part by a Municipal Planning Grant from the VT Dept. of Housing and Community Affairs

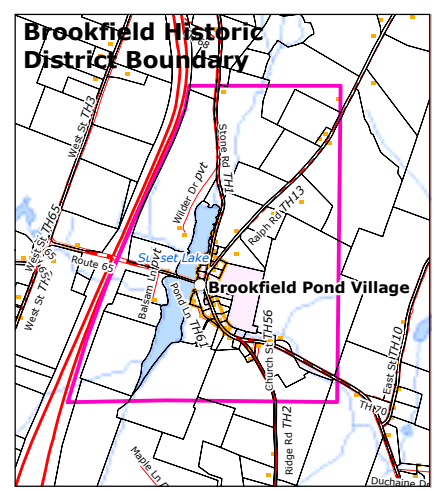
# Village Designation Map Brookfield, Vermont

Designated on May 23, 2005, by the Vermont Downtown Board.

- VT route/TH cls 1
- TH cls 2
- TH cls 2 gravel
- TH cls 3
- TH cls 3 gravel
- TH cls 4
- trail
- private
- US route
- US interstate
- VT forest hwy
- Commercial
- Multi-Family Dwelling
- Public/Civic
- Residential
- Village Designation Boundary

1:2,047  
1 inch equals 171 feet

POLITICAL BOUNDARIES: Town Parcel Boundaries, VCGI, 2003.  
ROADS: 1:5000 Digital Road Centerline Project, VAOT, 1991-1994 & E911 Board GPS Updates, 2003.  
STRUCTURES: E911 Board GPS Updates, 2003.  
SURFACE WATER: On-screen digitized from 1:5000 digital orthophotos using USGS 7 1/2' quadrangles and 1:20000 color infrared aerial photography as additional source material, VCGI for VHD-USGS, 2003.



State Plane Meters, NAD 83

**GIS**  
for info & data  
[www.vcgi.org](http://www.vcgi.org)

For planning purposes only.  
Not for regulatory interpretation.

---

**TWO RIVERS-OTTAUQUECHEE**  
REGIONAL COMMISSION

**GIS Service Center**

3117 Rose Hill  
The King Farm  
Woodstock, VT 05091  
802-457-3188

**[www.trorc.org](http://www.trorc.org)**

www.vcgi.org

www.trorc.org