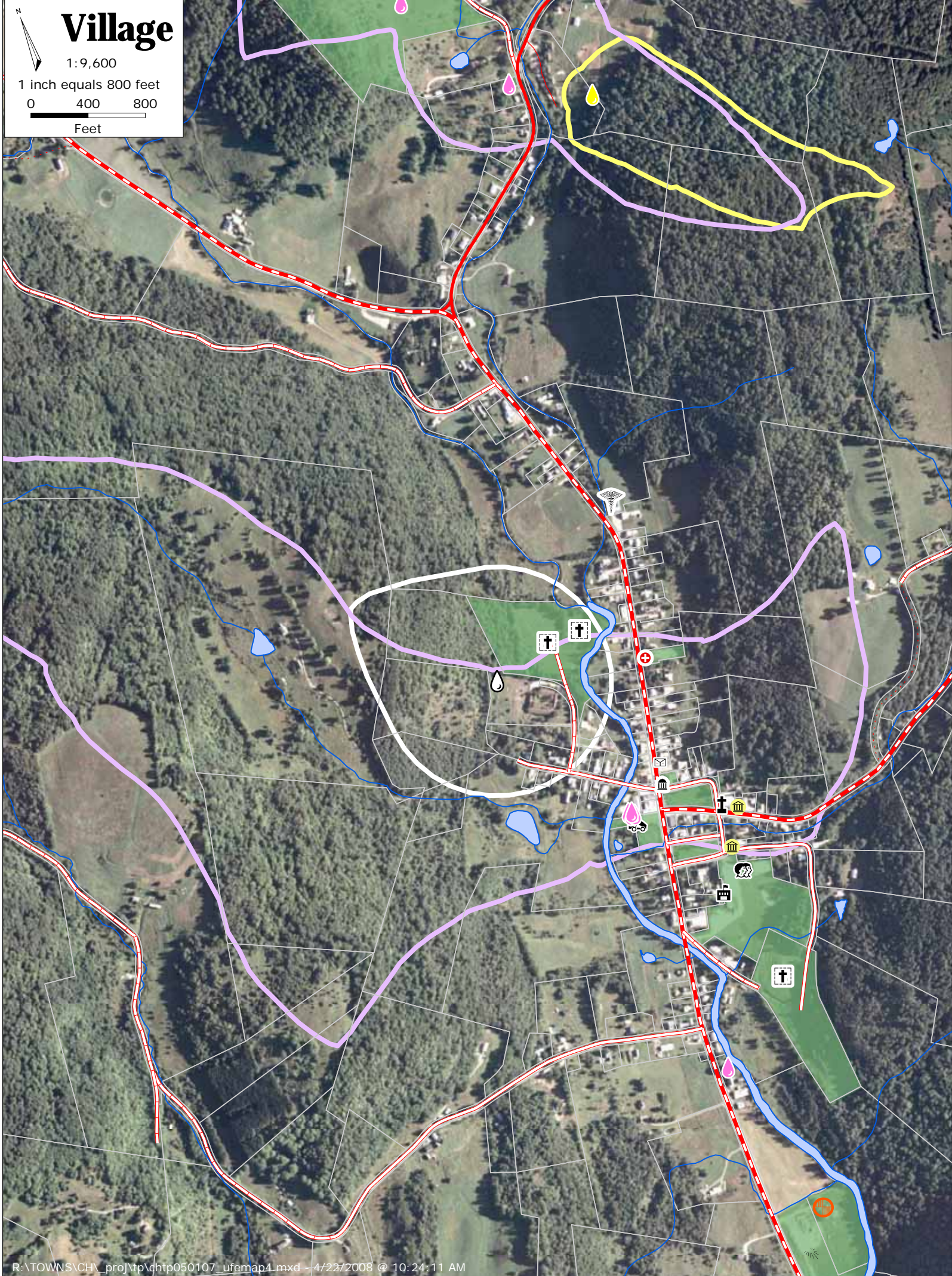


Village
 1:9,600
 1 inch equals 800 feet
 0 400 800
 Feet

**Utilities,
 Facilities
 & Education**
Town Plan
 Chelsea, Vermont
Map 4 of 6
April 15, 2008

Funded in part by a Municipal Planning Grant from the VT Dept. of Housing and Community Affairs



- Chelsea School
- Church
- County Court & Offices
- Firehouse
- Gym
- Cemeteries
- Post Office
- Rec. Field/Sand Pile
- Wastewater Treatment
- Water System (pink, black or yellow)
- Town Garage
- Town Hall/Library
- Source Protection Area (pink, white or yellow)
- Surface Water
- Tax Parcels
- Town Owned Lands

State Plane Meters, NAD 83

GIS
 for info & data
www.vcgi.org

For planning purposes only.
 Not for regulatory interpretation.

TWO RIVERS-OTTAUQUECHEE
 REGIONAL COMMISSION
GIS Service Center

3117 Rose Hill
 The King Farm
 Woodstock, VT 05091
 802-457-3188
www.trorc.org

R:\TOWNS\CH_proj\tp\chtp050107_ufemap4.mxd - 4/22/2008 @ 10:24:11 AM



Town
 1:72,000
 1 inch equals 6,000 feet
 0 0.5 1
 Miles

- Cemeteries, Public Lands
 & Source Protection Areas**
- e911 addresses
 - VT route/TH cls 1
 - TH cls 2
 - TH cls 2 gravel
 - TH cls 3
 - TH cls 3 gravel
 - TH cls 4
 - trail
 - private
 - US route
 - US interstate
 - VT forest hwy

W I L L I A M S T O W N W A S H I N G T O N R A N D O L P H T U N B R I D G E S T R A F F O R D