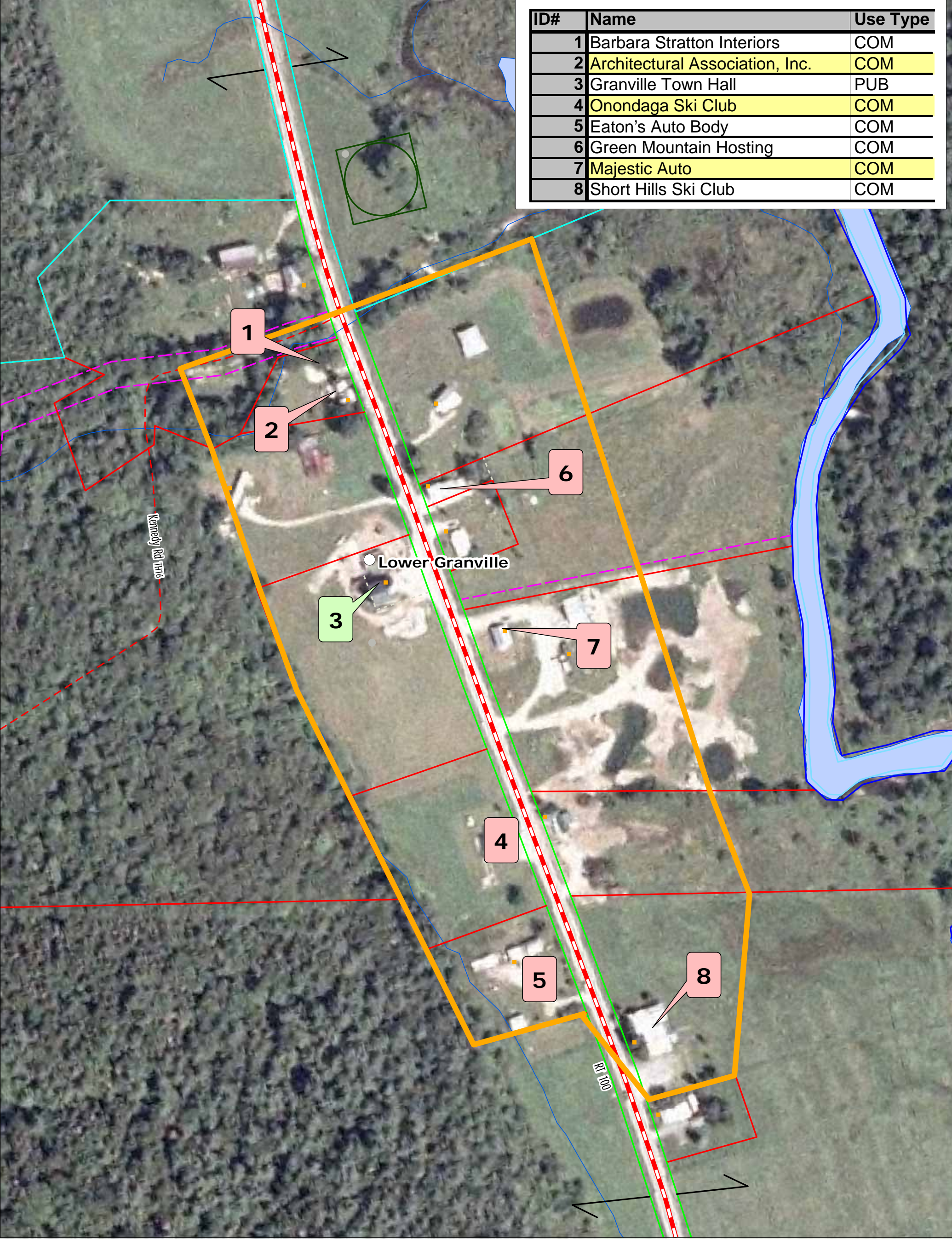
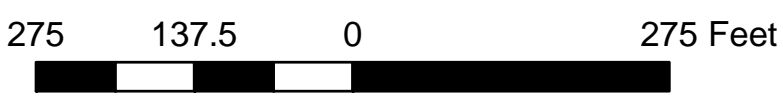


ID#	Name	Use Type
1	Barbara Stratton Interiors	COM
2	Architectural Association, Inc.	COM
3	Granville Town Hall	PUB
4	Onondaga Ski Club	COM
5	Eaton's Auto Body	COM
6	Green Mountain Hosting	COM
7	Majestic Auto	COM
8	Short Hills Ski Club	COM



Village Designation Lower Granville, Vermont

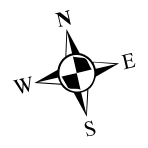


Designated on July 27, 2009
by the Vermont Downtown Board

1:2,001
1 inch = 167 feet

- VT route/TH cls 1
- TH cls 2
- TH cls 2 gravel
- TH cls 3
- TH cls 3 gravel
- TH cls 4
- trail
- private
- US route
- US interstate
- VT forest hwy
- Public/Municipal
- Commercial
- Multi-Unit Rental
- Village Designation Boundary

POLITICAL BOUNDARIES: Town Parcel Boundaries, VCGI, 2003.
ROADS: 1:5000 Digital Road Centerline Project, VAOT, 1991-1994 & E911 Board GPS Updates, 2003.
STRUCTURES: E911 Board GPS Updates, 2003.
SURFACE WATER: On-screen digitized from 1:5000 digital orthophotos using USGS 7 1/2' quadrangles and 1:20000 color infrared aerial photography as additional source material, VCGI for VHD-USGS, 2003.
TOWN PARCEL DATA: Russell Graphics, 2008



State Plane Meters, NAD 83

GIS
for info & data
www.vcgi.org

For planning purposes only.
Not for regulatory interpretation.

TWO RIVERS-OTTAUQUECHEE
REGIONAL COMMISSION
GIS Service Center

3117 Rose Hill
The King Farm
Woodstock, VT 05091
802-457-3188
www.trorc.org