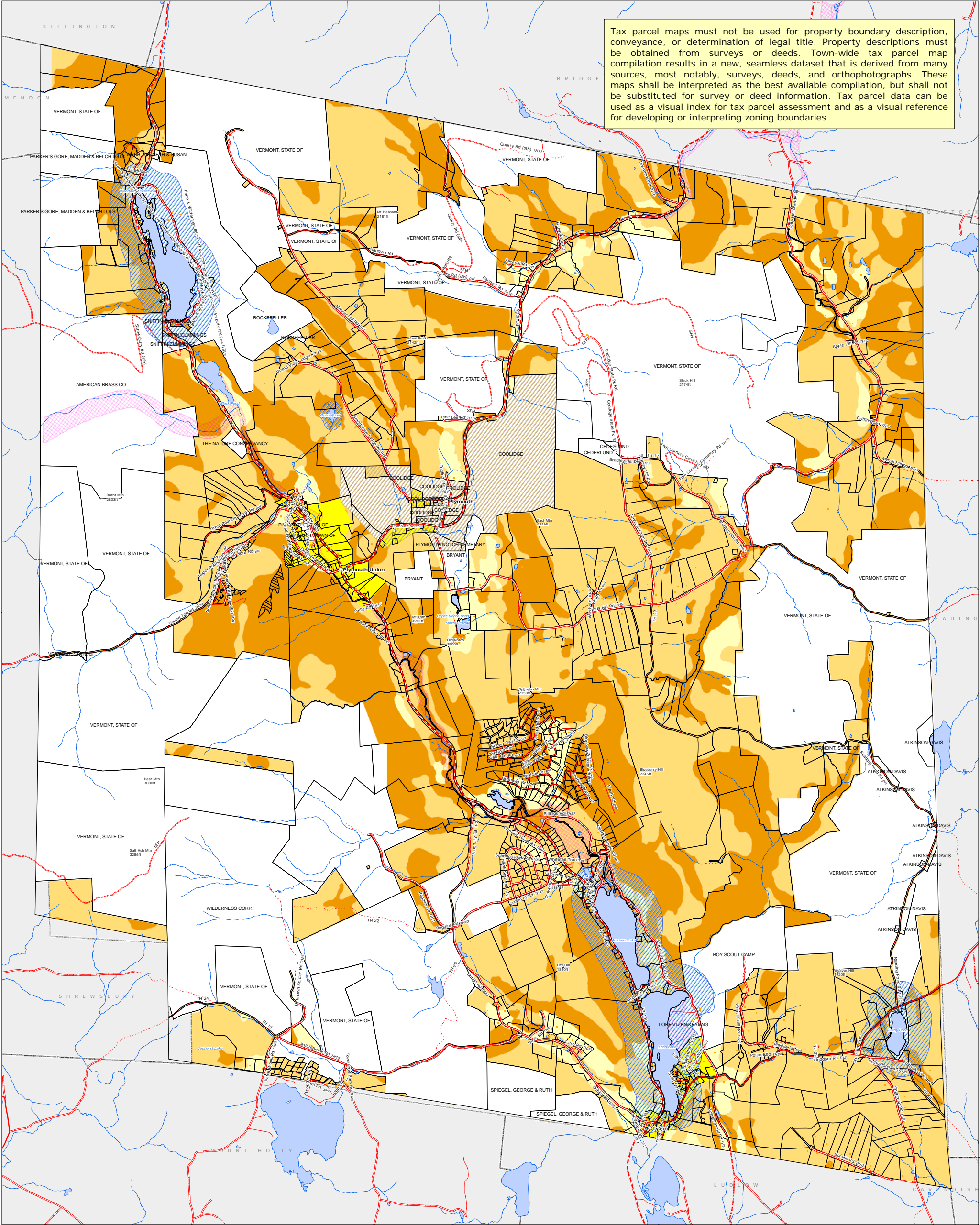


Tax parcel maps must not be used for property boundary description, conveyance, or determination of legal title. Property descriptions must be obtained from surveys or deeds. Town-wide tax parcel map compilation results in a new, seamless dataset that is derived from many sources, most notably, surveys, deeds, and orthophotographs. These maps shall be interpreted as the best available compilation, but shall not be substituted for survey or deed information. Tax parcel data can be used as a visual index for tax parcel assessment and as a visual reference for developing or interpreting zoning boundaries.



Zoning Districts Plymouth, Vermont

- | | | |
|-------------------|----------------------|---------------|
| BASE ZONES | OVERLAY ZONES | |
| RD10 | CHH | surface water |
| RD5 | FH | public lands |
| RD2 | SL | |
| VH | | |

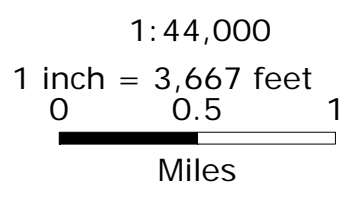
State Plane Meters, NAD 83

GIS
for info & data
www.vcgi.org

For planning purposes only.
Not for regulatory interpretation.

POLITICAL BOUNDARIES: Town Parcel Boundaries, VCGI, 2003.
ROADS: 1:5000 Digital Road Centerline Project, VAOT, 1991-1994.
STRUCTURES: E911 Board GPS Updates, 2003.
SURFACE WATER: On-screen digitized from 1:5000 digital orthophotos using USGS 7 1/2' quadrangles and 1:20000 color infrared aerial photography as additional source material, VCGI for VHD-USGS, 2003.

Adopted: February 7, 2005
Re-Adopted: January 29, 2007
Interim: October 22, 2007
Extended: October 19, 2009 for one year



**TWO RIVERS-OTTAUQUECHEE
REGIONAL COMMISSION**
GIS Service Center
3117 Rose Hill
The King Farm
Woodstock, VT 05091
802-457-3188
www.trorc.org