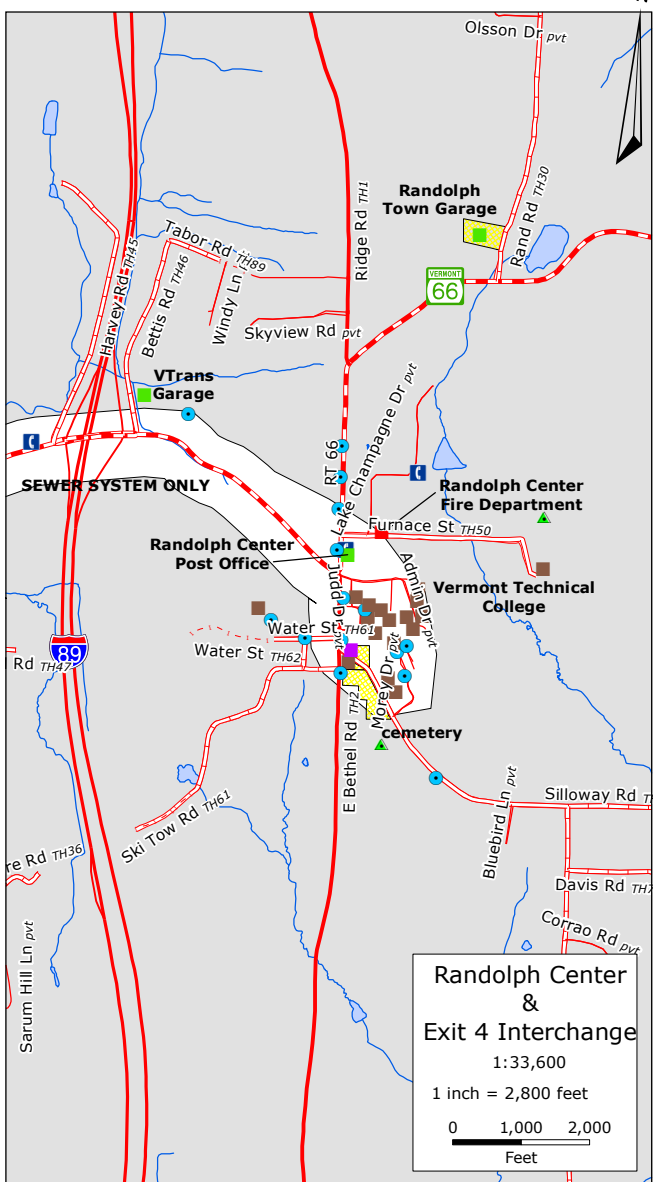


**Randolph Village**

1:18,000

1 inch = 1,500 feet

0 1,000 2,000  
Feet

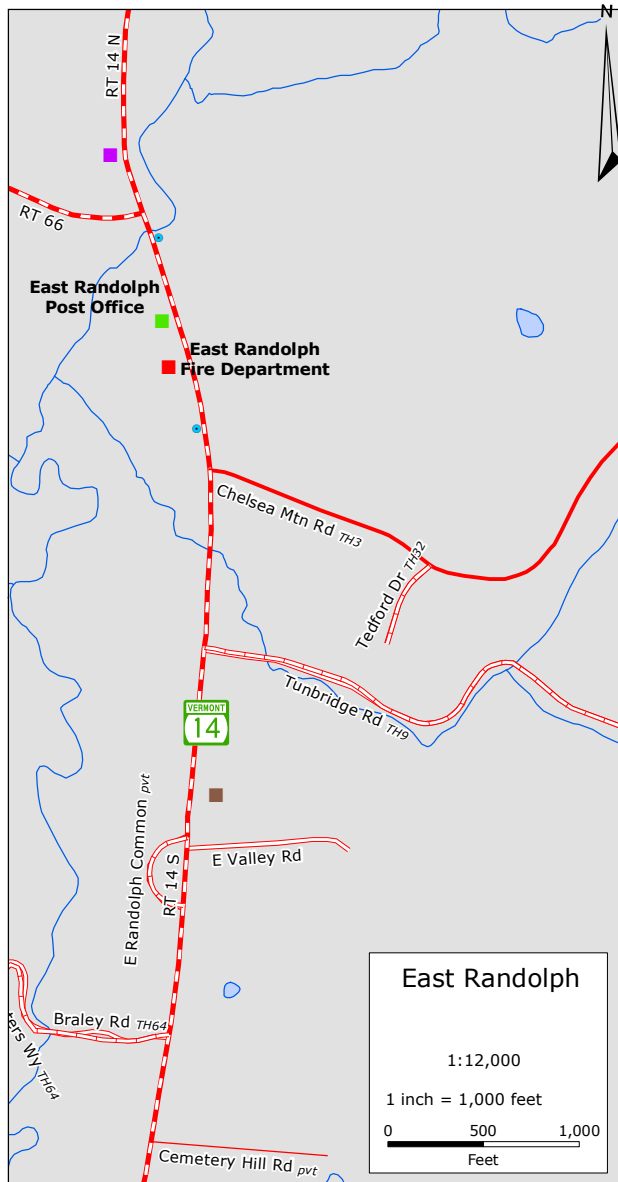


**Randolph Center & Exit 4 Interchange**

1:33,600

1 inch = 2,800 feet

0 1,000 2,000  
Feet



**East Randolph**

1:12,000

1 inch = 1,000 feet

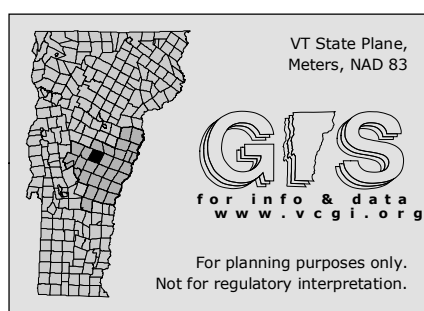
0 500 1,000  
Feet

**Utilities, Facilities and Education**  
Town of Randolph, Vermont  
**Map 4 of 7**  
**Town Plan**  
**Adopted: 02/16/10**

- town forest
- important parcels
- water & sewer systems
- Public Gathering Place (Outdoors)
- Fire Station
- Police Station
- Cultural
- Educational
- Health Care
- Government/Town
- Church
- Public Telephone
- Fire Hydrant/Pond
- Cemetery

- TH cls 1 (village VT rt)
- TH cls 2
- TH cls 2 gravel
- TH cls 3
- TH cls 3 gravel
- TH cls 4 gravel
- TH cls 4 primitive
- TH cls 4 impassable
- VT forest hwy
- trail
- private
- VT route
- US route
- US interstate

POLITICAL BOUNDARIES: 1:24000 USGS Quadrangles, VCGI, 1991.  
ROADS: 1:5000 Digital Road Centerline Project, VAOT, 1991-1994.  
STRUCTURES: E911 Project, microDATA GPS data, 1996-1998.  
SURFACE WATER: On-screen digitized from 1:5000 digital orthophotos using USGS 7 1/2' quadrangles and 1:20000 color infrared aerial photography as additional source material, VCGI for VHD-USGS, 2001.



**TWO RIVERS-OTTAUQUECHEE REGIONAL COMMISSION**

**GIS Service Center**  
*Municipal Planning*

3117 Rose Hill  
The King Farm  
Woodstock, VT 05091  
802-457-3188  
info@trorc.org

**www.trorc.org**