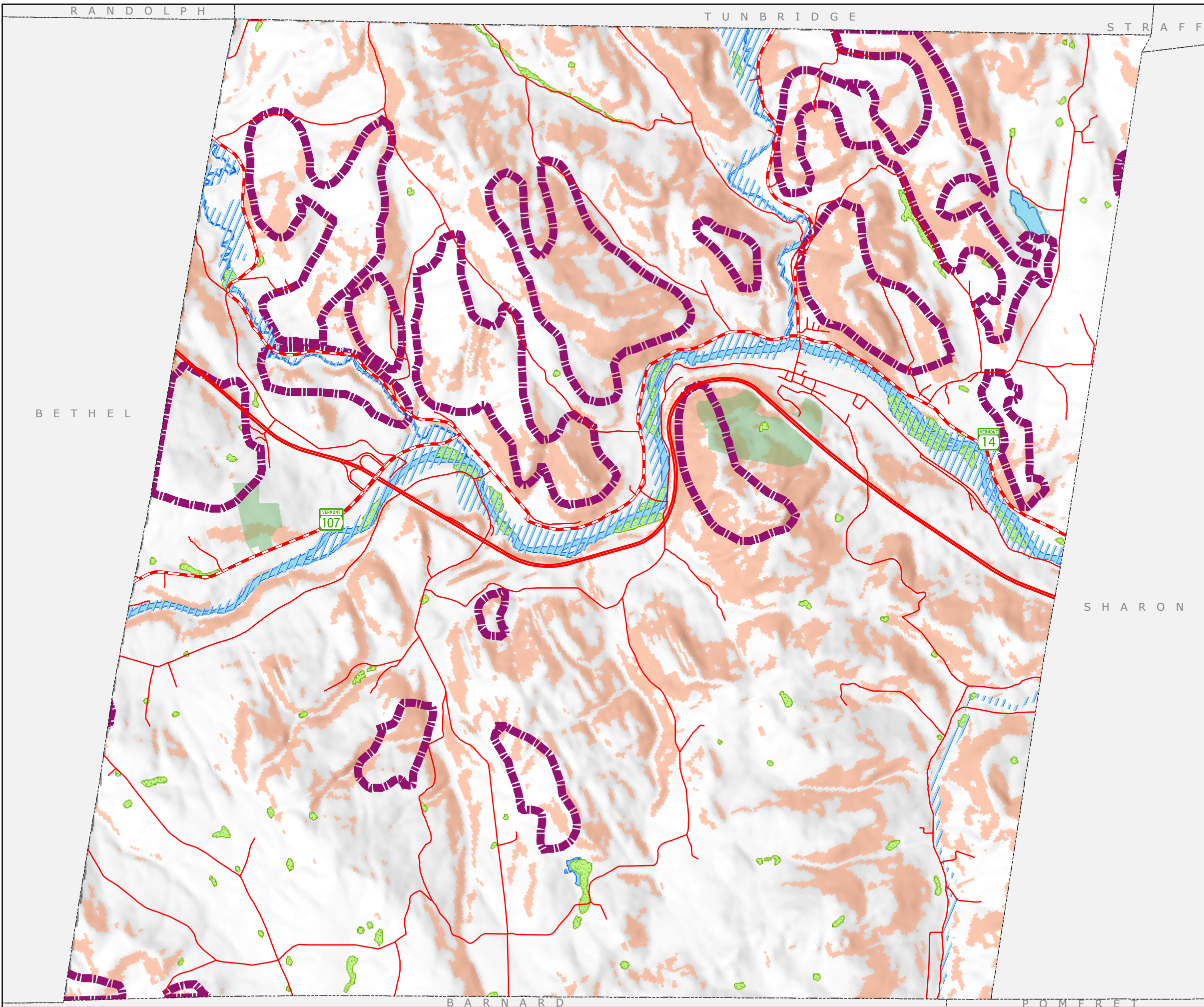





# Natural Resources

## Town Plan

### Royalton, Vermont

Map 3 of 5  
Adopted: 3/2/10



-  deer wintering areas
-  prime ag soils
-  statewide ag soils
-  > 25% slope
-  flood plain 100 year (FEMA FIRM)
-  wetlands
-  conserved lands
-  surface water

Funded in part by a Municipal Planning Grant from the VT Dept. of Housing and Community Affairs

AG. SOILS: Optically scanned from 1:20000 USDA-NRCS soil maps. Soils are defined as of PRIME (national), STATEWIDE, or LOCAL significance for farming. These soils may include HYDRIC soils and may have additional, local wetness, slope, and depth-to-bedrock limitations that may qualify the soil units as agricultural.

DEER WINTERING HABITAT: Sources included state highway maps, topographic maps, overlays to 1977 infrared photos, written material and verbal information from DFW biologists. Compiled to 1:24000 & 1:25000. VANR-DFW, 1994.

PUBLIC CONSERVATION LANDS: Vermont Conserved Lands Database Project, 1:5000, UVM-SAL, TRORC, 2000.

FLOOD PLAIN: Digitized from FEMA Flood Insurance Rate Maps, TRORC. Floodplains for planning purposes only. Refer to the VANR-DEC, Water Quality Division, River Corridor Management Section, Floodplain Engineer for official determinations. (802) 241-3770

SLOPE: USGS 1:24000 NED-DEM, 30m cell averages.

VSWI WETLANDS: These data include both NWI and VANR Class II wetlands. USFWS used 1:80000 color infrared aerial photos (flown between 1975 and 1978), USGS topo sheets and other mapped and text data to interpret locations. Two thirds were hand digitized from 1:24000 NWI Mylars. Remainder were scanned from 1:24000 or 1:25000 Mylars. Mylars were created by transferring wetland polygon boundaries from 1:25000 NWI Mylars to 1:24000 base maps. 3 acre min. mapping unit includes a 50' buffer.

VANR updated as of 1996, 2005. Refer to VANR-DEC, Water Quality Division, Wetlands Section, Wetlands Coordinator for official determinations. (802) 241-3770

POLITICAL BOUNDARIES: Town Parcel Boundaries, VCGI, 2003.

ROADS: 1:5000 Digital Road Centerline Project, VAOT, 1991-1994.

STRUCTURES: E911 Board GPS Updates, 2003.

SURFACE WATER: On-screen digitized from 1:5000 digital orthophotos using USGS 7 1/2' quadrangles and 1:20000 color infrared aerial photography as additional source material, VCGI for VHD-USGS, 2003.

VT State Plane,  
Meters, NAD 83

**GIS**  
for info & data  
[www.vcgi.org](http://www.vcgi.org)

For planning purposes only.  
Not for regulatory interpretation.

**Two Rivers-Ottauquechee**  
REGIONAL COMMISSION  
**GIS Service Center**  
Municipal Planning

3117 Rose Hill  
The King Farm  
Woodstock, VT 05091  
802-457-3188  
info@trorc.org  
**www.trorc.org**