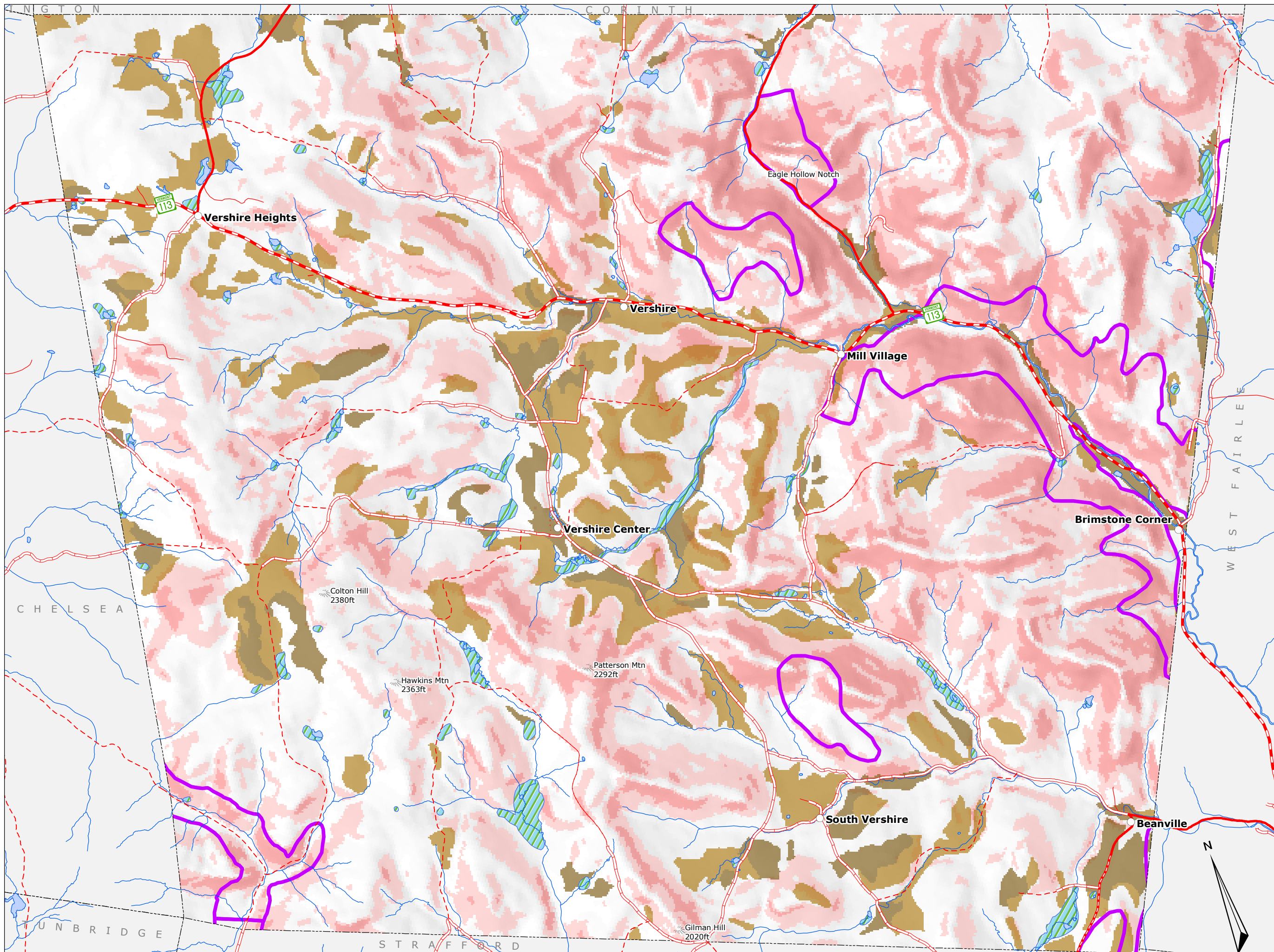


Vershire Town Plan Natural Resources

Vershire, Vermont
Adopted November 7, 2006
Map 3 of 5



- 0 - 19 % Slopes
- 20 - 29 % Slopes
- 30 + % Slopes
- Prime Ag Soils
- Statewide Ag Soils
- Deer Wintering Areas
- Wetlands
- Endangered Species

1 inch equals 2,829 feet
1:33,942

0 0.5 1
Miles

POLITICAL BOUNDARIES: Town Parcel Boundaries, VCGI, 2003.
ROADS: 1:5000 Digital Road Centerline Project, VAOT, 1991-1994 & E911 Board GPS Updates, 2003.
SURFACE WATER: On-screen digitized from 1:5000 digital orthophotos using USGS 7 1/2' quadrangles and 1:20000 color infrared aerial photography as additional source material, VCGI for VHD-USGS, 2003.
VSWI WETLANDS: These data include both NWI and VANR Class II wetlands. USFWS used 1:80000 color infrared aerial photos (flown between 1975 and 1978), USGS topo sheets and other mapped and text data to interpret locations. Two thirds were hand digitized from 1:24000 NWI Mylars. Remainder were scanned from 1:24000 or 1:25000 Mylars. Mylars were created by transferring wetland polygon boundaries from 1:25000 NWI Mylars to 1:24000 base maps. 3 acre min. mapping unit includes a 50' buffer. VANR updated as of 1996, 2005. Refer to VANR-DEC, Water Quality Division, Wetlands Section, Wetlands Coordinator for official determinations. (802) 241-3770
SLOPE: USGS 1:24000 NED-DEM, 30m cell averages.
Deer Wintering Habitat: Sources included state highway maps, topographic maps, overlays to 1977 infrared photos, written material and verbal information from DFW biologists. Compiled to 1:24000 & 1:25000. VANR-DFW, 1994.
Rare, Threatened, & Endangered Species and Significant Communities: Site visits were used to identify point locations, but some were based on literature and specimen data. Points are usually within 200m of community or site. The communities or habitats may vary in size. Nongame & Natural Heritage Program, VANR-DFW, 1992. Point radius is 200m.
AG. SOILS: Optically scanned from 1:20000 USDA-NRCS soil maps Soils are defined as of PRIME (national), STATEWIDE, or LOCAL significance for farming. These soils may include HYDRIC soils and may have additional, local wetness, slope, and depth-to-bedrock limitations that may qualify the soil units as agricultural.

State Plane Meters, NAD 83

GIS
for info & data
www.vcgi.org

For planning purposes only.
Not for regulatory interpretation.

TWO RIVERS-OTTAUQUECHEE
REGIONAL COMMISSION

GIS Service Center
3117 Rose Hill
The King Farm
Woodstock, VT 05091
802-457-3188
www.trorc.org