

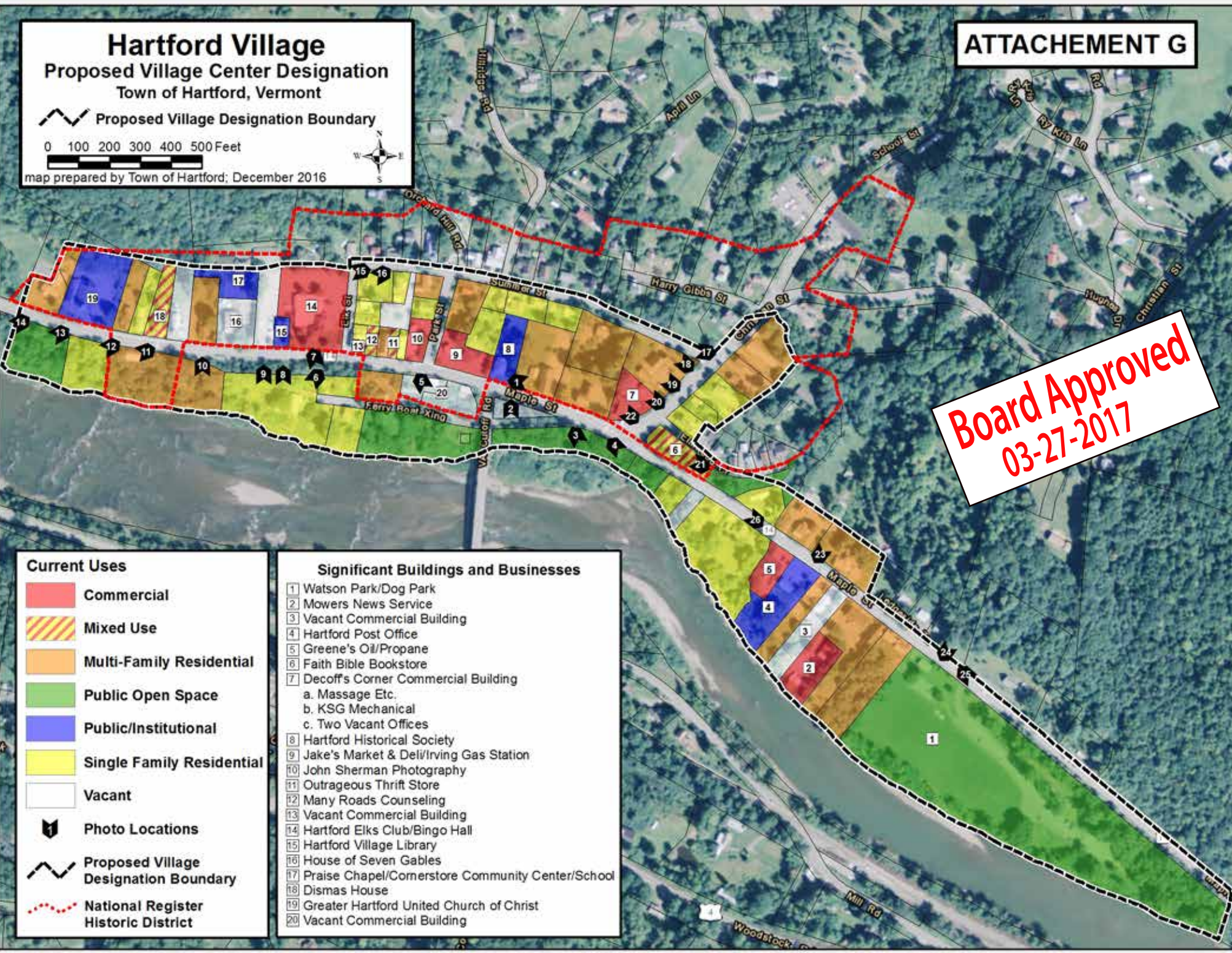
**Hartford Village**  
**Proposed Village Center Designation**  
 Town of Hartford, Vermont

 Proposed Village Designation Boundary

0 100 200 300 400 500 Feet



map prepared by Town of Hartford; December 2016



**Board Approved**  
**03-27-2017**

- Current Uses**
-  Commercial
  -  Mixed Use
  -  Multi-Family Residential
  -  Public Open Space
  -  Public/Institutional
  -  Single Family Residential
  -  Vacant
  -  Photo Locations
  -  Proposed Village Designation Boundary
  -  National Register Historic District

- Significant Buildings and Businesses**
- 1 Watson Park/Dog Park
  - 2 Mowers News Service
  - 3 Vacant Commercial Building
  - 4 Hartford Post Office
  - 5 Greene's Oil/Propane
  - 6 Faith Bible Bookstore
  - 7 Decoff's Corner Commercial Building
    - a. Massage Etc.
    - b. KSG Mechanical
    - c. Two Vacant Offices
  - 8 Hartford Historical Society
  - 9 Jake's Market & Deli/Irving Gas Station
  - 10 John Sherman Photography
  - 11 Outrageous Thrift Store
  - 12 Many Roads Counseling
  - 13 Vacant Commercial Building
  - 14 Hartford Elks Club/Bingo Hall
  - 15 Hartford Village Library
  - 16 House of Seven Gables
  - 17 Praise Chapel/Cornerstore Community Center/School
  - 18 Dismas House
  - 19 Greater Hartford United Church of Christ
  - 20 Vacant Commercial Building