

THETFORD, VERMONT, 2020 TOWN PLAN — MAP APPENDIX

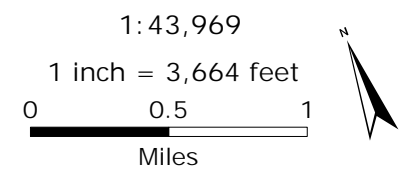
Adopted September 11, 2020.

CONTENTS

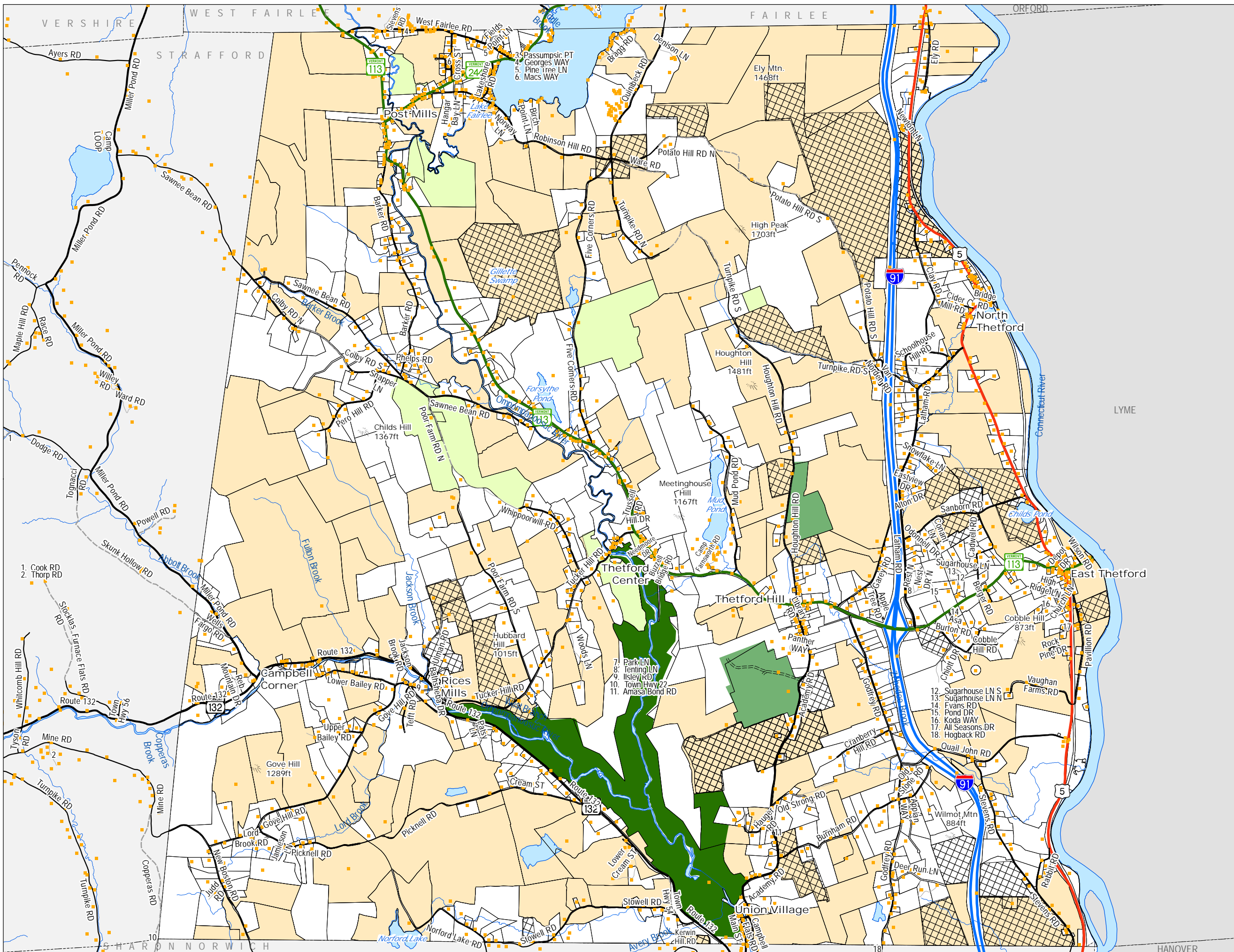
1. Current Land Use
 2. Current and Proposed Transportation
 3. Current and Proposed Utilities, Facilities, & Education
 4. Water & Slope
 5. Proposed Future Land Use
 6. Natural Resources
 7. Existing Energy Generation
 8. Solar Energy Potential
 9. Wind Energy Potential
 10. Working Forest Resources
 11. Wildlife, Plant, and Natural Community Resources
 12. Recreation Resources
 13. Forest Blocks and Connectivity Resources
 14. Farmland Resources
 15. Surface Water, Wetland, and Riparian Resources
-

Current Land Use Map Thetford, Vermont Town Plan 2020

Adopted 9/11/2020



- Interstate Highway
- US Highway
- State Highway
- Town Highway Class 2
- Town Highway Class 3
- Town Highway Class 4
- Private Road
- State Forest Highway
- 911 structure
- Federal Lands
- State Lands
- Town Lands
- Private Conserved Lands
- Current Use



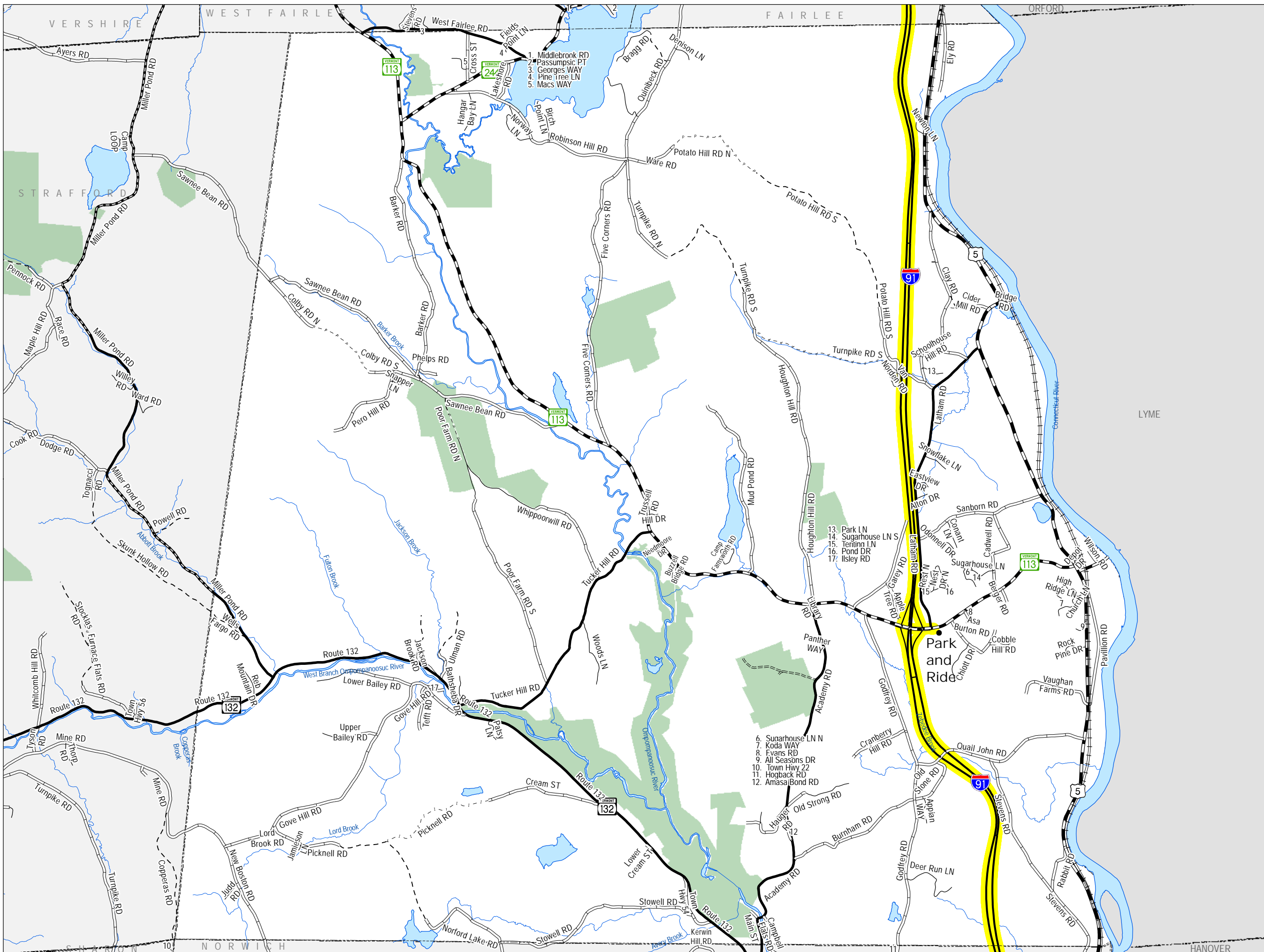
For Planning purposes only.
Not for regulatory interpretation.

Current and Proposed Transportation Map Thetford, Vermont Town Plan 2020

Adopted 9/11/2020

1:43,969
1 inch = 3,664 feet
0 0.5 1
Miles

- VT route/TH cls 1
- TH cls 2
- TH cls 2 gravel
- TH cls 3
- TH cls 3 gravel
- TH cls 4
- trail
- private
- US route
- US interstate
- VT forest hwy
- RR
- Stagecoach 91 Service
- Public Lands



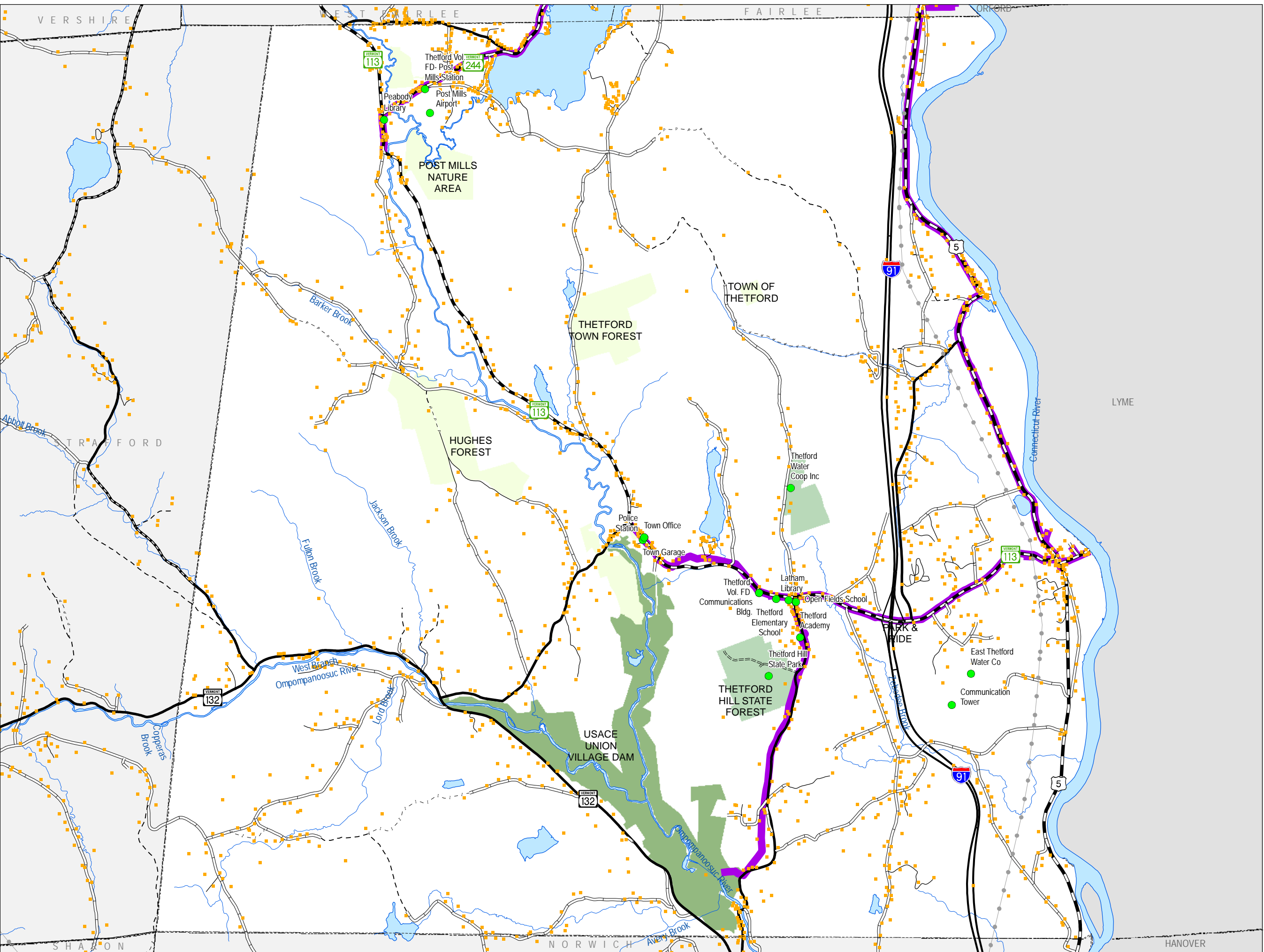
For Planning purposes only.
Not for regulatory interpretation.

Current and Proposed Utilities, Facilities & Education Map

Thetford, Vermont

Town Plan 2020

Adopted 9/11/2020



- VT route/TH cls 1
- TH cls 2
- TH cls 2 gravel
- TH cls 3
- TH cls 3 gravel
- TH cls 4
- trail
- private
- US route
- US interstate
- VT forest hwy
- 911 structure
- Facilities
- 3 Phase Line
- Transmission Line

- Federal Lands
- State Lands
- Town Lands

1:43,994
 1 inch = 3,666 feet

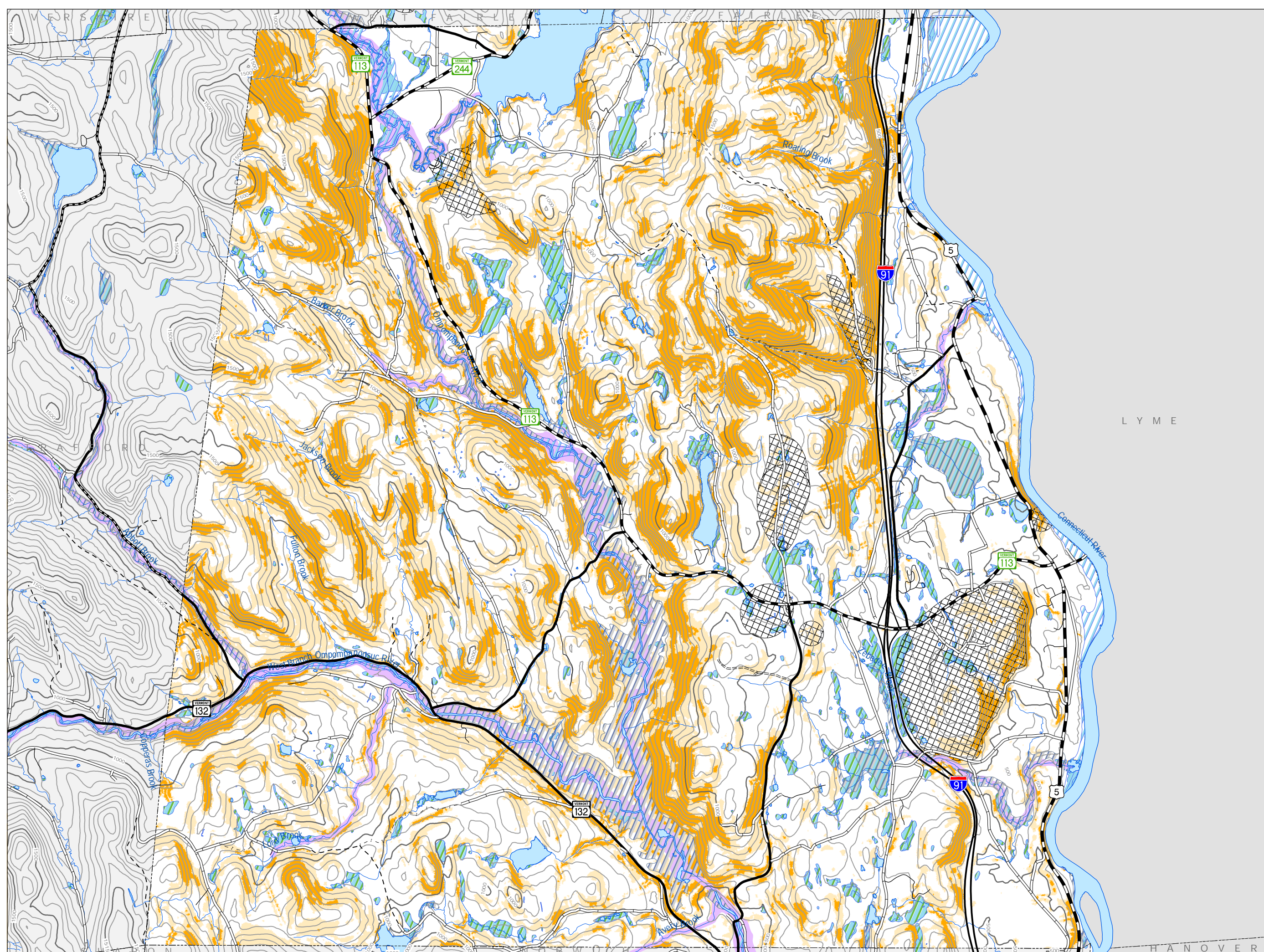
 Miles



For Planning purposes only.
 Not for regulatory interpretation.

Water & Slope Thetford, Vermont Town Plan 2020

Adopted 9/11/2020

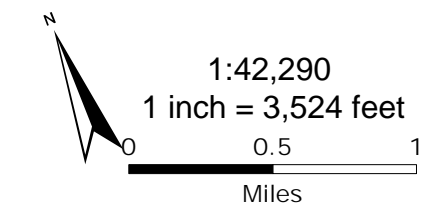


- VT route/TH cls 1
- TH cls 2
- TH cls 2 gravel
- TH cls 3
- TH cls 3 gravel
- TH cls 4
- trail
- private
- US route
- US interstate
- VT forest hwy

- Wetlands
- WellHead Protection Areas
- SPECIAL FLOOD HAZARD AREA
- VT RIVER CORRIDORS

- SLOPE**
- 0 - 15 %
 - 15 - 25 % Steep
 - > 25 % Very Steep

River Corridor and FEMA NFIP maps are available for Vermont here:
<http://tinyurl.com/floodreadyatlas>

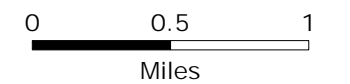


Proposed Future Land Use Map Thetford, Vermont Town Plan 2020

Adopted 9/11/2020

1: 43,969

1 inch = 3,664 feet



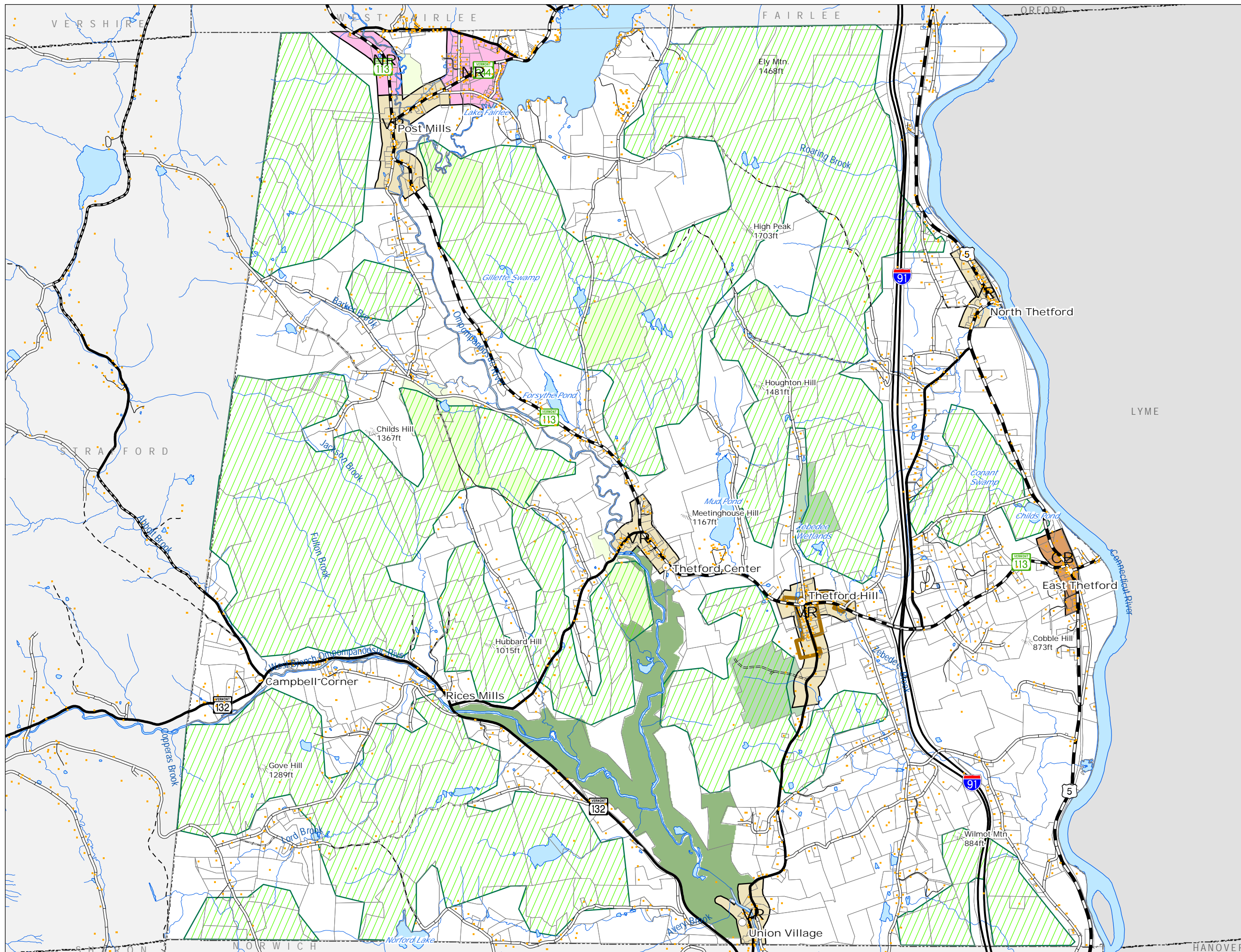
- VT route/TH cls 1
- TH cls 2
- TH cls 2 gravel
- TH cls 3
- TH cls 3 gravel
- TH cls 4
- trail
- private
- US route
- US interstate
- VT forest hwy
- 911 structure

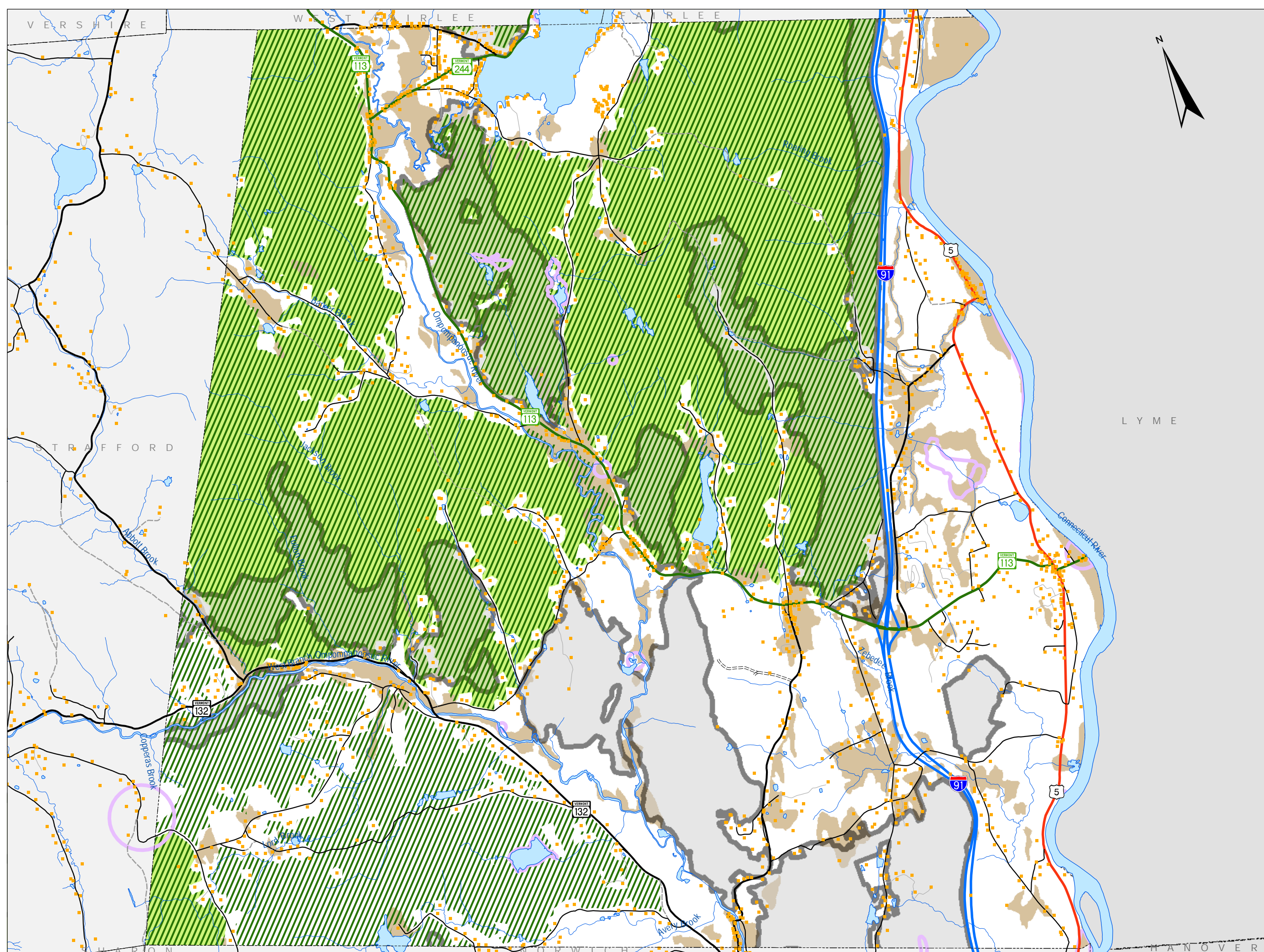
LAND USE AREAS

- Neighborhood Residential NR
- Village Residential VR
- Community Business CB
- Rural
- Thetford Hill Historic Overlay
- Forest Block Overlay

OTHER AREAS

- Federal Lands
- State Lands
- Town Lands





Natural Resources Thetford, Vermont Town Plan 2020

Adopted 9/11/2020

- Interstate Highway
- US Highway
- State Highway

- Town Highway Class 2
- Town Highway Class 3
- - - Town Highway Class 4
- Private Road
- = = = State Forest Highway

- Natural Communities
- Deer Wintering Areas
- NRCS Prime Ag.

- VT Conservation Design**
- Highest Priority Interior Forest Blocks
- Highest Priority Connector Forest Blocks

1:42,290
1 inch = 3,524 feet
0 0.5 1
Miles



For Planning purposes only. Not for regulatory interpretation.

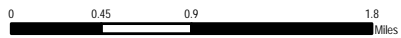
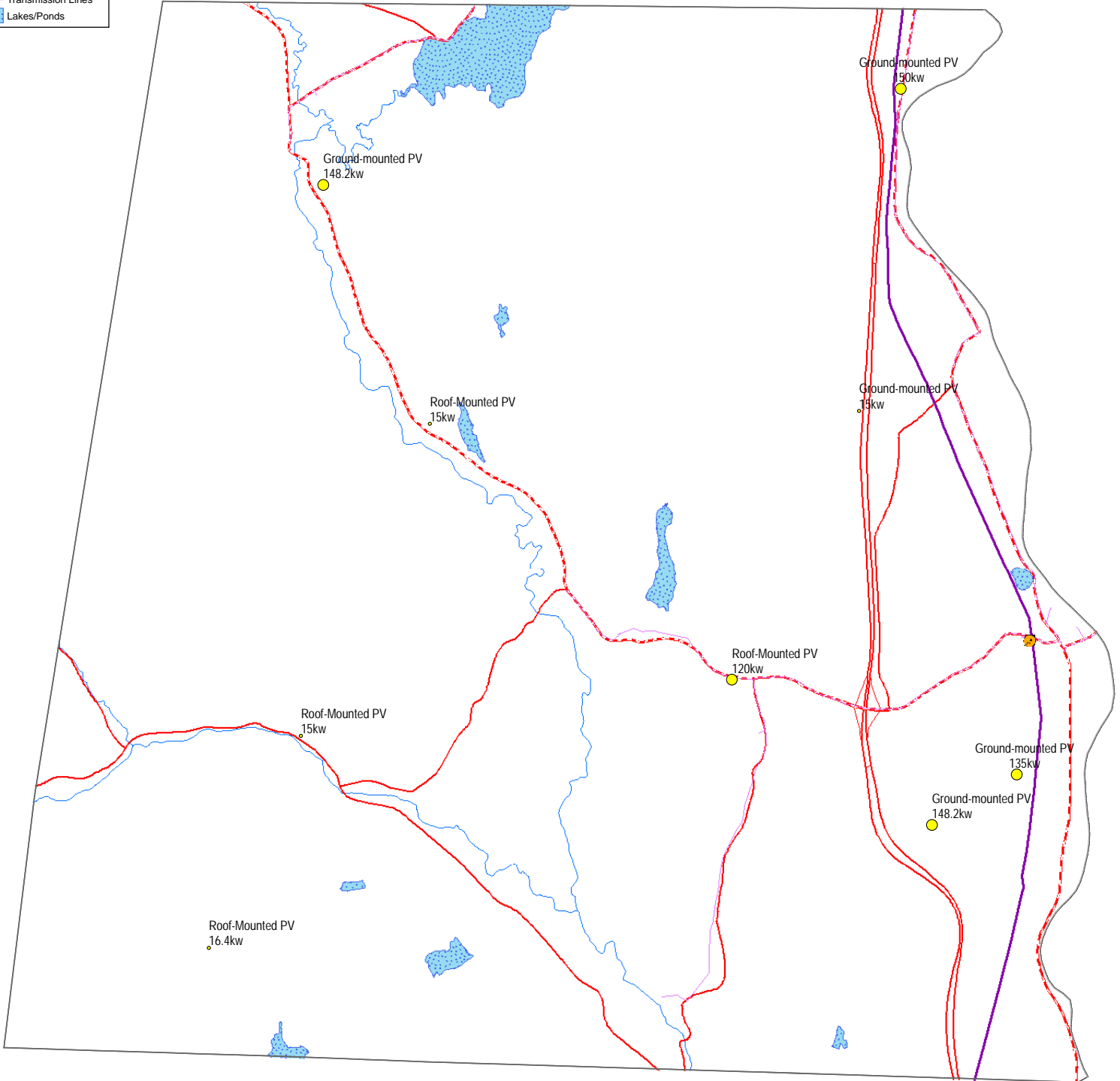
Existing Energy Generation

This map was created as part of a Regional Energy Planning Initiative being conducted by the Two Rivers-Ottawaquechee Regional Commission, and the Vermont Public Service Department.

2020 Town Plan Adopted 9/11/2020

THETFORD

- BIOMASS KW**
- 19
- 20 - 375
- HYDRO KW**
- 15 - 100
- 101 - 500
- 501 - 2000
- 2001 - 37400
- Capacity_k**
- 15 - 25
- 26 - 100
- 101 - 500
- 501 - 2200
- Substations
- 3 Phase Power Lines
- Transmission Lines
- Lakes/Ponds

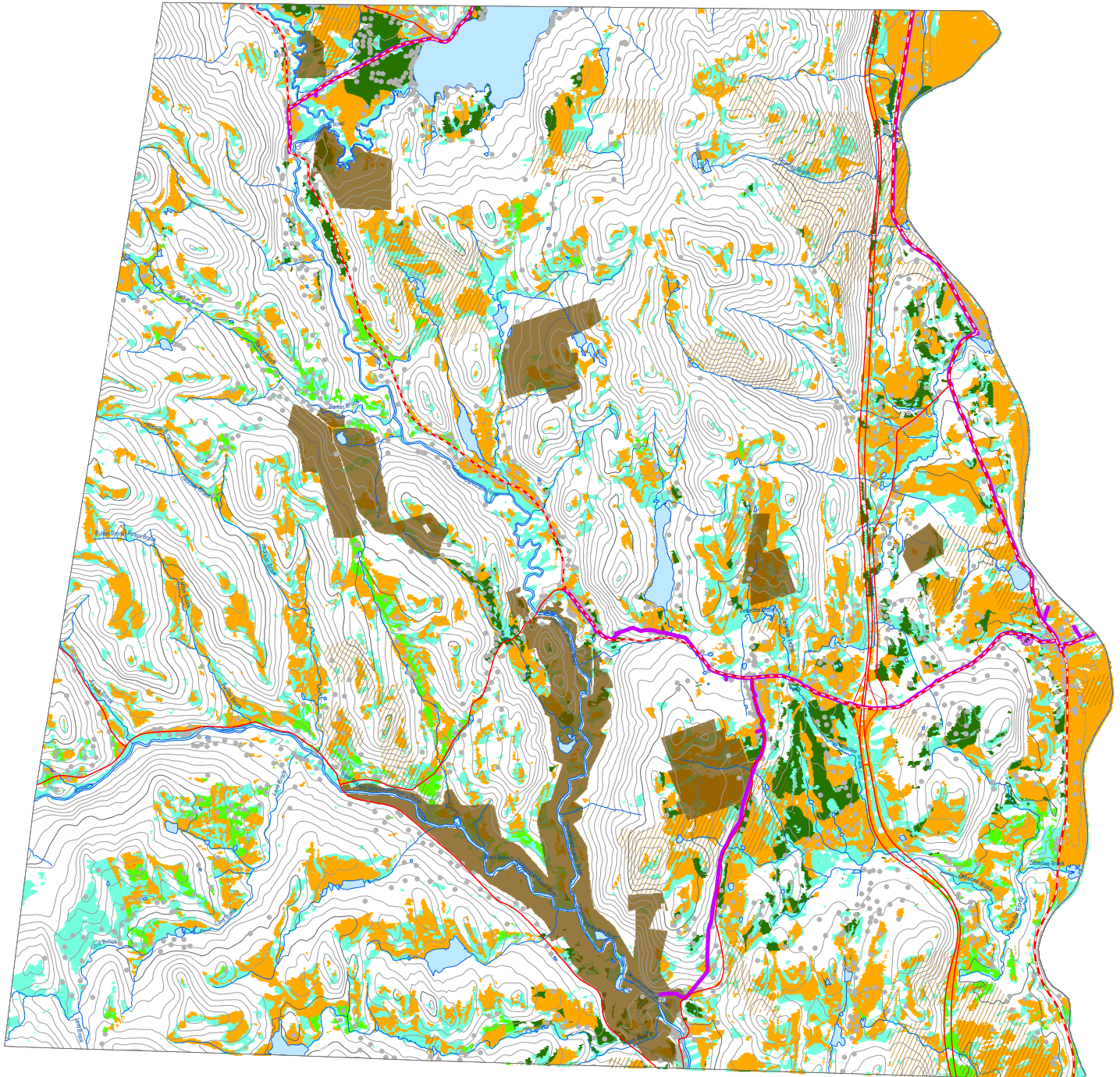
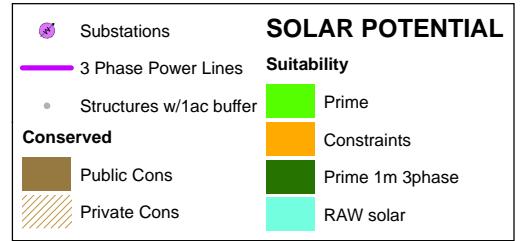


Solar Energy Potential

This map was created as part of a Regional Energy Planning Initiative being conducted by the Two Rivers-Ottawaquechee Regional Commission, and the Vermont Public Service Department.

2020 Town Plan Adopted 9/11/2020

THETFORD



Solar

This map shows areas of potential electricity generation from solar energy. It includes areas with good access to solar radiation and also considers other conditions that may limit the feasibility of solar energy development. These limiting factors are referred to as constraints. Areas of prime solar potential exist where the natural conditions make development feasible and no constraints are present.

These maps are designed to initially identify areas and follow-up on-site work is required to verify the areas are feasible for projects. They are subject to revision and are NOT intended to green-light or fast-track projects.

DARK GREEN Prime: No Constraints within 1 mile 3 phase power
GREEN Prime: No Constraints no known or possible constraints present
ORANGE Constraints: no known but at least one or more possible constraints
BLUE GREEN Raw potential: with constraints

Known Constraints
 Vernal Pools (confirmed and unconfirmed layers)
 DEC River Corridors
 FEMA Floodways
 State-significant Natural Communities and Rare, Threatened, and Endangered Species
 Wilderness Areas, including National Wilderness Areas
 Class 1 and Class 2 Wetlands (VSWI and advisory layers)

Possible Constraints
 Agricultural Soils (VT Agriculturally Important Soil Units)
 FEMA Special Flood Hazard Areas
 Protected Lands (Updated 07/26/2016.)
 Act 250 Agricultural Soil Mitigation areas
 Deer Wintering Areas
 ANR's Vermont Conservation Design: Highest Priority Forest Block Datasets
 Forest Blocks - Connectivity
 Forest Blocks - Interior
 Forest Blocks - Physical Land Division
 Hydric Soils

TRORC Unsuitable areas (included in known constraints)
 FEMA Floodways
 Wilderness Areas, including National Wilderness Areas
 Class 1 Wetland

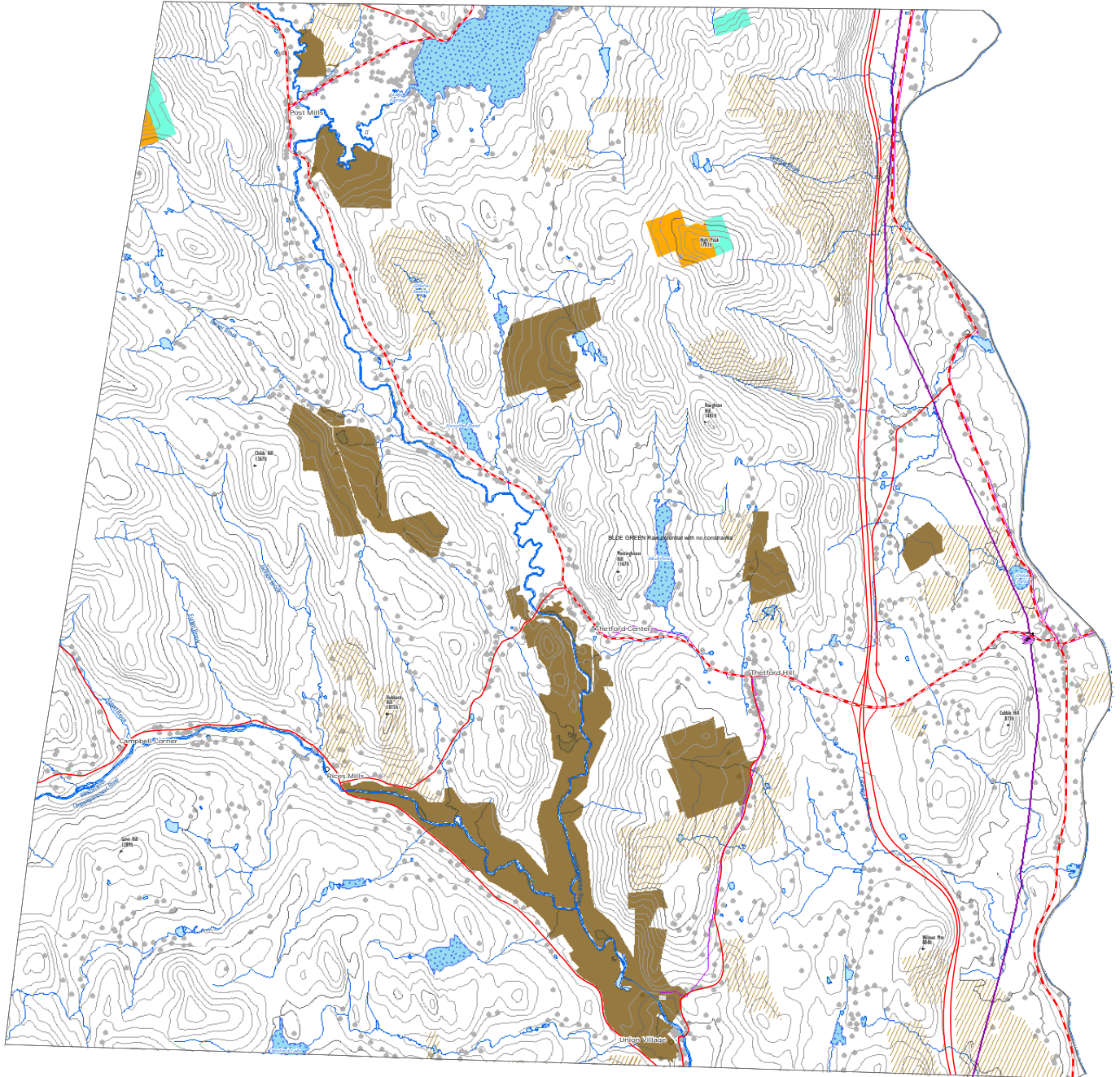
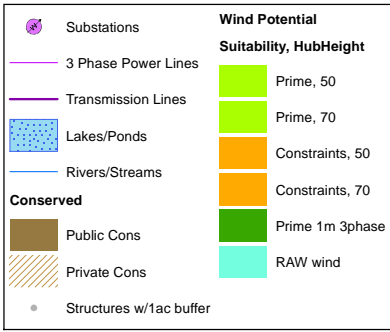


Wind Energy Potential

This map was created as part of a Regional Energy Planning Initiative being conducted by the Two Rivers-Ottawaquechee Regional Commission, and the Vermont Public Service Department.

2020 Town Plan Adopted 9/11/2020

THETFORD



Wind
This map shows areas of potential wind energy development. It includes areas with good access to wind resources and also considers other conditions that may limit the feasibility of wind energy development. These limiting factors are referred to as constraints. Areas of prime wind potential exist where the natural conditions make development feasible and no constraints are present.

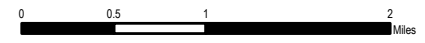
These maps are designed to initially identify areas and follow-up on-site work is required to verify the areas are feasible for projects. They are subject to revision and are NOT intended to green-light or fast-track projects.

DARK GREEN Prime: No Constraints within 1 mile 3 phase power
GREEN Prime: No Constraints no known or possible constraints present
ORANGE Constraints no known but at least one or more possible constraints present
BLUE GREEN Raw potential with constraints

Known Constraints
 Vernal Pools (confirmed and unconfirmed layers)
 DEC River Corridors
 FEMA Floodways
 State-significant Natural Communities and Rare, Threatened, and Endangered Species
 Wilderness Areas, including National Wilderness Areas Class 1 and Class 2 Wetlands (VSWI and advisory layers)

Possible Constraints
 Agricultural Soils (VT Agriculturally Important Soil Units)
 FEMA Special Flood Hazard Areas
 Protected Lands (Updated 07/26/2016)
 Act 250 Agricultural Soil Mitigation areas
 Deer Wintering Areas
 ANR's Vermont Conservation Design Highest Priority Forest Block Datasets
 Forest Blocks - Interior
 Forest Blocks - Physical Land Division
 Hydric Soils

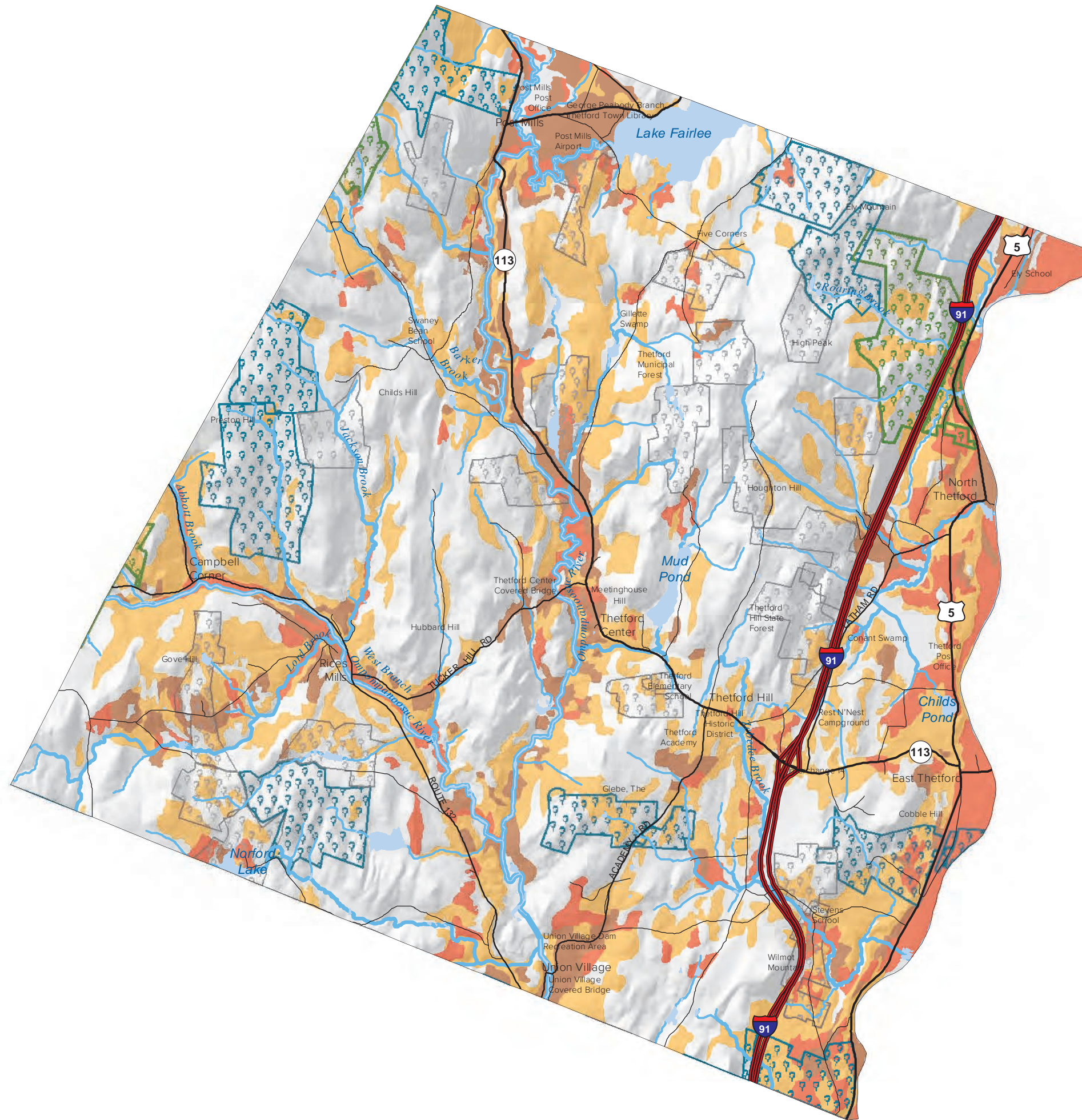
TRORC Unavailable areas (included in known constraints)
 FEMA Floodways
 Wilderness Areas, including National Wilderness Areas Class 1 Wetland



Thetford Working Forest Resources



1:55,000



Use Value Forestland

- 101 - 200
- 201 - 500
- 501 - 2898

Productive Forest Soils

- Very High Productivity
- High Productivity
- Moderate Productivity

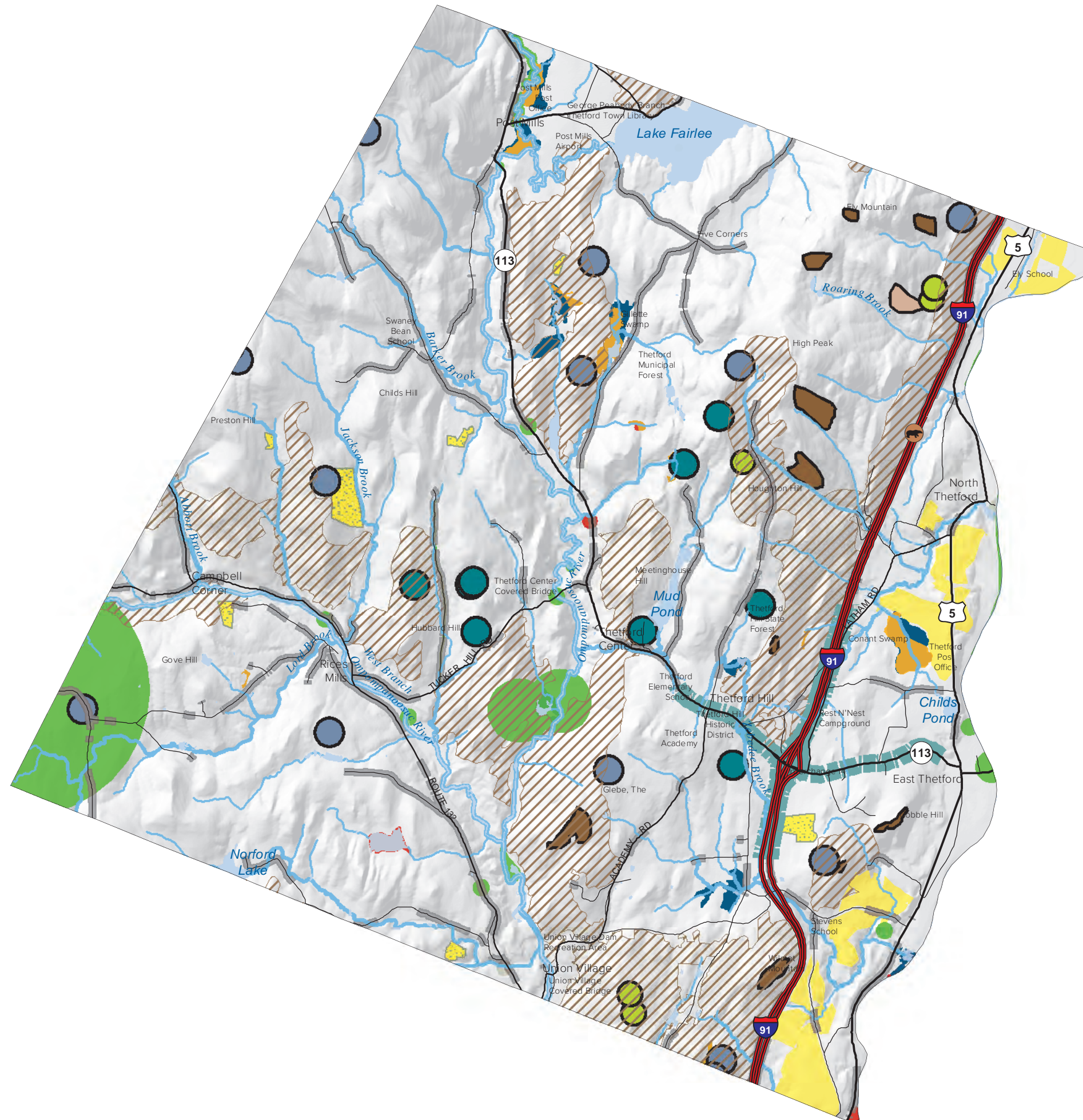
This map is not a survey. Map contains data of varying accuracy and age.

Map produced: 11/11/2019
Map Coordinate System: VT State Plane (NAD 83)

Thetford Wildlife Plant, and Natural Community Resources



1:55,000



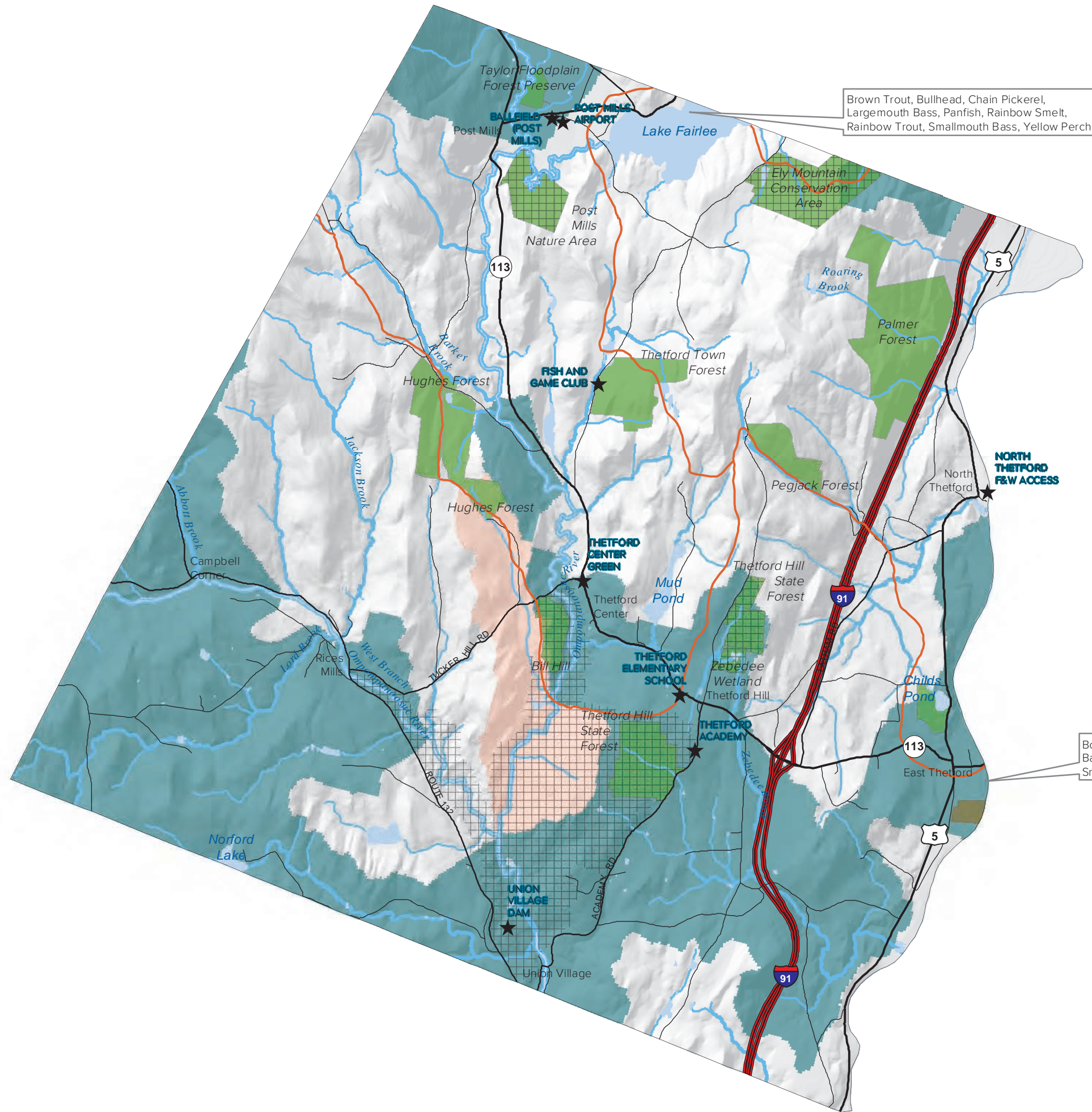
This map is not a survey. Map contains data of varying accuracy and age.

Map produced: 11/11/2019
Map Coordinate System: VT State Plane (NAD 83)

Thetford Recreation Resources



1:55,000



- ★ Outdoor Recreation Sites
- Snowmobile Trail
- Property with Public Trails
- Protected Lands with Public Access
- Public Access
- Limited Public Access
- Trout Streams and Rivers
- Mixed Wild Trout
- Wild Brook Trout

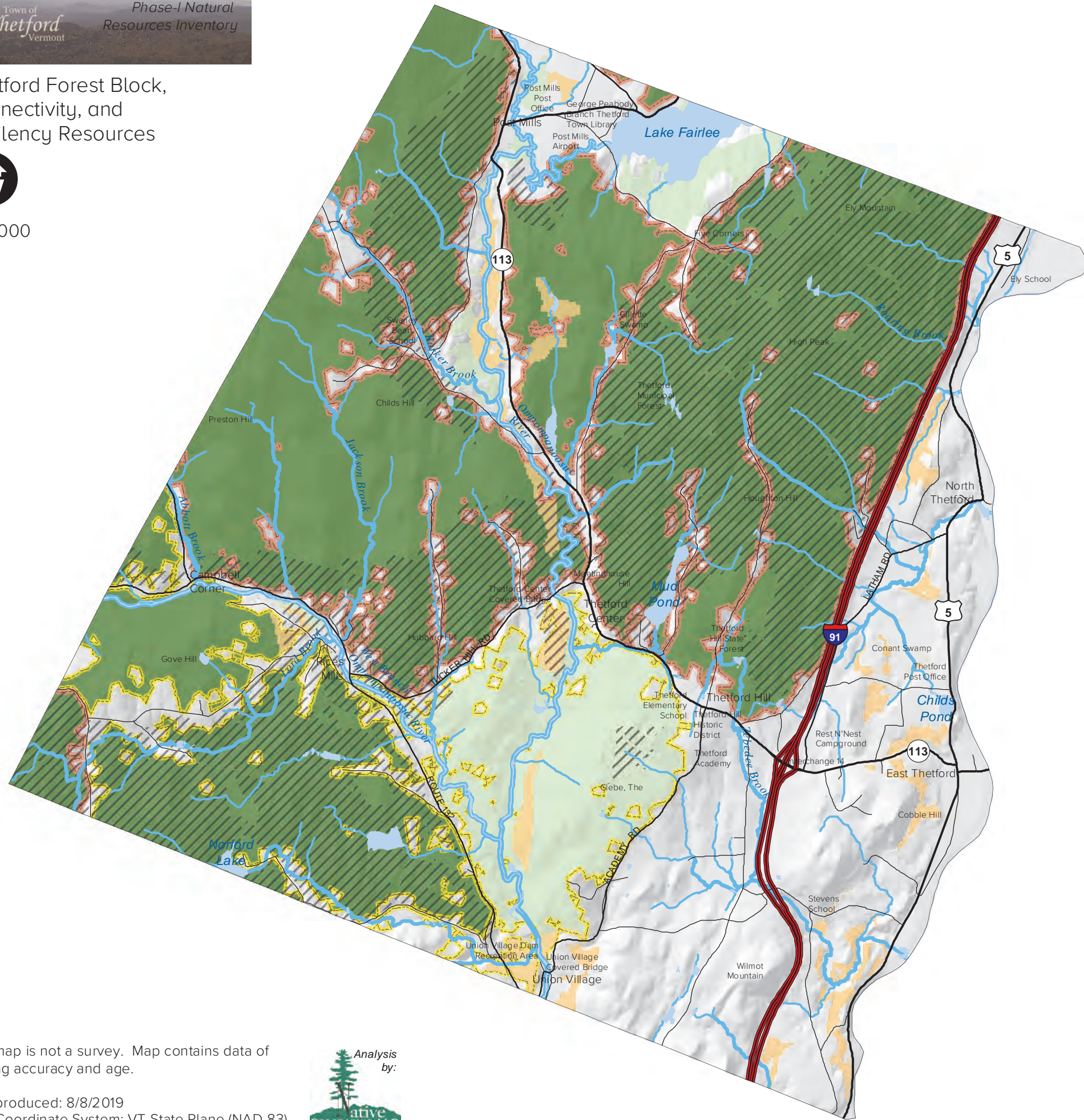
This map is not a survey. Map contains data of varying accuracy and age.

Map produced: 11/11/2019
Map Coordinate System: VT State Plane (NAD 83)

Thetford Forest Block, Connectivity, and Resiliency Resources

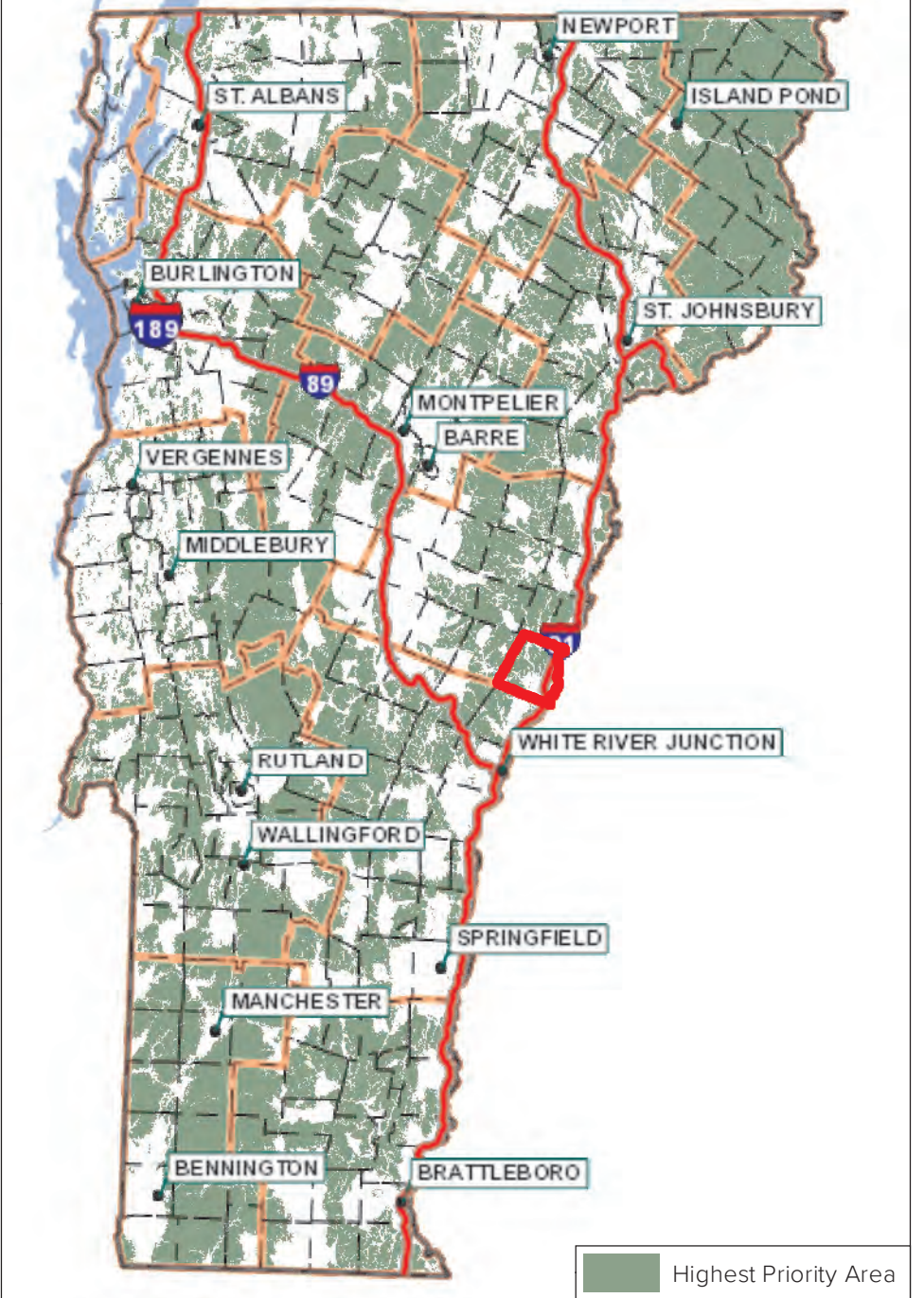


1:55,000



- Highest Priority Interior Forest Blocks
- Priority Interior Forest Blocks
- Highest Priority Connectivity Blocks
- Priority Connectivity Forest Blocks
- Physical Landscape Diversity Blocks
- Priority Resilient Lands

Vermont Highest Priority Interior Forest Blocks, Connector Blocks, and Physical Landscape Diversity Blocks



This map is not a survey. Map contains data of varying accuracy and age.

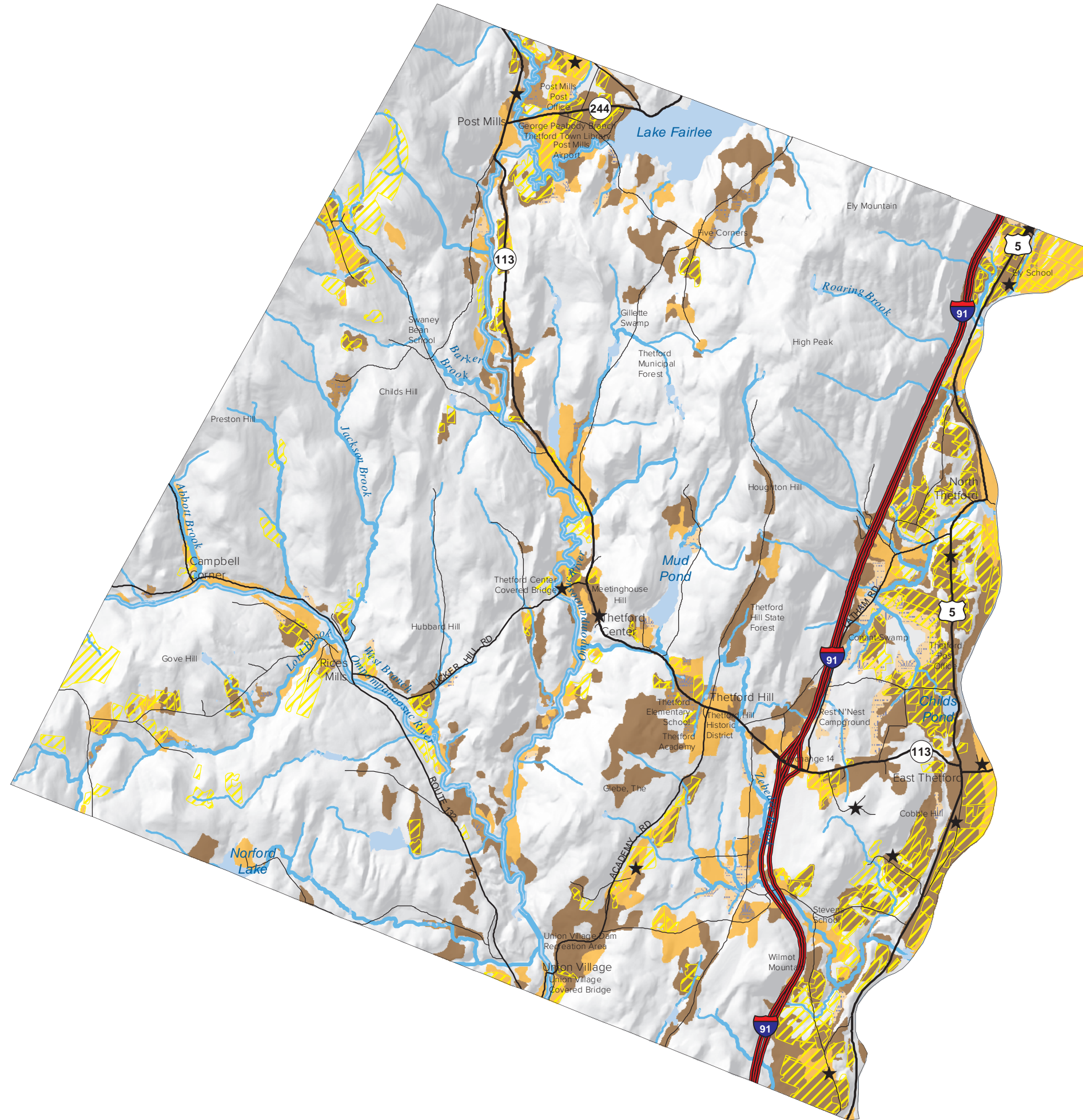
Map produced: 8/8/2019
Map Coordinate System: VT State Plane (NAD 83)



Thetford
Farmland
Resources



1:55,000



- ★ Active Farms
- Fields
- Important Agricultural Soils
- Prime
- Prime with limitations
- Statewide
- Statewide with limitations

This map is not a survey. Map contains data of varying accuracy and age.

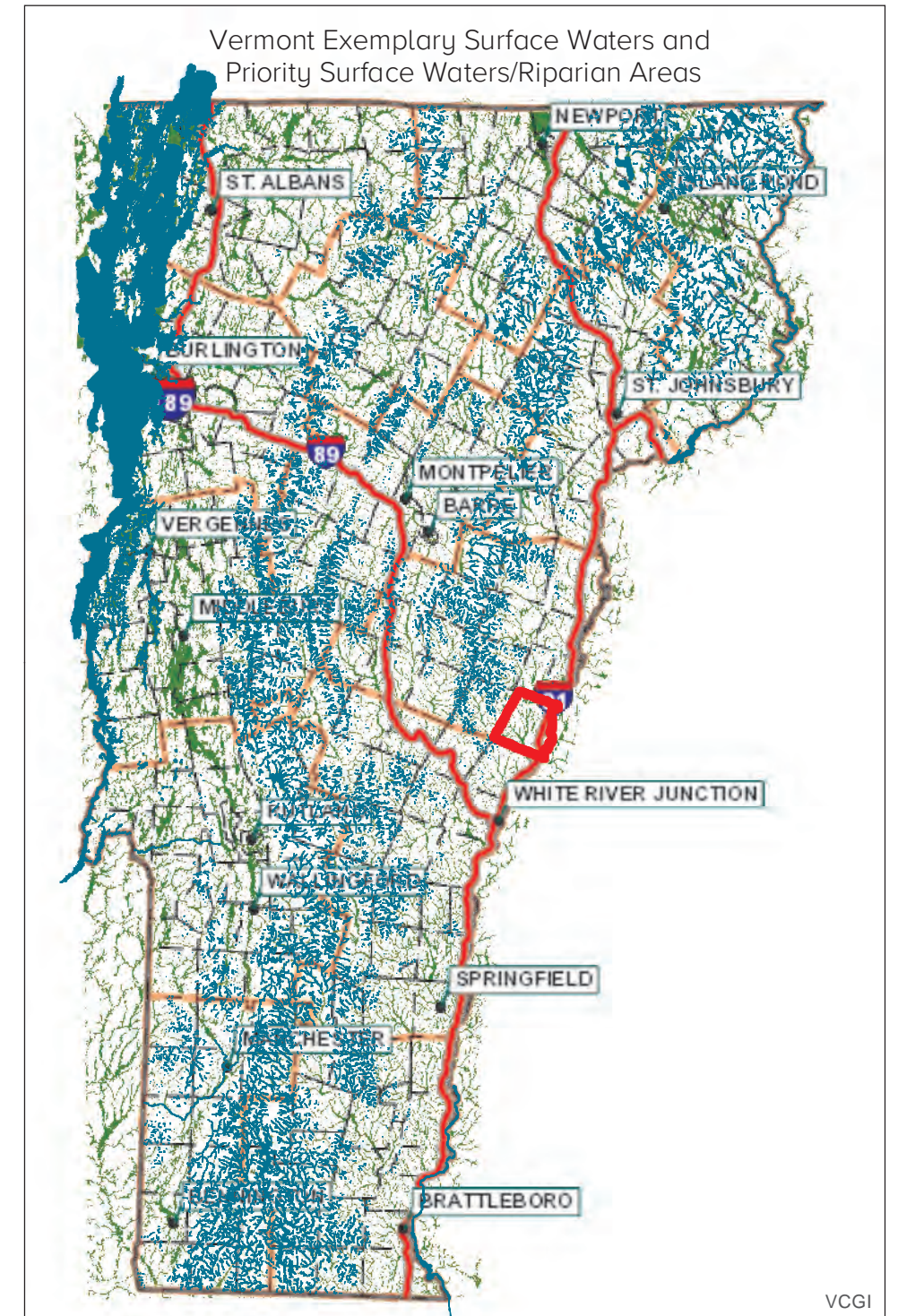
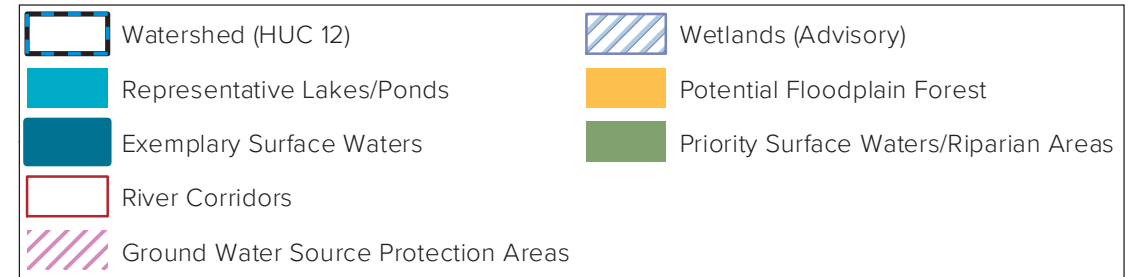
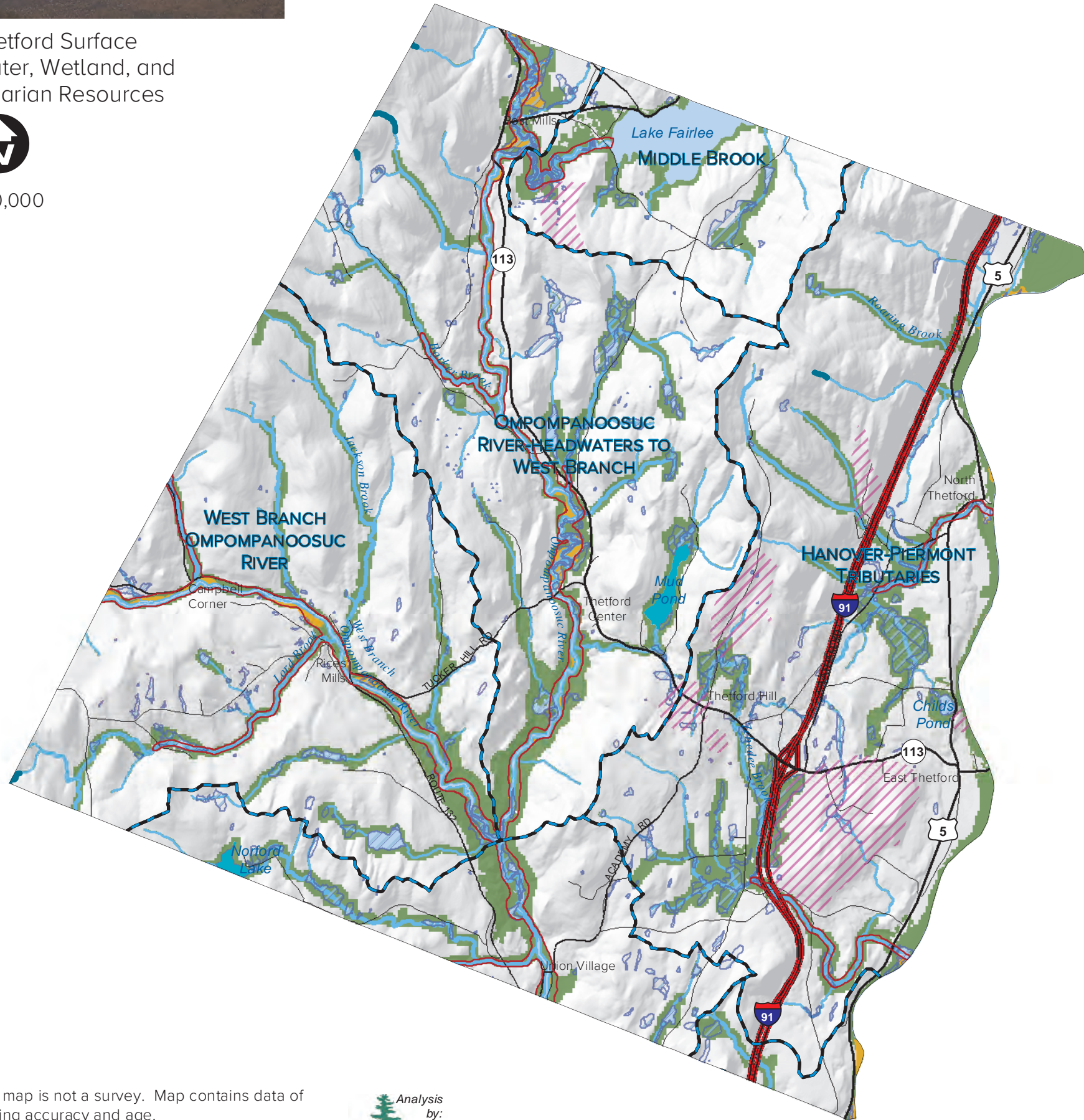
Map produced: 8/8/2019
Map Coordinate System: VT State Plane (NAD 83)



Thetford Surface Water, Wetland, and Riparian Resources



1:60,000



This map is not a survey. Map contains data of varying accuracy and age.

Map produced: 8/8/2019
Map Coordinate System: VT State Plane (NAD 83)

