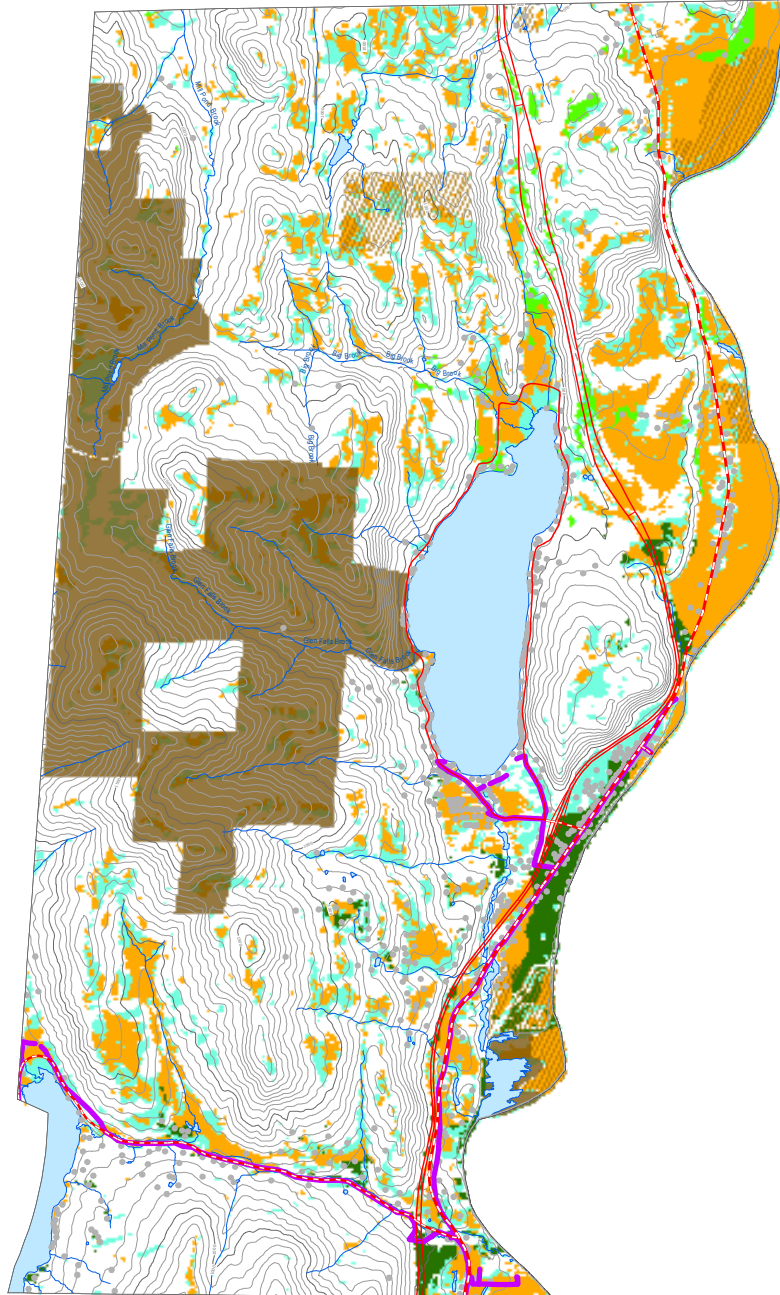
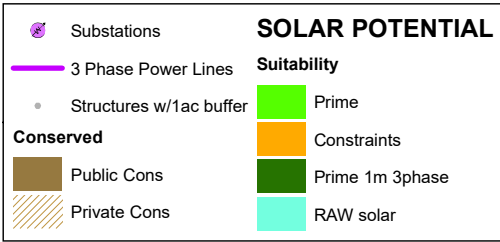


Solar Energy Potential

This map was created as part of a Regional Energy Planning Initiative.
Created: 2017

Fairlee, Vermont
Town Plan
Adopted: 1/21/2020



Solar

This map shows areas of potential electricity generation from solar energy. It includes areas with good access to solar radiation and also considers other conditions that may limit the feasibility of solar energy development. These limiting factors are referred to as constraints. Areas of prime solar potential exist where the natural conditions make development feasible and no constraints are present.

These maps are designed to initially identify areas and follow-up on-site work is required to verify the areas are feasible for projects. They are subject to revision and are NOT intended to green-light or fast-track projects.

DARK GREEN Prime: No Constraints within 1 mile 3 phase power
GREEN Prime: No Constraints no known or possible constraints present
ORANGE Constraints: no known but at least one or more possible constraints
BLUE GREEN Raw potential with constraints

Known Constraints
 Vernal Pools (confirmed and unconfirmed layers)
 DEC River Corridors
 FEMA Floodways
 State-significant Natural Communities and Rare, Threatened, and Endangered Species
 Wilderness Areas, including National Wilderness Areas
 Class 1 and Class 2 Wetlands (VSW) and advisory layers)

Possible Constraints
 Agricultural Soils (VT Agriculturally Important Soil Units)
 FEMA Special Flood Hazard Areas
 Protected Lands (Updated 07/29/2016.)
 Act 250 Agricultural Soil Mitigation areas
 Deer Wintering Areas
 ANR's Vermont Conservation Design Highest Priority Forest Block Datasets
 Forest Blocks - Connectivity
 Forest Blocks - Interior
 Forest Blocks - Physical Land Division
 Hydric Soils

TRORC Unsuitable areas (included in known constraints)
 FEMA Floodways
 Wilderness Areas, including National Wilderness Areas
 Class 1 Wetland

