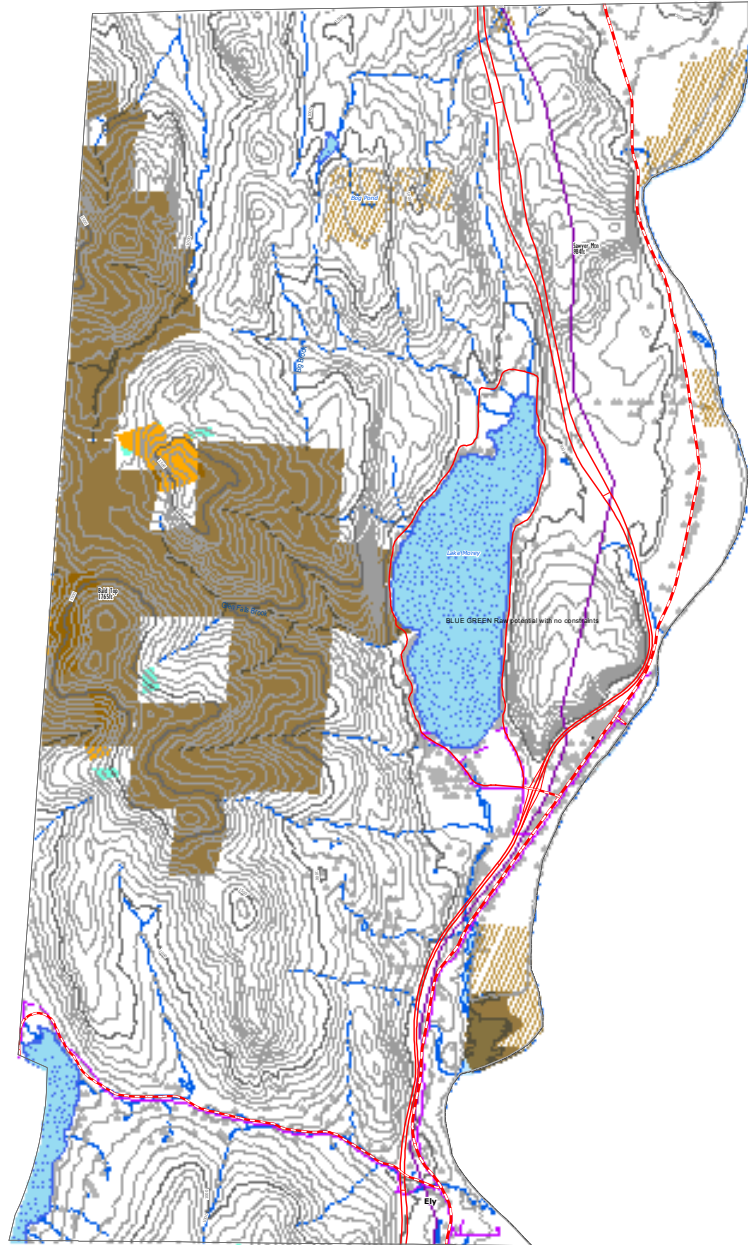
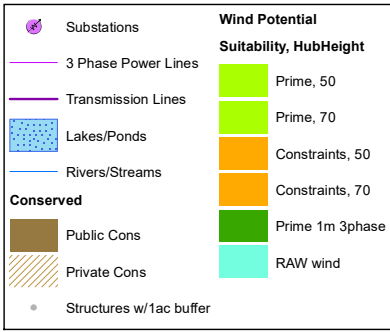


# Wind Energy Potential

This map was created as part of a Regional Energy Planning Initiative.  
Created: 2019

Fairlee, Vermont  
**Town Plan**  
**Adopted: 1/21/2020**

## FAIRLEE



### Wind

This map shows areas of potential wind energy development. It includes areas with good access to wind resources and also considers other conditions that may limit the feasibility of wind energy development. These limiting factors are referred to as constraints. Areas of prime wind potential exist where the natural conditions make development feasible and no constraints are present.

These maps are designed to initially identify areas and follow-up on-site work is required to verify the areas are feasible for projects. They are subject to revision and are NOT intended to green-light or fast-track projects.

**DARK GREEN** Prime: No Constraints within 1 mile 3 phase power  
**GREEN** Prime: No Constraints no known or possible constraints present  
**ORANGE** Constraints no known but at least one or more possible constraints  
**BLUE GREEN** Raw potential with constraints

**Known Constraints**  
 Vernal Pools (confirmed and unconfirmed layers)  
 DEC River Corridors  
 FEMA Floodways  
 State-significant Natural Communities and Rare, Threatened, and Endangered Species  
 Wilderness Areas, including National Wilderness Areas  
 Class 1 and Class 2 Wetlands (VSWI and advisory layers)

**Possible Constraints**  
 Agricultural Soils (VT Agriculturally Important Soil Units)  
 FEMA Special Flood Hazard Areas  
 Protected Lands (Updated 07/26/2016)  
 Act 250 Agricultural Soil Mitigation areas  
 Deer Wintering Areas  
 ANR's Vermont Conservation Design Highest Priority Forest Block Datasets  
 Forest Blocks - Connectivity  
 Forest Blocks - Interior  
 Forest Blocks - Physical Land Division  
 Hydric Soils

**TRORC Unsuitable areas (included in known constraints)**  
 FEMA Floodways  
 Wilderness Areas, including National Wilderness Areas  
 Class 1 Wetland



**TRORC**  
 Two Rivers-Ottawaquechee  
 REGIONAL COMMISSION  
 trorc.org

