

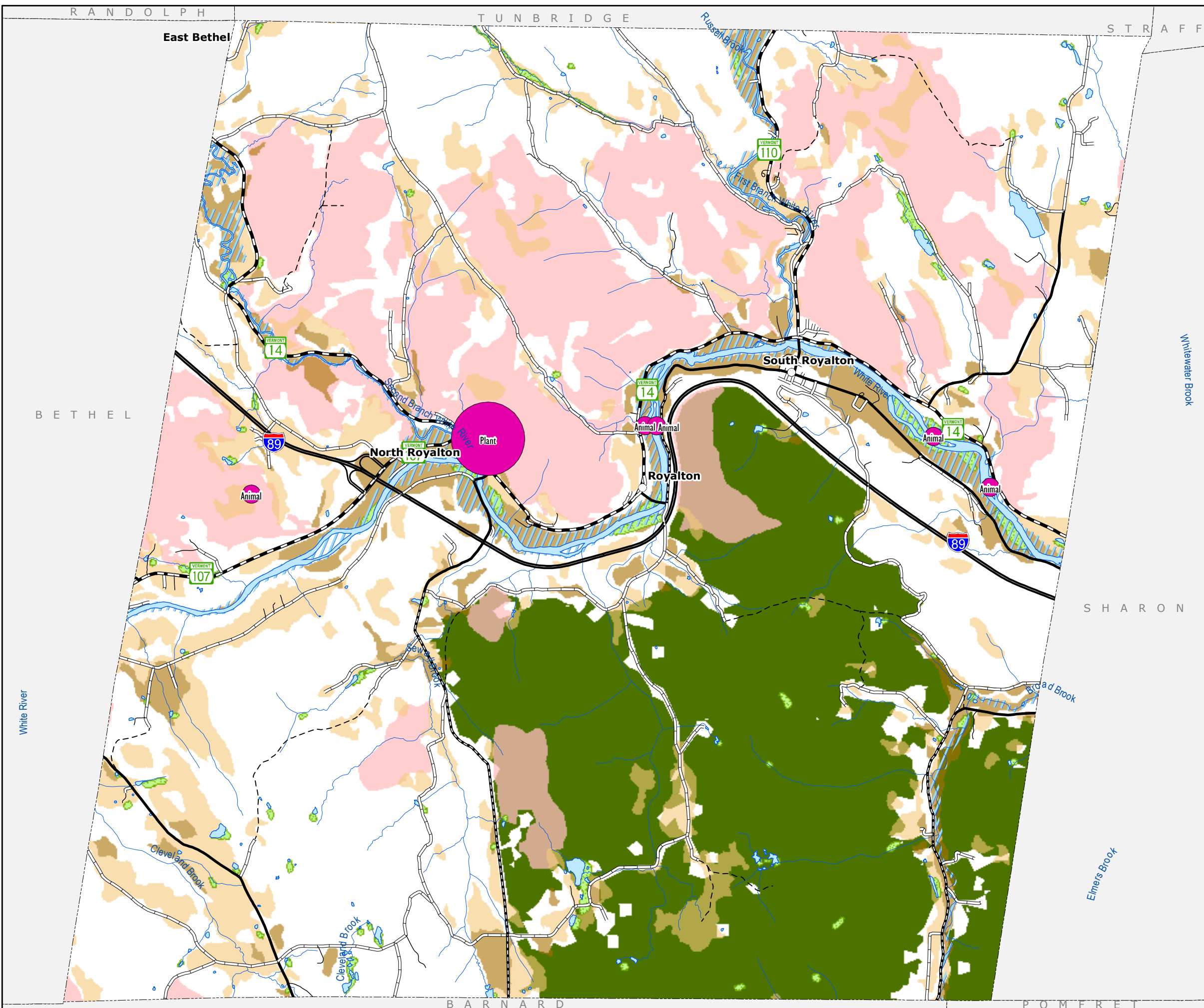
Natural Resources









Town Plan

Royalton, Vermont

Map 3 of 8

Adopted March 3, 2020



-  deer wintering areas
-  flood plain 100 year (FEMA FIRM)
-  wetlands
-  Highest Priority Forest Connectivity Block
-  surface water
-  Prime AG soils
-  Statewide AG soils
-  VT Rare Natural Heritage Sites

Funded in part by a Municipal Planning Grant from the VT Dept. of Housing and Community Affairs

