

Adopted March 3, 2020

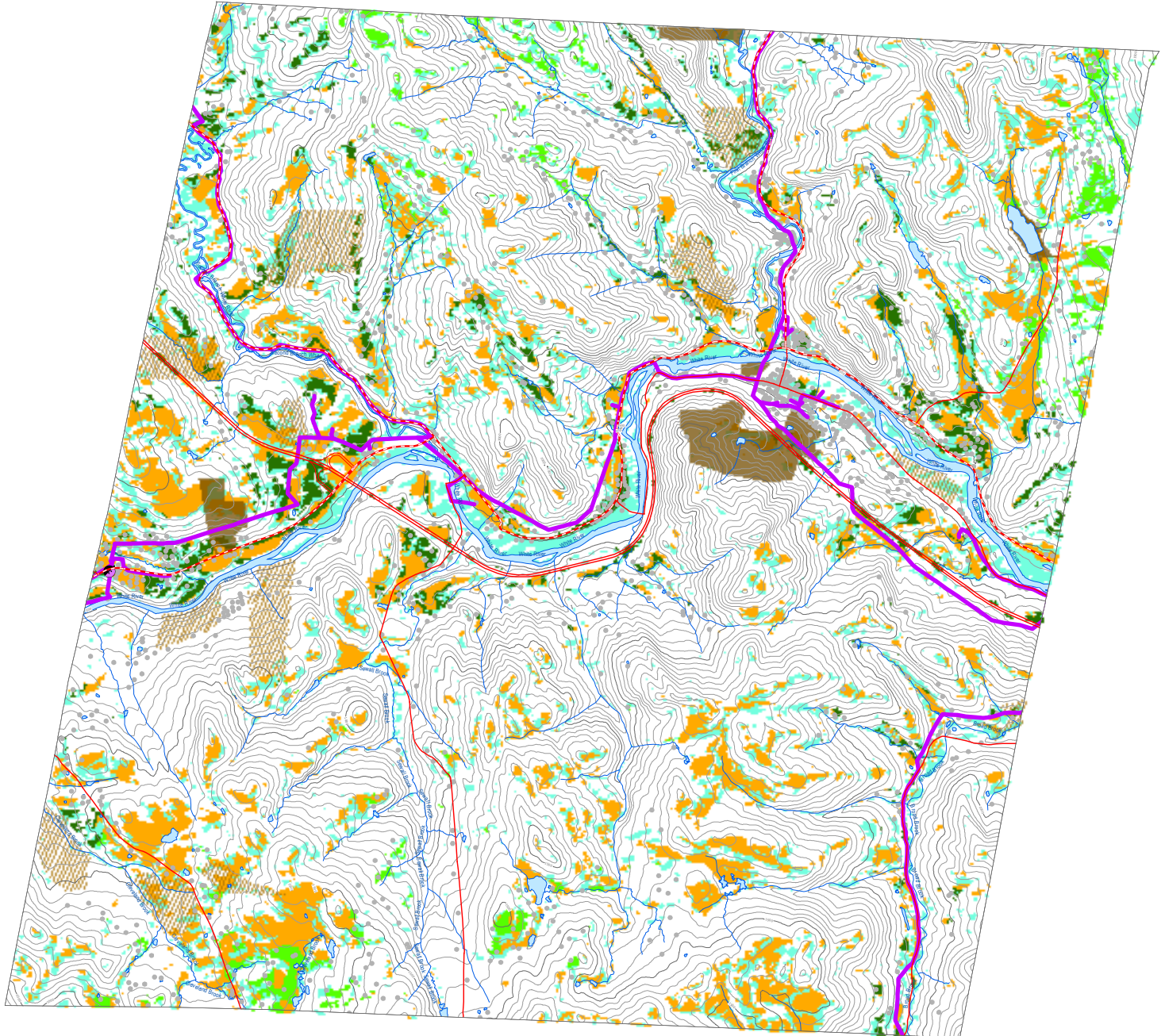
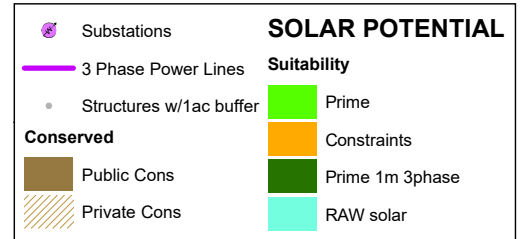
Royalton, Vermont

Map 7 of 8

# Solar Energy Potential

This map was created as part of a Regional Energy Planning Initiative.  
Created: 2017

## ROYALTON



### Solar

This map shows areas of potential electricity generation from solar energy. It includes areas with good access to solar radiation and also considers other conditions that may limit the feasibility of solar energy development. These limiting factors are referred to as constraints. Areas of prime solar potential exist where the natural conditions make development feasible and no constraints are present.

These maps are designed to initially identify areas and follow-up on-site work is required to verify the areas are feasible for projects. They are subject to revision and are NOT intended to green-light or fast-track projects.

**DARK GREEN Prime:** No Constraints within 1 mile 3 phase power  
**GREEN Prime:** No Constraints no known or possible constraints present  
**ORANGE Constraints:** no known but at least one or more possible constraints  
**BLUE GREEN Raw potential with constraints**

Known Constraints  
Vernal Pools (confirmed and unconfirmed layers)  
DEC River Corridors  
FEMA Floodways  
State-significant Natural Communities and Rare, Threatened, and Endangered Species  
Wilderness Areas, including National Wilderness Areas  
Class 1 and Class 2 Wetlands (VSW and advisory layers)

Possible Constraints  
Agricultural Soils (VT Agriculturally Important Soil Units)  
FEMA Special Flood Hazard Areas  
Protected Lands (Updated 07/28/2016.)  
Act 250 Agricultural Soil Mitigation areas  
Deer Wintering Areas  
ANR's Vermont Conservation Design Highest Priority Forest Block Datasets  
Forest Blocks - Connectivity  
Forest Blocks - Interior  
Forest Blocks - Physical Land Division  
Hydric Soils

TRORC Unsuitable areas (included in known constraints)  
FEMA Floodways  
Wilderness Areas, including National Wilderness Areas  
Class 1 Wetland



**TRORC**  
Two Rivers-Ottawaquechee  
REGIONAL COMMISSION  
[trorc.org](http://trorc.org)

