

# Zoning Districts















Thetford

**Effective:  
October 17, 2011**

## DISTRICTS

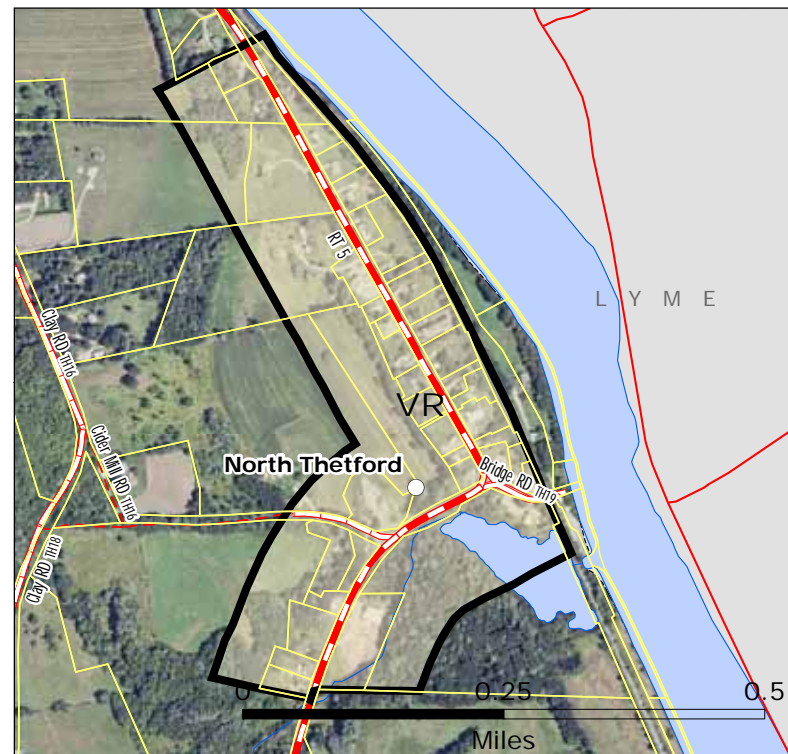
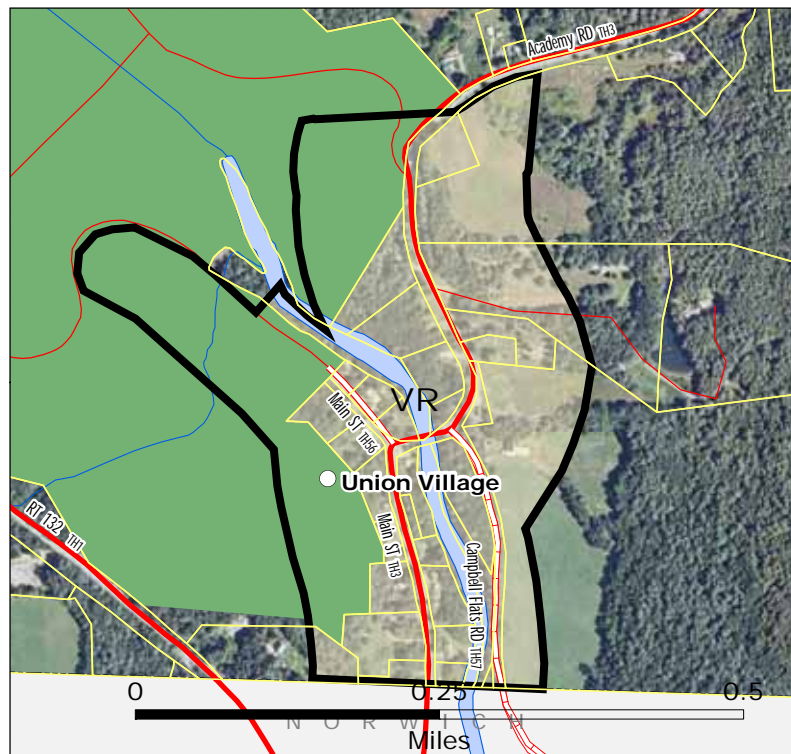
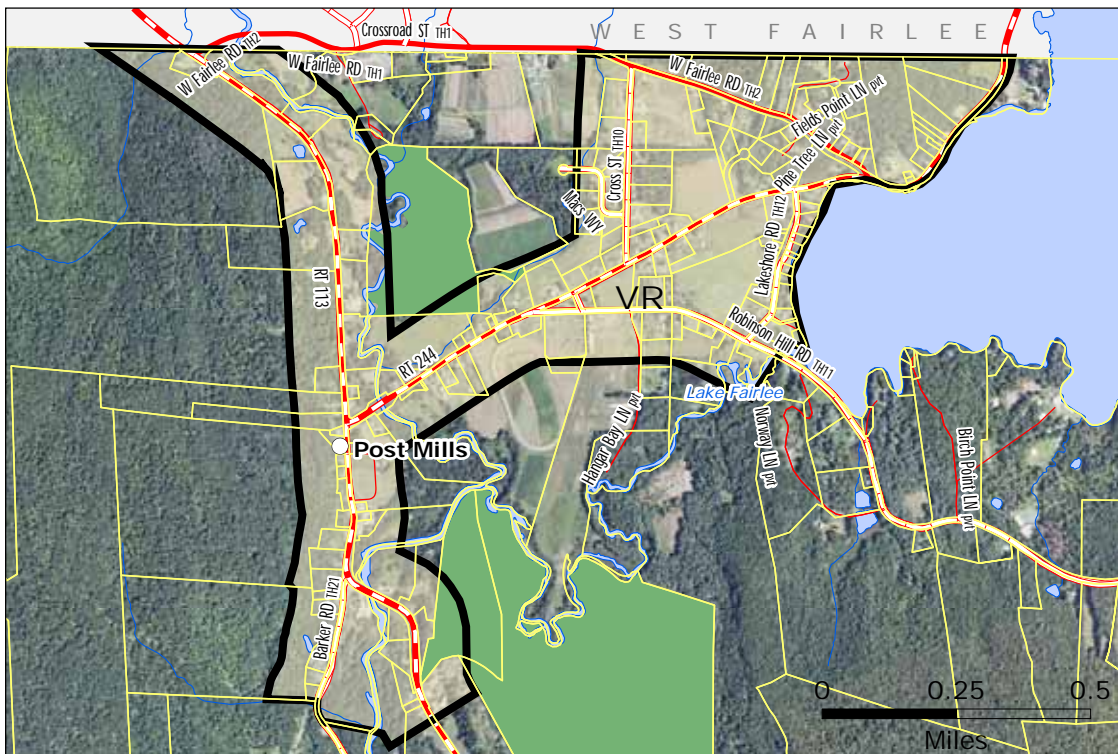
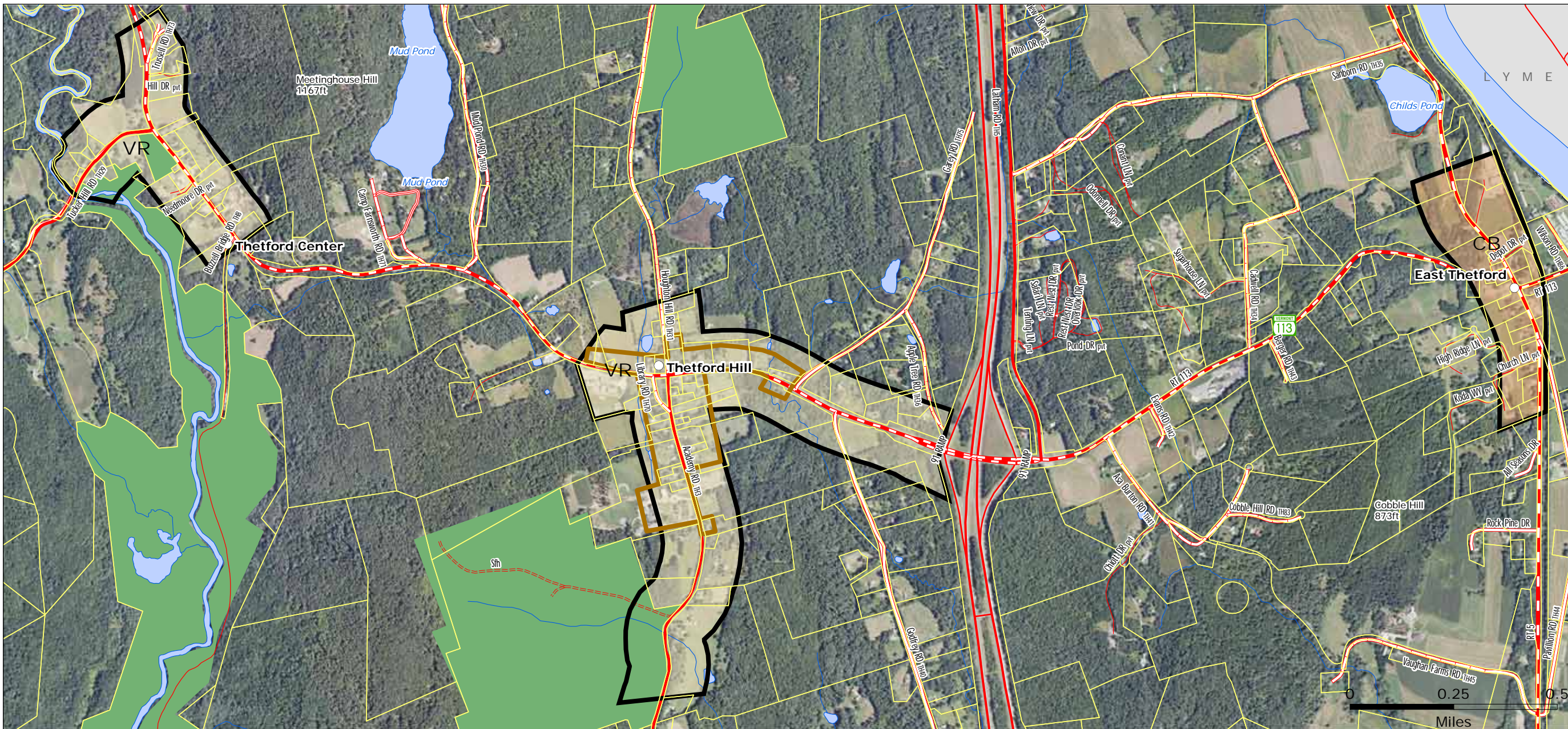
-  Village Residential VR
-  Community Business CB
-  Rural

-  Thetford Hill
-  Historic Preservation Overlay

-  VT route/TH cls 1
-  TH cls 2
-  TH cls 2 gravel
-  TH cls 3
-  TH cls 3 gravel
-  TH cls 4
-  trail
-  private
-  US route
-  US interstate
-  VT forest hwy
-  addresses
-  public lands
-  tax parcel boundaries

2009 Aerial Photos

**TWO RIVERS-OTTAUQUECHEE**  
REGIONAL COMMISSION  
**GIS Service Center**  
3117 Rose Hill  
The King Farm  
Woodstock, VT 05091  
802-457-3188  
**trorc.org**



R:\TOWN\GIS\TH\proj\zoning\zoning.mxd - 10/18/2011 @ 5:15:05 PM