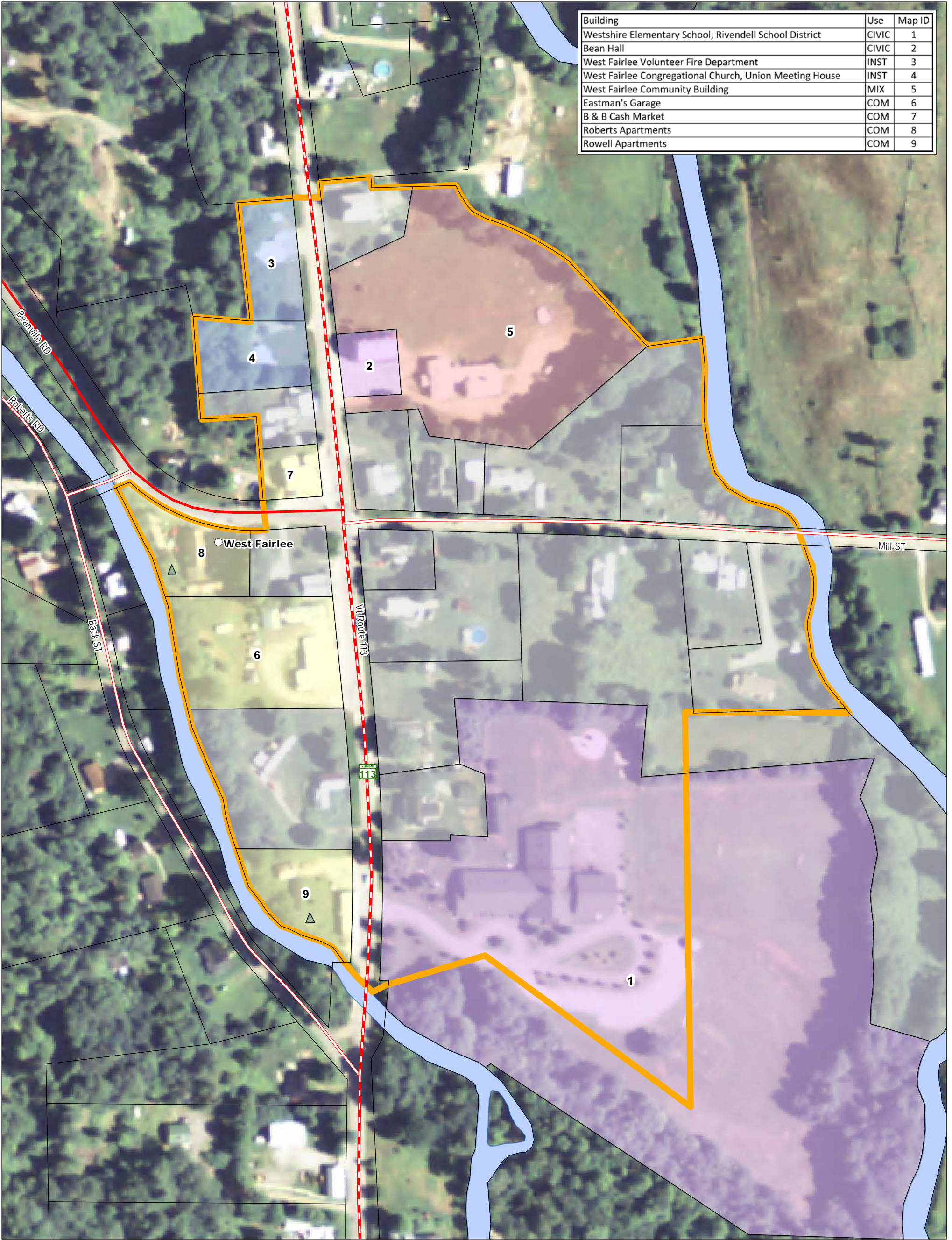


Building	Use	Map ID
Westshire Elementary School, Rivendell School District	CIVIC	1
Bean Hall	CIVIC	2
West Fairlee Volunteer Fire Department	INST	3
West Fairlee Congregational Church, Union Meeting House	INST	4
West Fairlee Community Building	MIX	5
Eastman's Garage	COM	6
B & B Cash Market	COM	7
Roberts Apartments	COM	8
Rowell Apartments	COM	9



Village Designation Map

West Fairlee, Vermont

Designated on May 28, 2013 by the Vermont Downtown Board

- VT route/TH cls 1
- TH cls 2
- TH cls 2 gravel
- TH cls 3
- TH cls 3 gravel
- TH cls 4
- trail
- private
- US route
- US interstate
- VT forest hwy
- Commercial
- Mixed Use
- Public/Civic
- Institutional
- Residential
- Village Designation Boundary

0 100 200

Feet

1:1,802

1 inch = 150 feet

April 22, 2013



TWO RIVERS-OTTAUQUECHEE
REGIONAL COMMISSION
GIS Service Center
128 King Farm Rd
Woodstock, VT 05091
802-457-3188
trorc.org