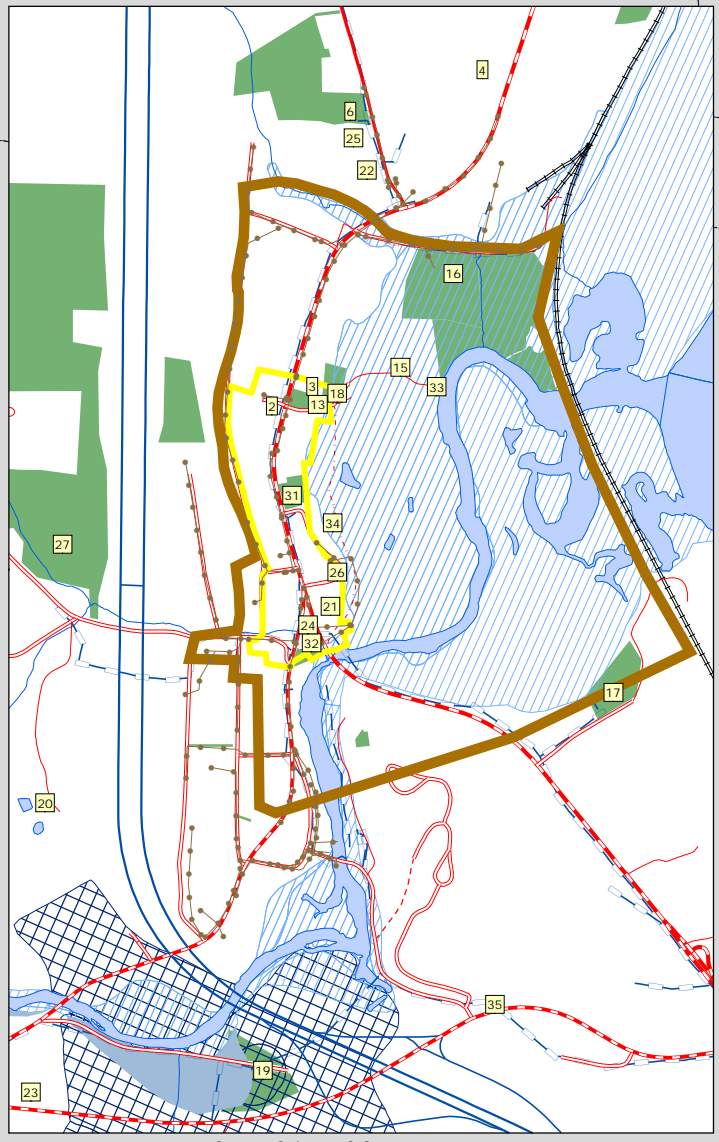


- Churches**
1. Evangelical Free Church
  2. UCC Cong. Church
  3. Grace Methodist Church
  4. Our Lady of Perpetual Help
  5. Goshen Church (historic)
- Schools**
6. Bradford Elementary School
  7. Oxbow Union High School & River Bend Career and Technical Center
- Cemeteries**
8. Upper Plain Cemetery
  9. Sawyer Cemetery
  10. Wright's Mtn. Cemetery
  11. West Bradford Cemetery
  12. Goshen Cemetery
- Municipal**
13. Town Office
  14. Town Garage/Recycle
  15. Memorial Field
  16. Sewer Plant
  17. Fire Station
  18. Police
  19. Water Wells
  20. Reservoirs
  21. OESU
  22. State Garage
  23. State Police
  24. Library
  25. National Guard Armory
  26. Post Office
- Recreation**
27. Low-St. John Forest
  28. Rest Area
  29. Elizabeth's Park
  30. Wright's Mtn. Rec. Area
  31. Denney Memorial Park
  32. Boch Park
  33. Bugbee Boat Landing
  34. Bradford Golf Course
  35. Park & Ride

- surface water
- PUBLIC LAND
- ▨ 100 year flood plain
- ▩ Well Head Protection Area
- Historic District
- ▭ Designated Village
- water lines
- sewer lines
- 3 Phase Lines
- Transmission Lines



Inset 1: 17,400  
 0 0.1 0.2 Miles  
 1 inch = 1,450 feet

**Current and Future  
 Education, Utilities,  
 & Facilities**  
 Bradford, VT  
**Town Plan**  
*Map 5 of 5*  
 Adopted: 10/12/2023

0.3 0.15 0 0.3 Miles  
 inch = 3,000 feet

- US route
- VT route/TH cls 1
- TH cls 2
- TH cls 2 gravel
- TH cls 3
- TH cls 3 gravel
- TH cls 4 gravel
- private
- railroad

**TRORC**  
 Two Rivers-Ottawaquechee  
 REGIONAL COMMISSION

128 King Farm Rd.  
 Woodstock, VT 05091 802.457.3188  
 trorc.org