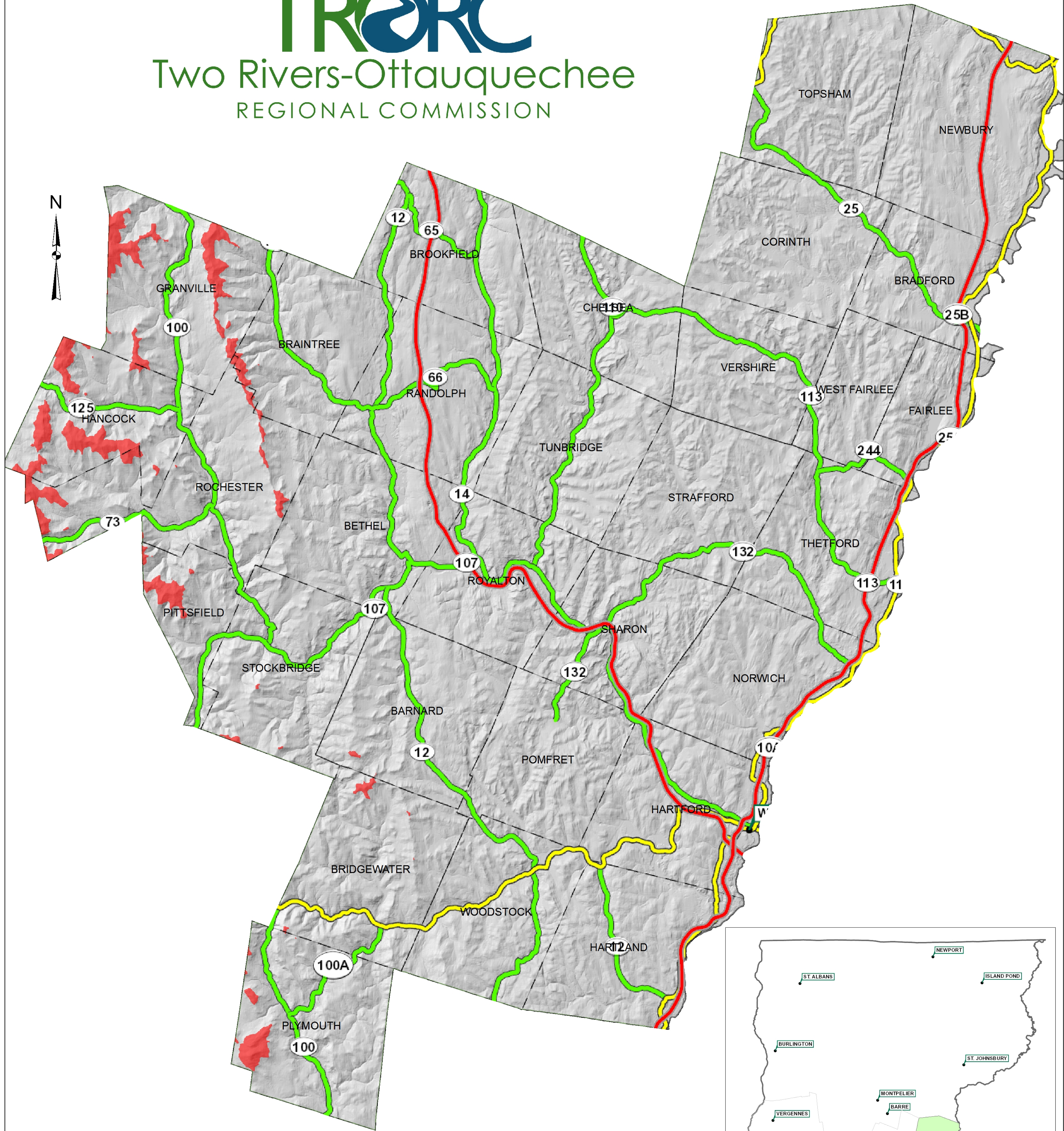


Areas with Elevations Above 2,500 Ft (762 m) Within the Two Rivers-Ottawaquechee Regional Commission (TRORC)



Two Rivers-Ottawaquechee
REGIONAL COMMISSION



All areas within the TRORC with elevations above 2,500 ft (762 m) are highlighted in red. This overview TRORC Digital Elevation Model (DEM) was extracted at a resolution of 15 m from the 0.7 m resolution Vermont LiDAR DEM.

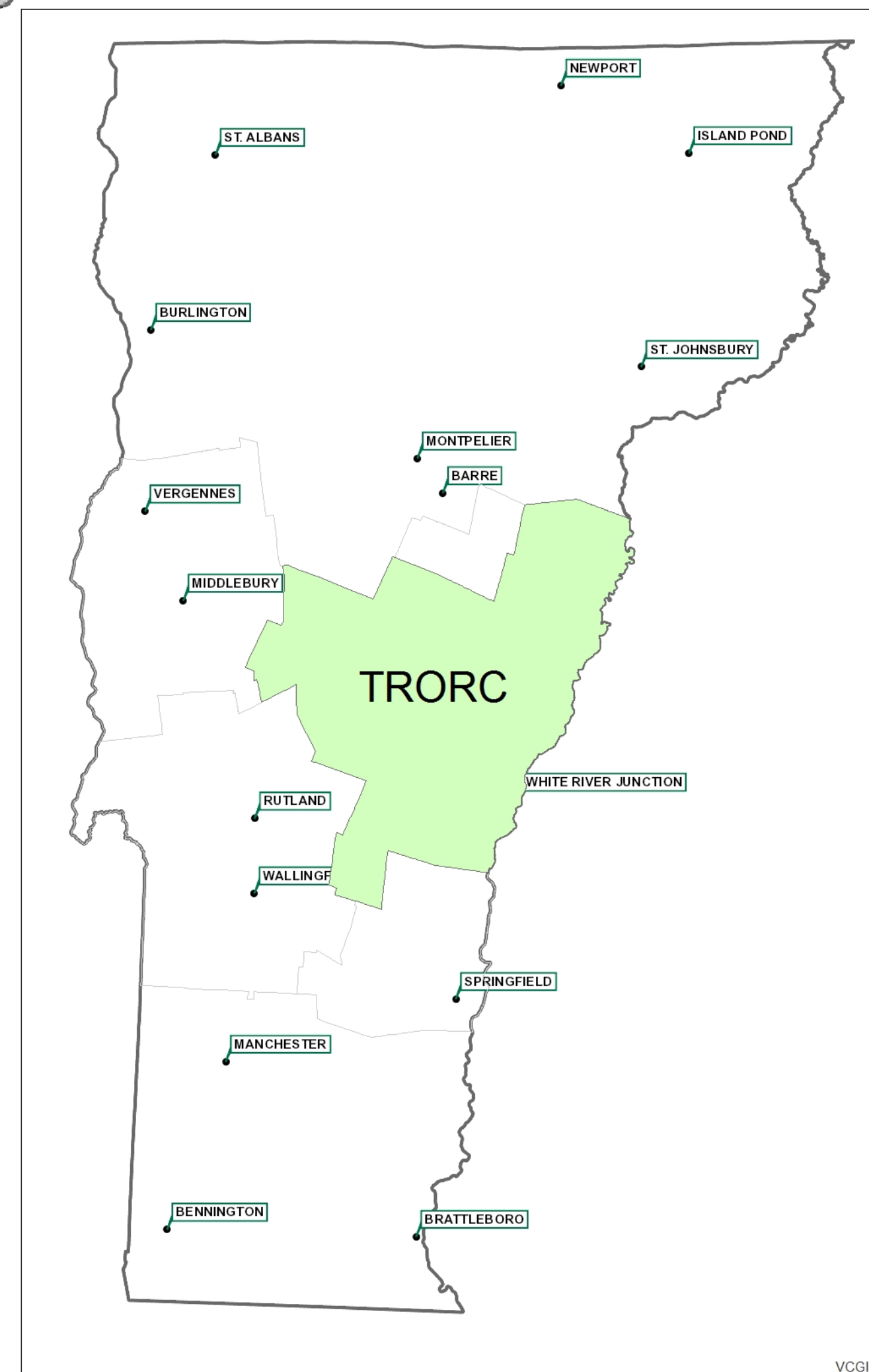
Total TRORC Area: 819,460 acres
Area above 2500 ft: 13,978 acres

John Waddington: December 2018 (Map 1 of 10)

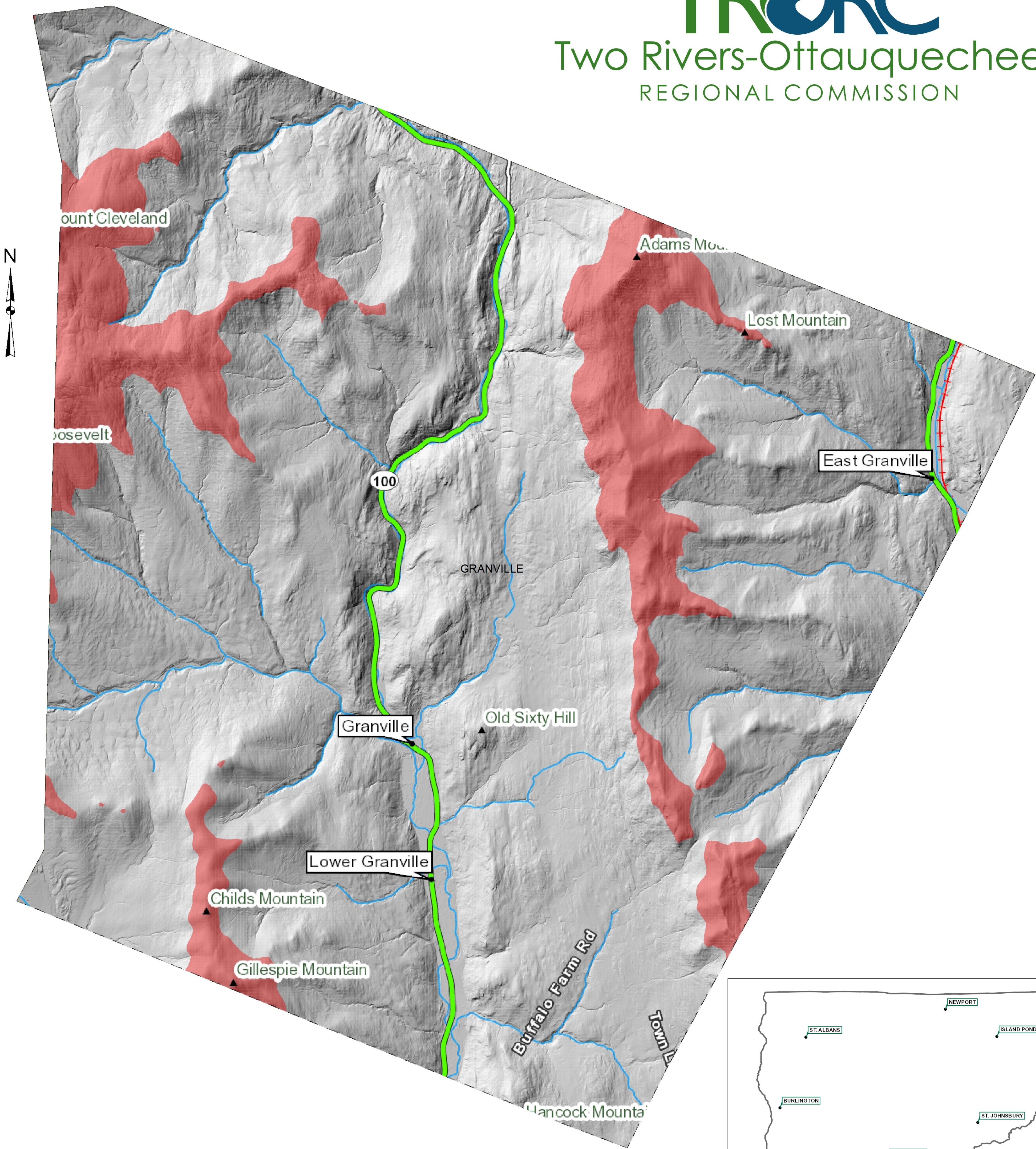
Spatial Reference: NAD83 StatePlane Vermont FIPS 4400

Sources: The primary data source was the Vermont Center for Geographic Information (VCGI) and the Vermont Open Geodata Portal. The layers downloaded include the VT State Base Map, the VT County and Town Boundaries, and the VT Lidar DEM (0.7m resolution).

0 3 6 9 Miles



Areas with Elevations Above 2,500 Ft (762 m) Within the TRORC Town of Granville, Vermont



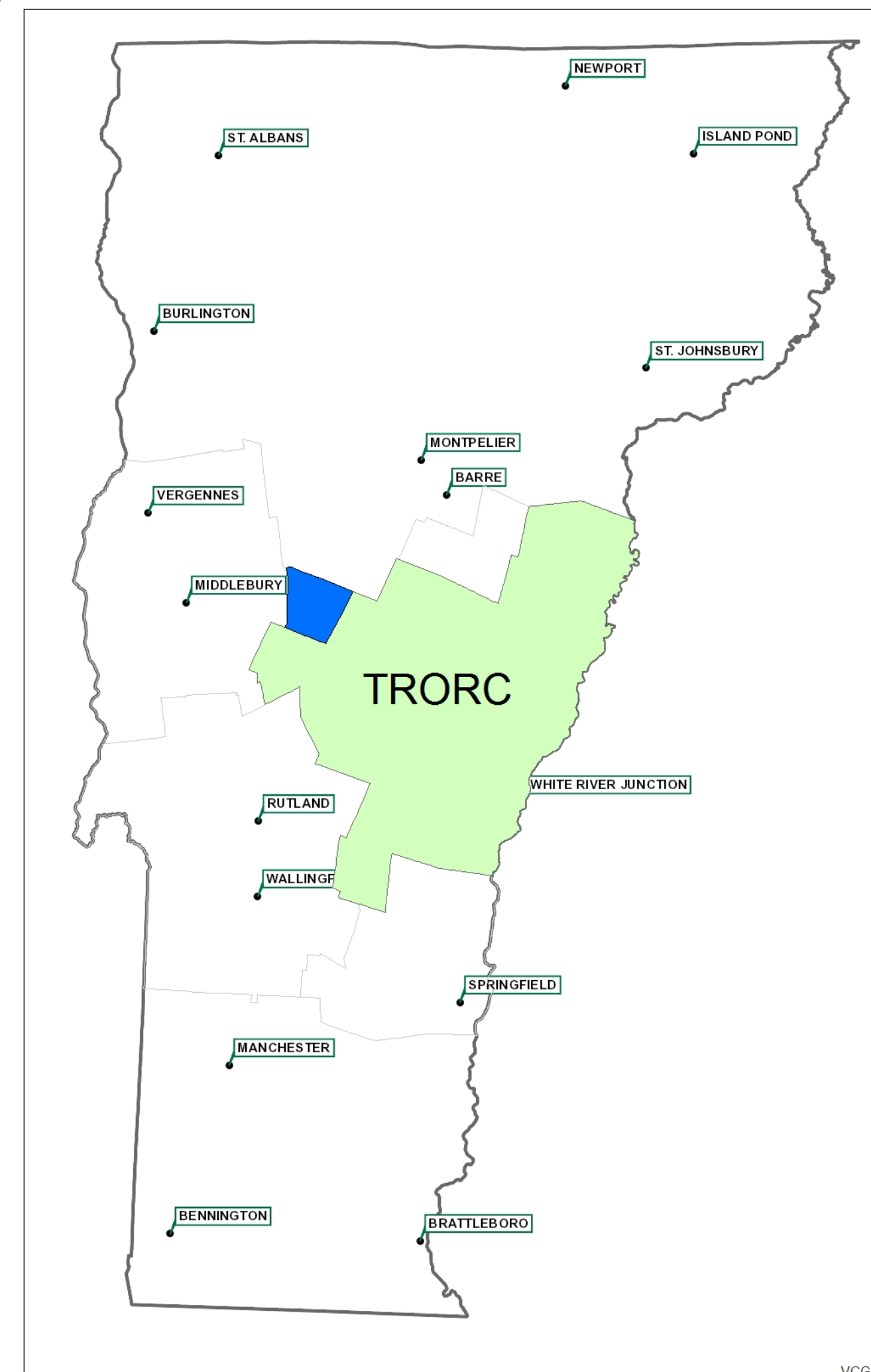
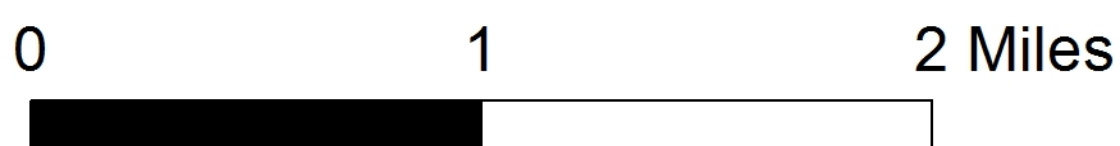
All areas within the Town of Granville, VT with elevations above 2,500 ft (762 m) are highlighted in red. The Digital Elevation Model (DEM) for Granville was extracted at a resolution of 3 m from the 0.7 m resolution Vermont LiDAR DEM.

Total Granville Area= 32,626 acres
 Area Above 2,500 ft= 4,099 acres

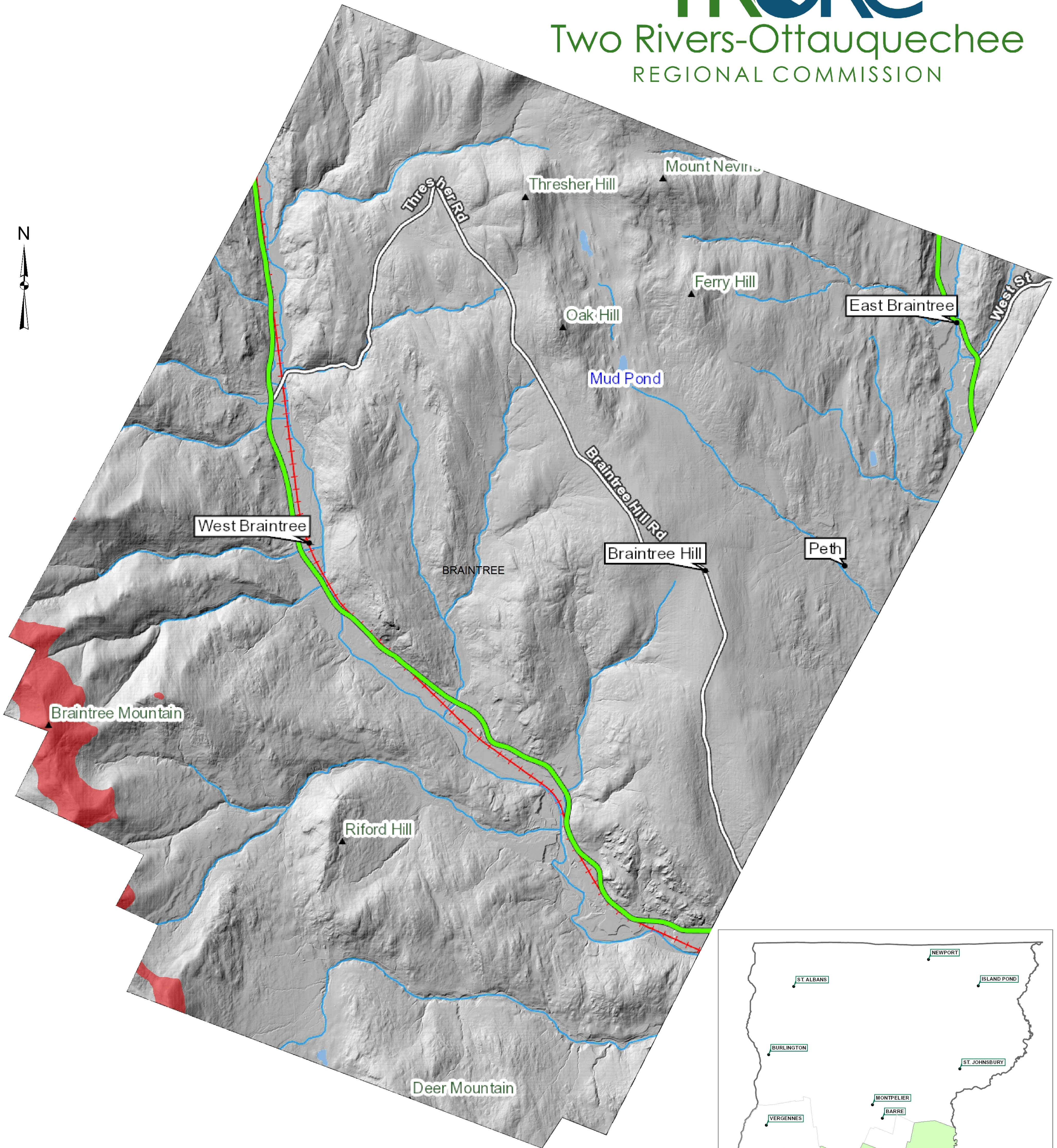
John Waddington: December 2018 (Map 2 of 10)

Spatial Reference: NAD83 StatePlane Vermont FIPS 4400

Sources: The primary data source was the Vermont Center for Geographic Information (VCGI) and the Vermont Open Geodata Portal. The layers downloaded include the VT State Base Map, the VT County and Town Boundaries, and the VT Lidar DEM (0.7m resolution).



Areas with Elevations Above 2,500 Ft (762 m) Within the TRORC Town of Braintree, Vermont



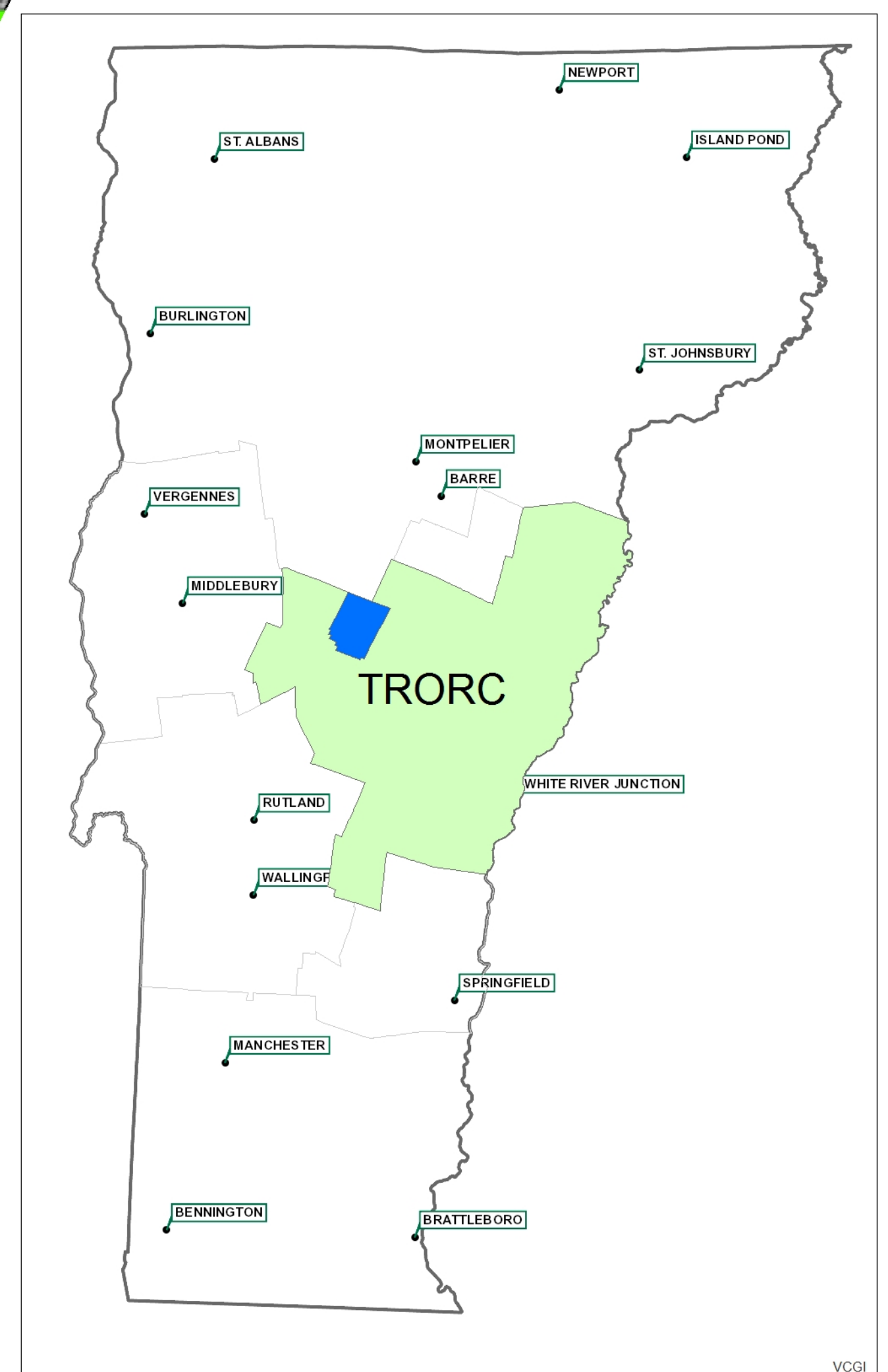
All areas within the Town of Braintree, VT with elevations above 2,500 ft (762 m) are highlighted in red. The Digital Elevation Model (DEM) for Braintree was extracted at a resolution of 3 m from the 0.7 m resolution Vermont LiDAR DEM.

Total Braintree Area= 24,670 acres
 Area Above 2,500 ft= 394 acres

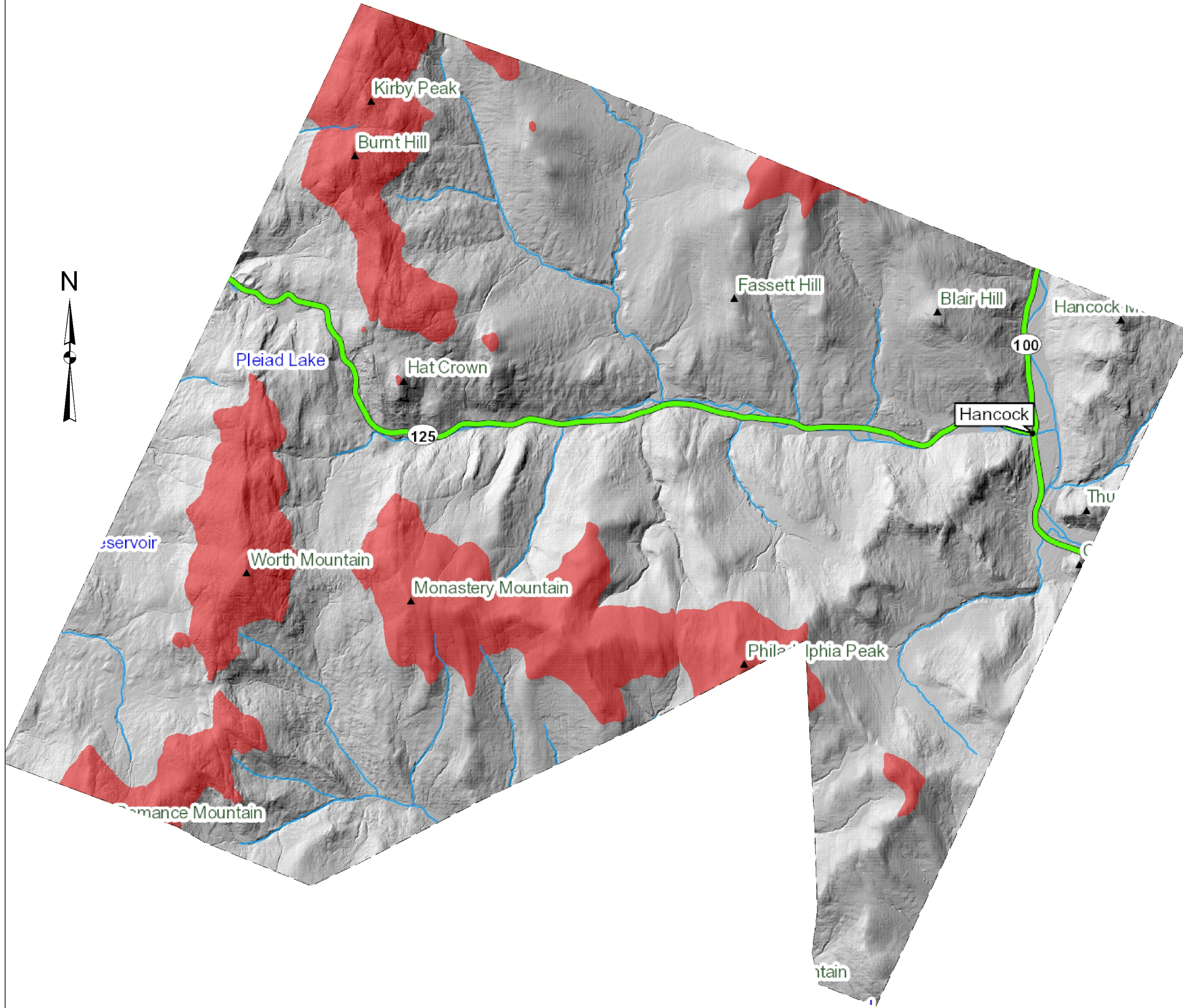
John Waddington: December 2018 (Map 3 of 10)

Spatial Reference: NAD83 StatePlane Vermont FIPS 4400

Sources: The primary data source was the Vermont Center for Geographic Information (VCGI) and the Vermont Open Geodata Portal. The layers downloaded include the VT State Base Map, the VT County and Town Boundaries, and the VT Lidar DEM (0.7m resolution).



Areas with Elevations Above 2,500 Ft (762 m) Within the TRORC Town of Hancock, Vermont

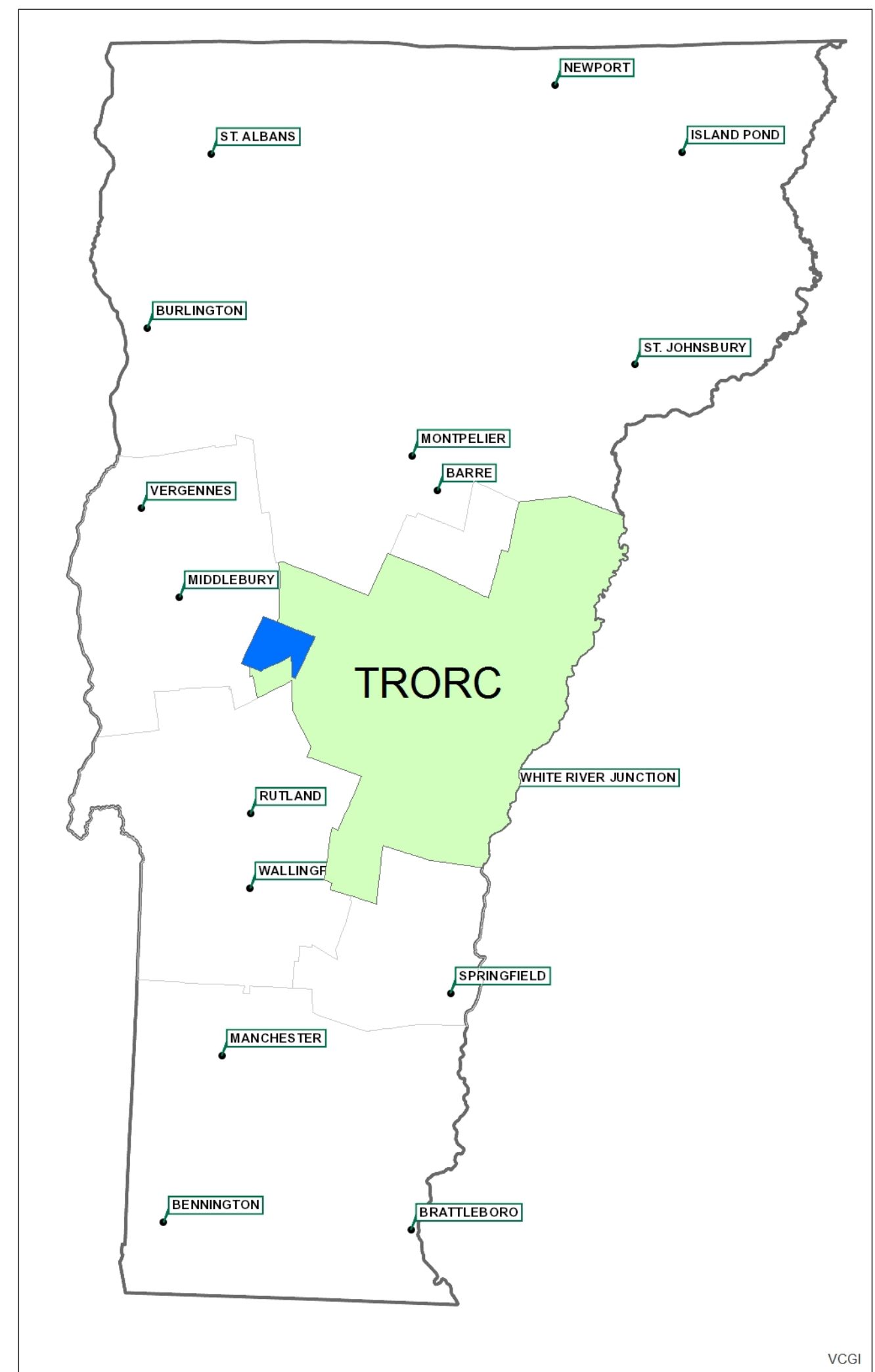
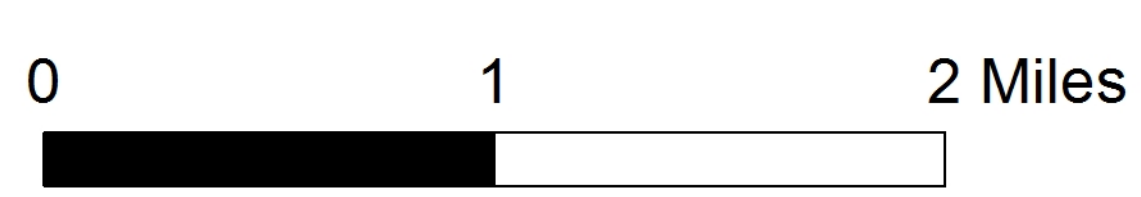


All areas within the Town of Hancock, VT with elevations above 2,500 ft (762 m) are highlighted in red. The Digital Elevation Model (DEM) for Hancock was extracted at a resolution of 3 m from the 0.7 m resolution Vermont LiDAR DEM.

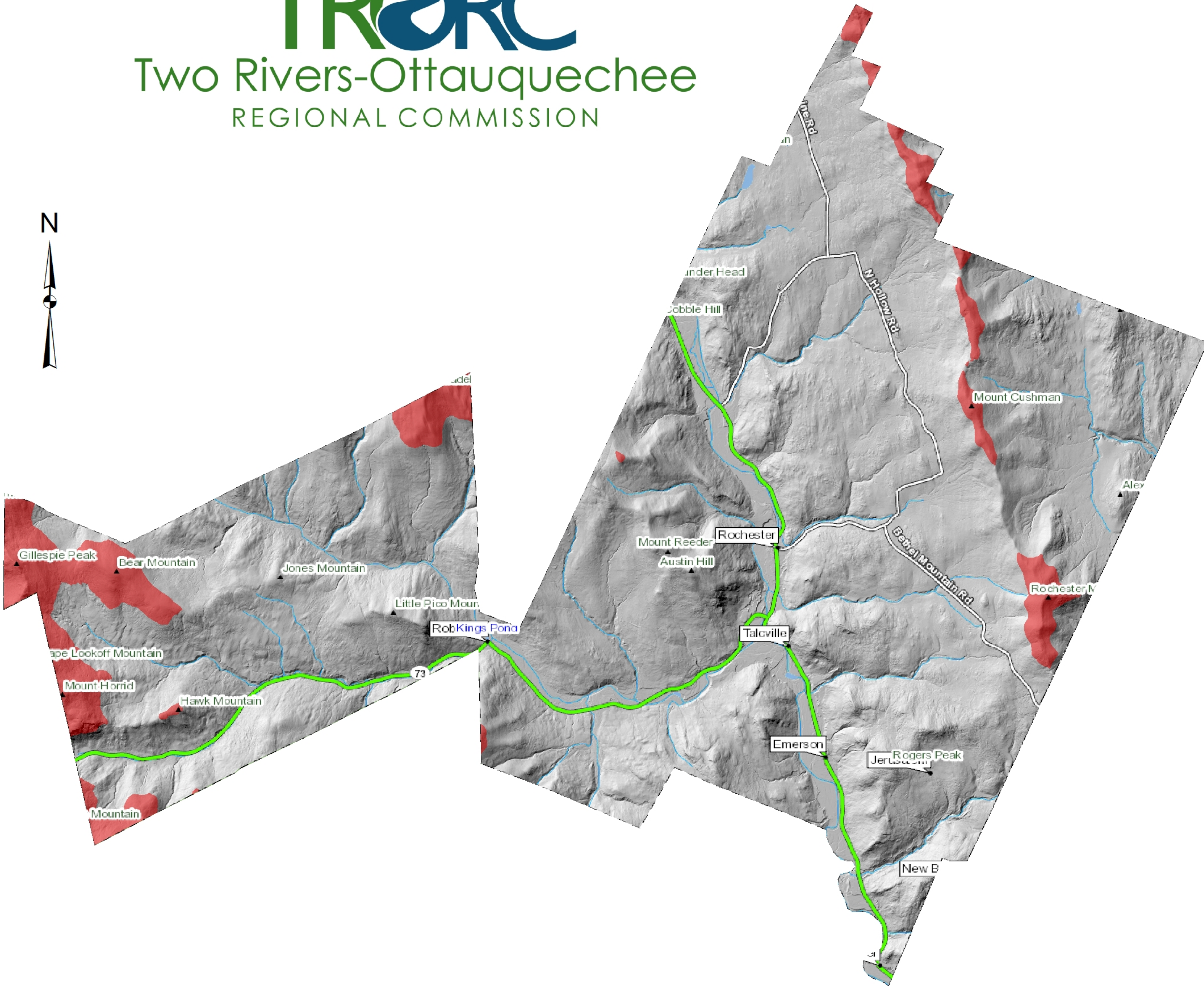
Total Hancock Area= 24,696 acres
 Area Above 2,500 ft= 4,147 acres

John Waddington: December 2018 (Map 4 of 10)
 Spatial Reference: NAD83 StatePlane Vermont FIPS 4400

Sources: The primary data source was the Vermont Center for Geographic Information (VCGI) and the Vermont Open Geodata Portal. The layers downloaded include the VT State Base Map, the VT County and Town Boundaries, and the VT Lidar DEM (0.7m resolution).

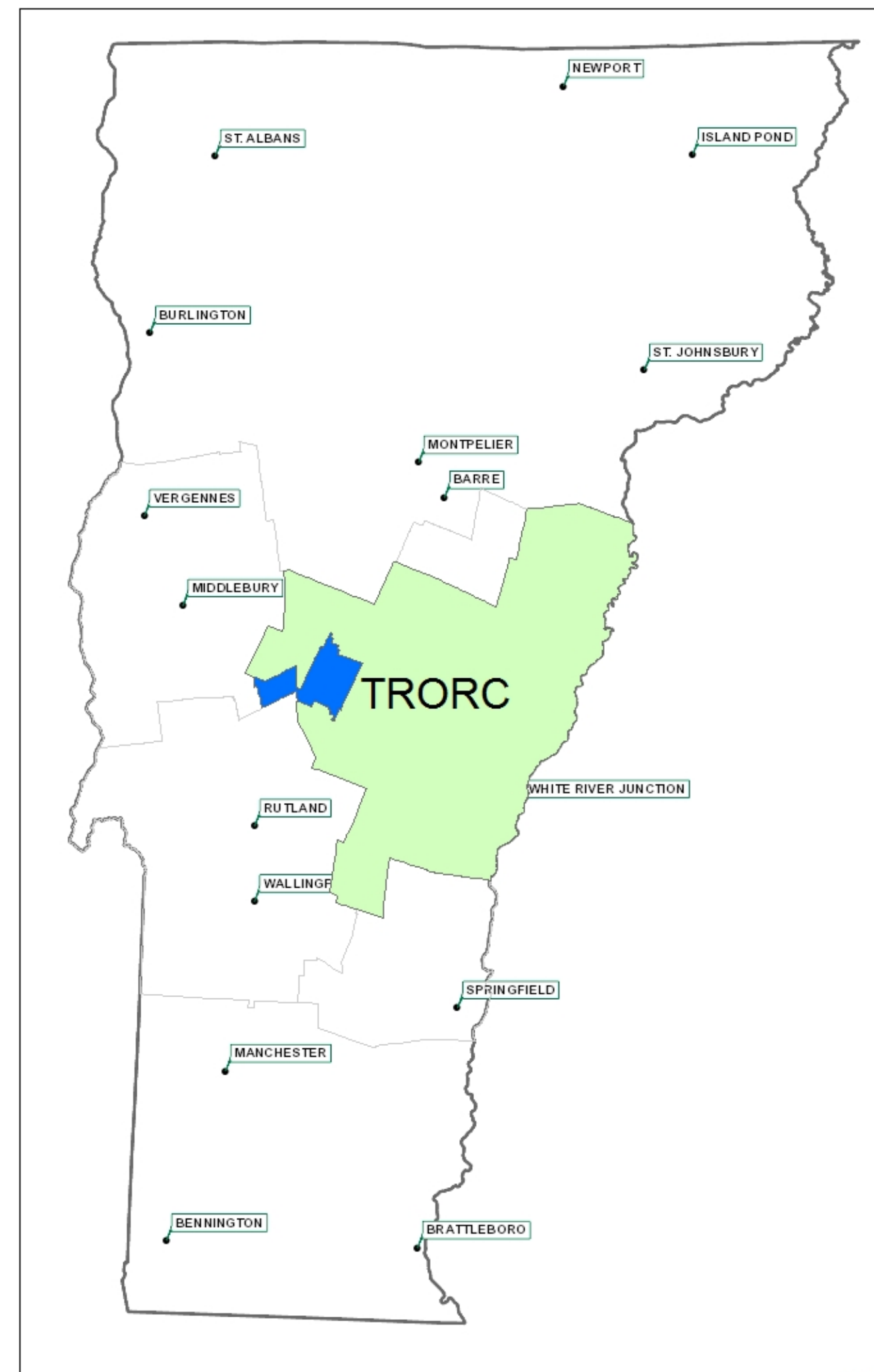


Areas with Elevations Above 2,500 Ft (762 m) Within the TRORC Town of Rochester, Vermont



All areas within the Town of Rochester, VT with elevations above 2,500 ft (762 m) are highlighted in red. The Digital Elevation Model (DEM) for Rochester was extracted at a resolution of 3 m from the 0.7 m resolution Vermont LiDAR DEM.

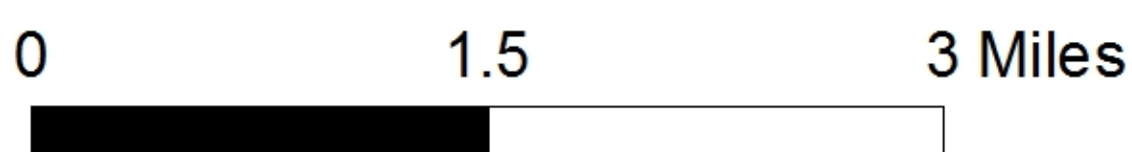
Total Rochester Area= 36,574 acres
 Area Above 2,500 ft= 2,252 acres



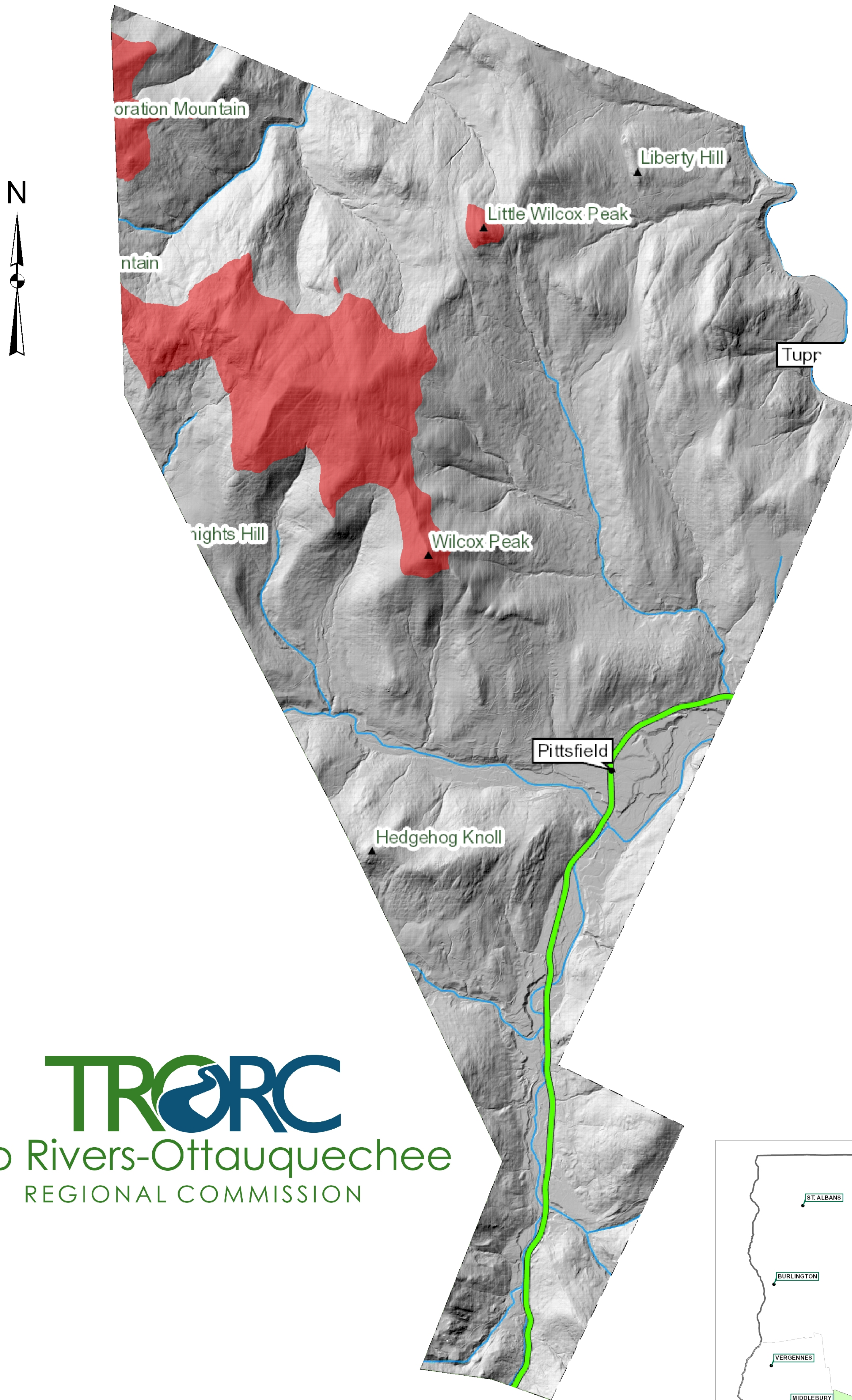
John Waddington: December 2018 (Map 5 of 10)

Spatial Reference: NAD83 StatePlane Vermont FIPS 4400

Sources: The primary data source was the Vermont Center for Geographic Information (VCGI) and the Vermont Open Geodata Portal. The layers downloaded include the VT State Base Map, the VT County and Town Boundaries, and the VT Lidar DEM (0.7m resolution).



Areas with Elevations Above 2,500 Ft (762 m) Within the TRORC Town of Pittsfield, Vermont



TRORC
 Two Rivers-Ottawaquechee
 REGIONAL COMMISSION

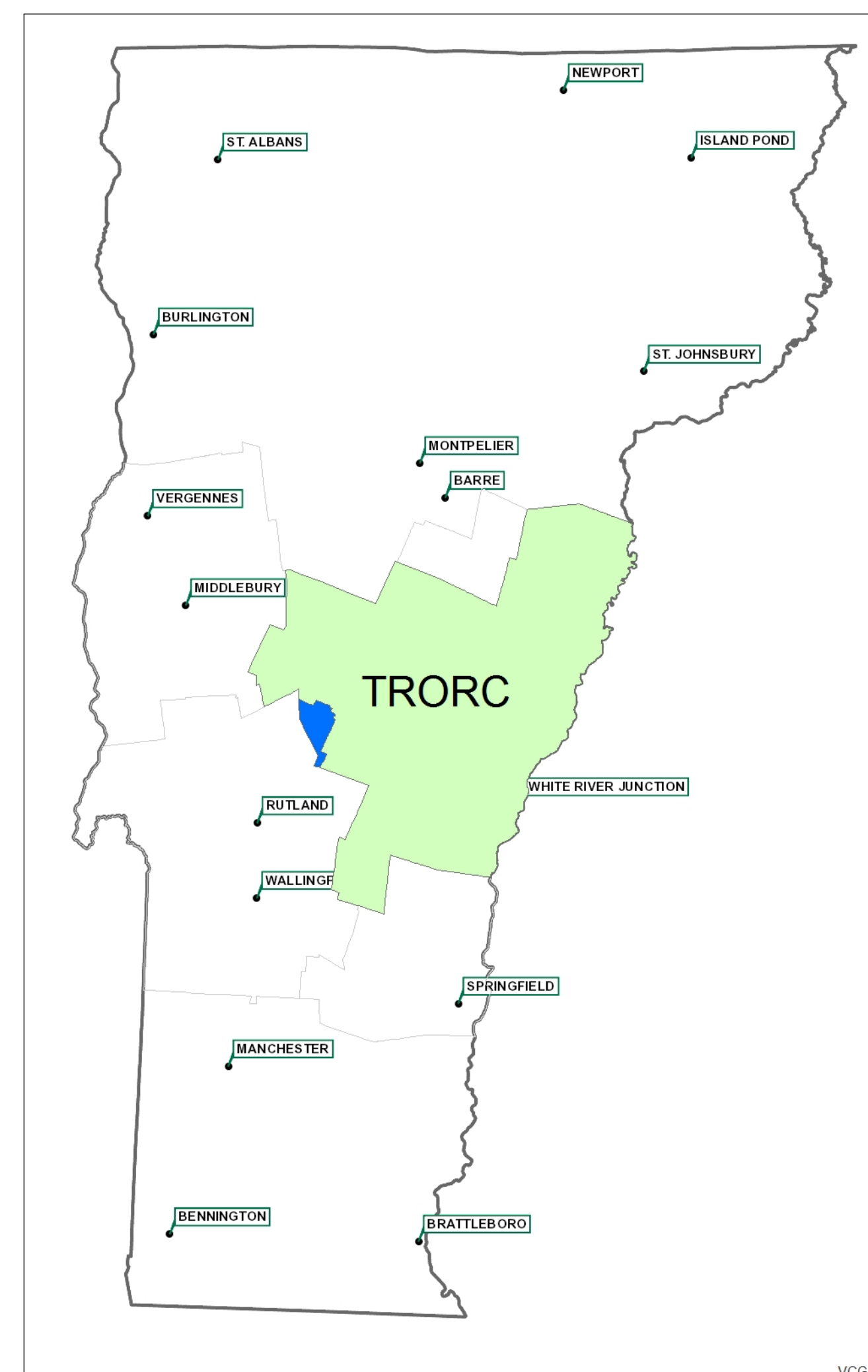
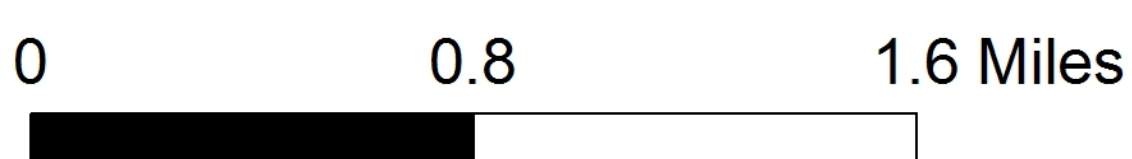
All areas within the Town of Pittsfield, VT with elevations above 2,500 ft (762 m) are highlighted in red. The Digital Elevation Model (DEM) for Pittsfield was extracted at a resolution of 3 m from the 0.7 m resolution Vermont LiDAR DEM.

Total Pittsfield Area= 13,148 acres
 Area Above 2,500 ft= 1,205 acres

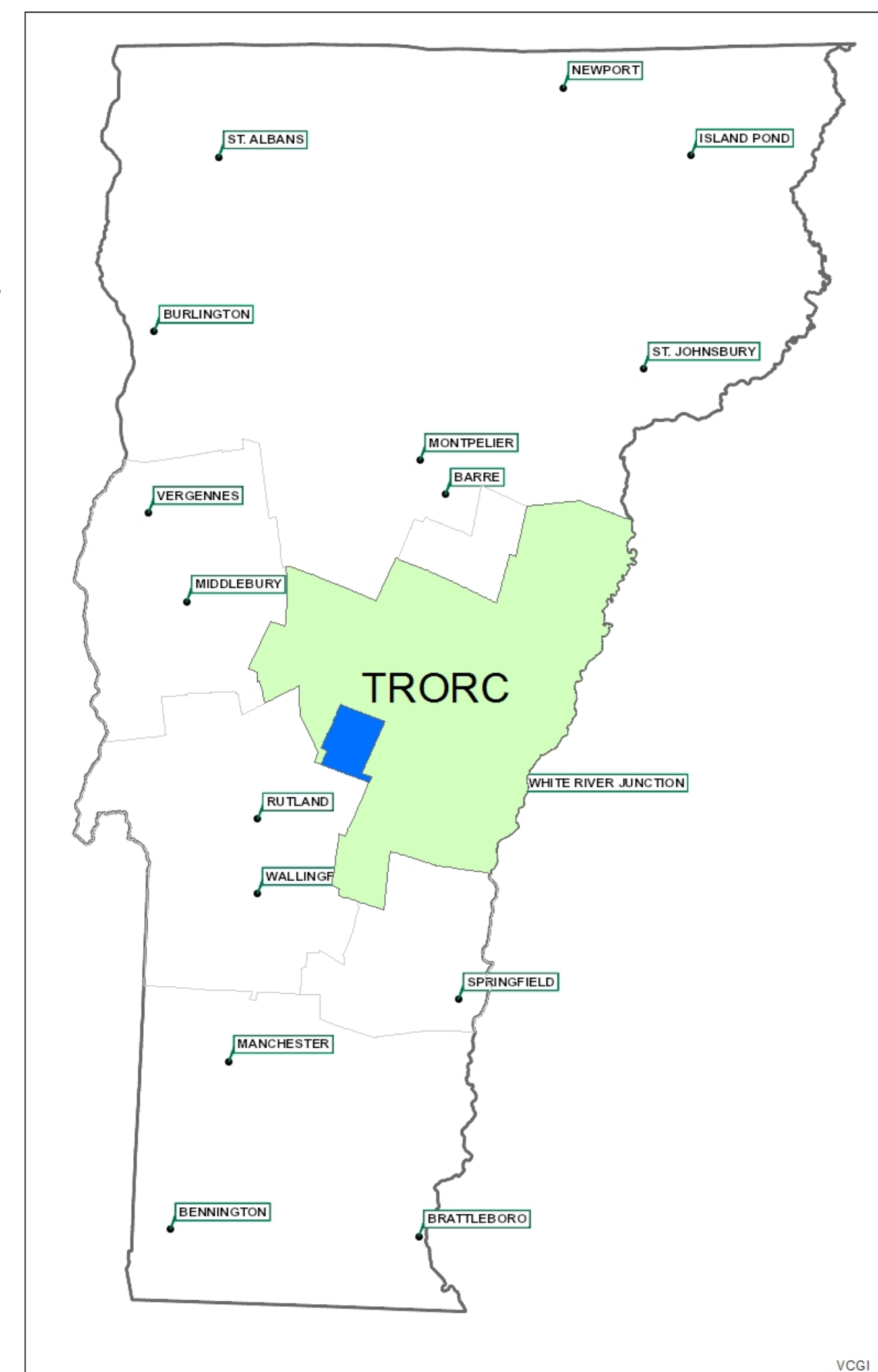
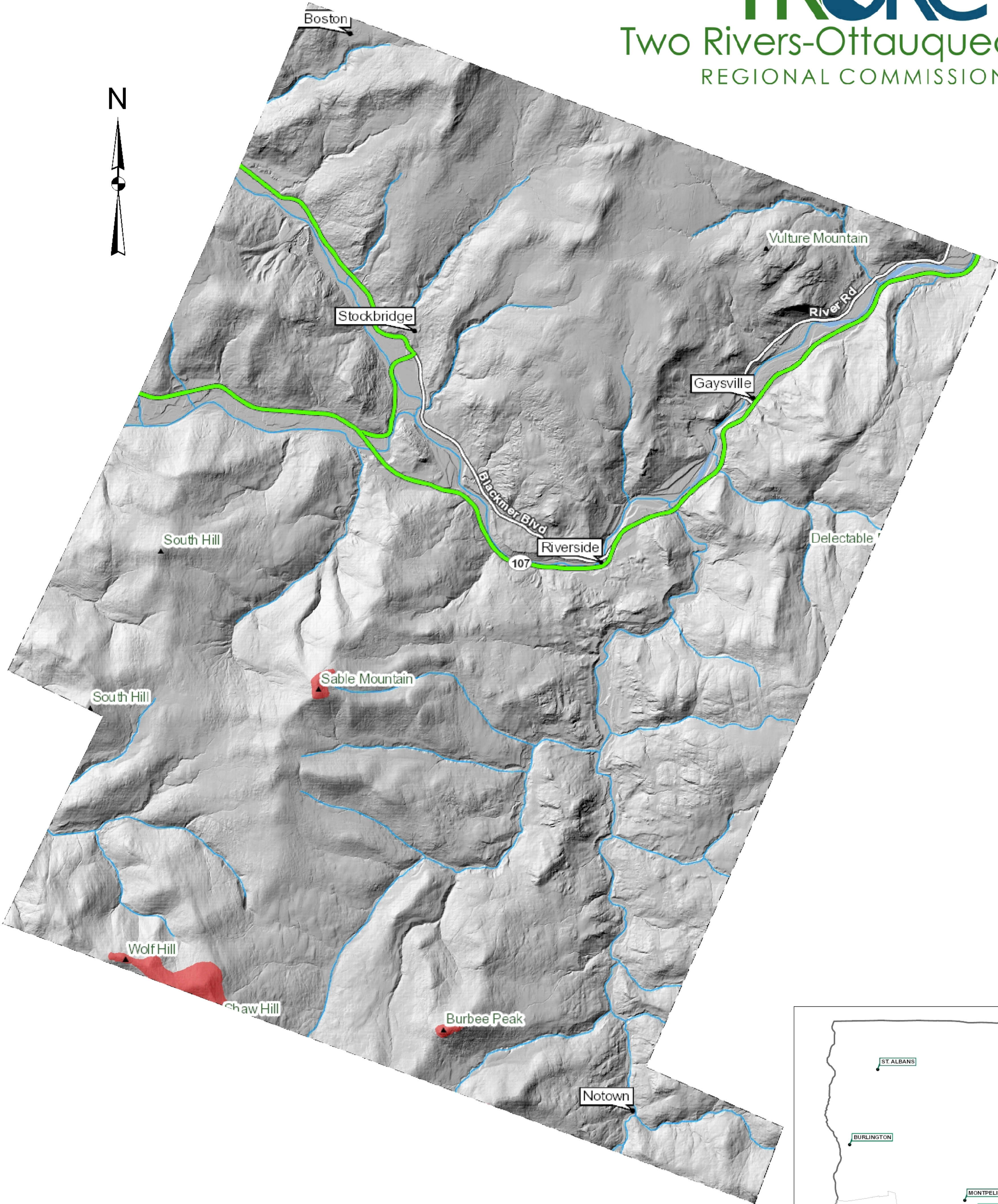
John Waddington: December 2018 (Map 6 of 10)

Spatial Reference: NAD83 StatePlane Vermont FIPS 4400

Sources: The primary data source was the Vermont Center for Geographic Information (VCGI) and the Vermont Open Geodata Portal. The layers downloaded include the VT State Base Map, the VT County and Town Boundaries, and the VT Lidar DEM (0.7m resolution).



Areas with Elevations Above 2,500 Ft (762 m) Within the TRORC Town of Stockbridge, Vermont



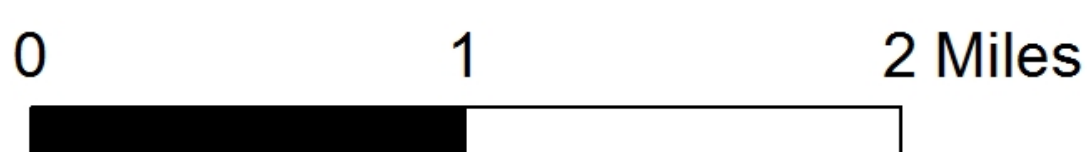
All areas within the Town of Stockbridge, VT with elevations above 2,500 ft (762 m) are highlighted in red. The Digital Elevation Model (DEM) for Stockbridge was extracted at a resolution of 3 m from the 0.7 m resolution Vermont LiDAR DEM.

Total Stockbridge Area= 29,470 acres
Area Above 2,500 ft= 135 acres

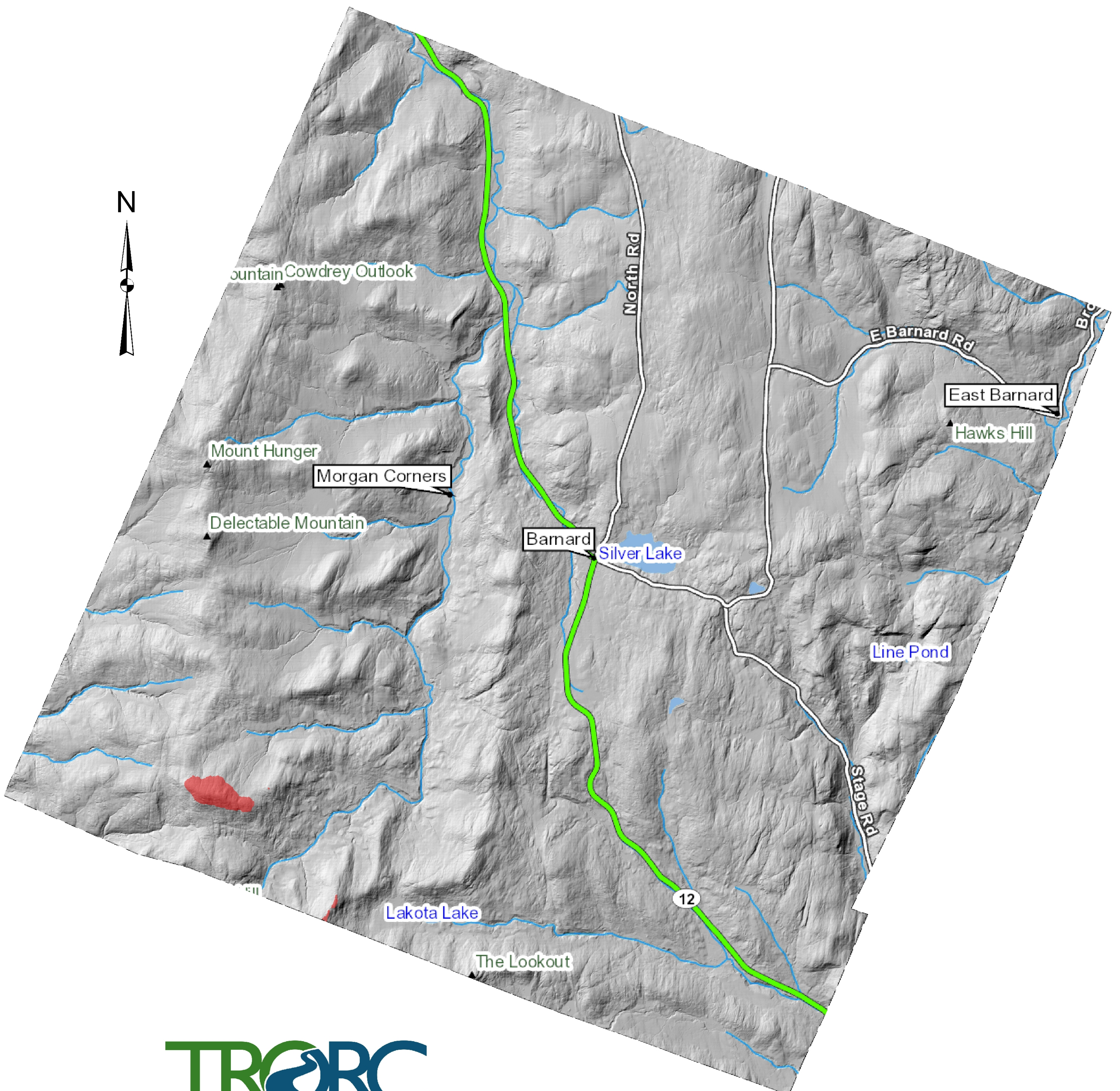
John Waddington: December 2018 (Map 7 of 10)

Spatial Reference: NAD83 StatePlane Vermont FIPS 4400

Sources: The primary data source was the Vermont Center for Geographic Information (VCGI) and the Vermont Open Geodata Portal. The layers downloaded include the VT State Base Map, the VT County and Town Boundaries, and the VT Lidar DEM (0.7m resolution).



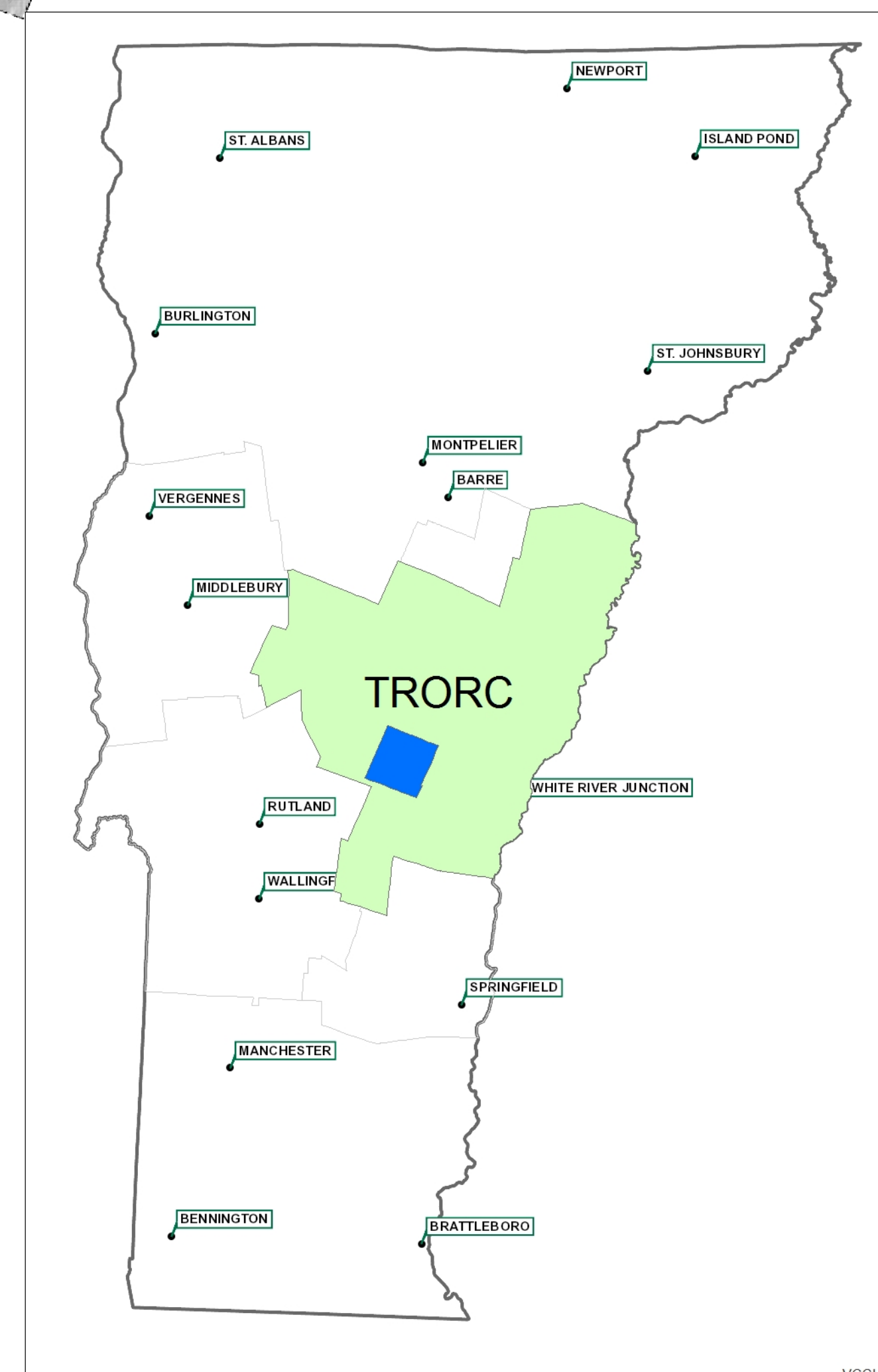
Areas with Elevations Above 2,500 Ft (762 m) Within the TRORC Town of Barnard, Vermont



TRORC
Two Rivers-Ottawaquechee
REGIONAL COMMISSION

All areas within the Town of Barnard, VT with elevations above 2,500 ft (762 m) are highlighted in red. The Digital Elevation Model (DEM) for Barnard was extracted at a resolution of 3 m from the 0.7 m resolution Vermont LiDAR DEM.

Total Barnard Area= 30,891 acres
Area Above 2,500 ft= 69 acres



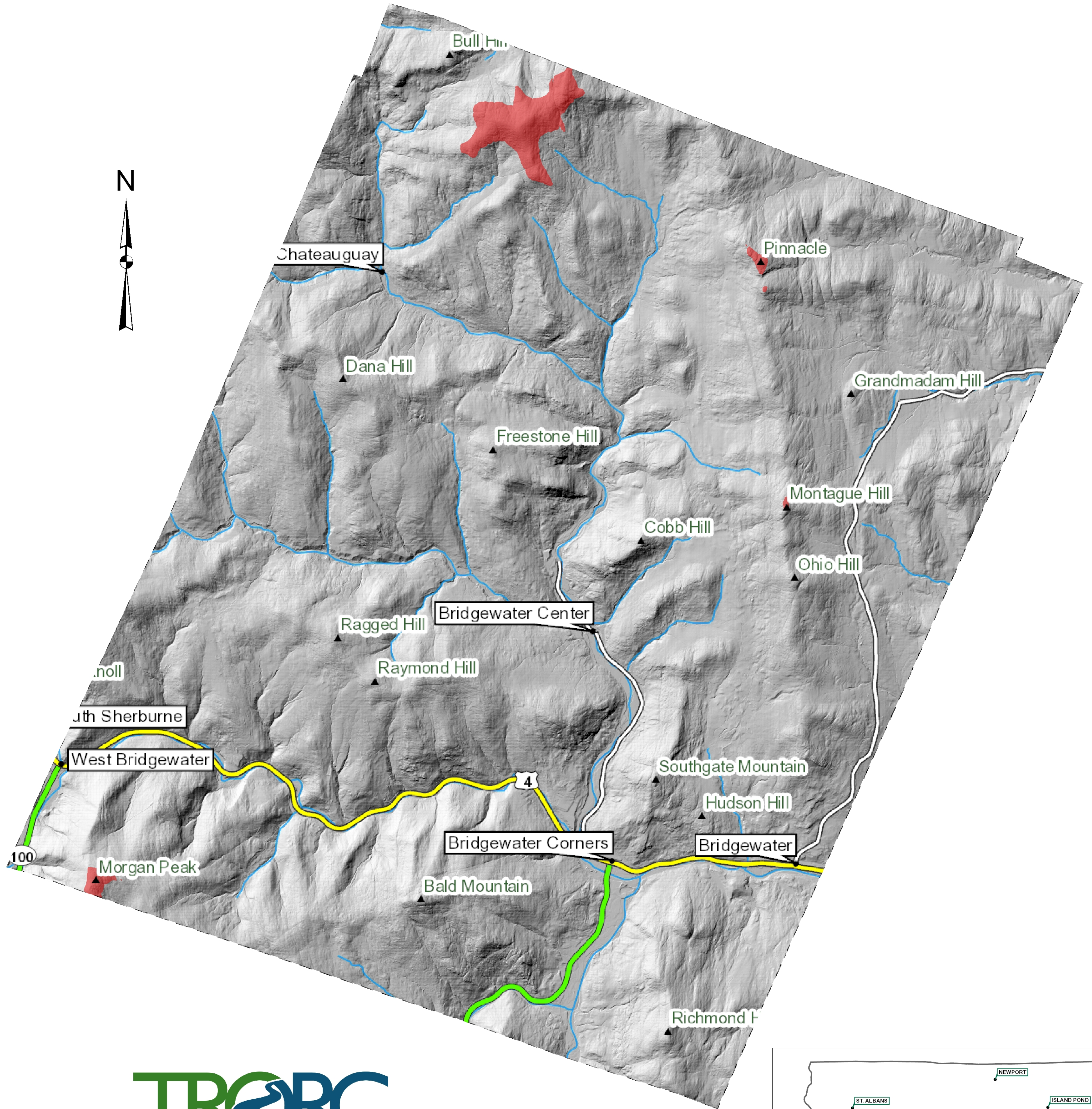
John Waddington: December 2018 (Map 8 of 10)

Spatial Reference: NAD83 StatePlane Vermont FIPS 4400

Sources: The primary data source was the Vermont Center for Geographic Information (VCGI) and the Vermont Open Geodata Portal. The layers downloaded include the VT State Base Map, the VT County and Town Boundaries, and the VT Lidar DEM (0.7m resolution).

0 1 2 Miles

Areas with Elevations Above 2,500 Ft (762 m) Within the TRORC Town of Bridgewater, Vermont



TRORC
 Two Rivers-Ottawaquechee
 REGIONAL COMMISSION

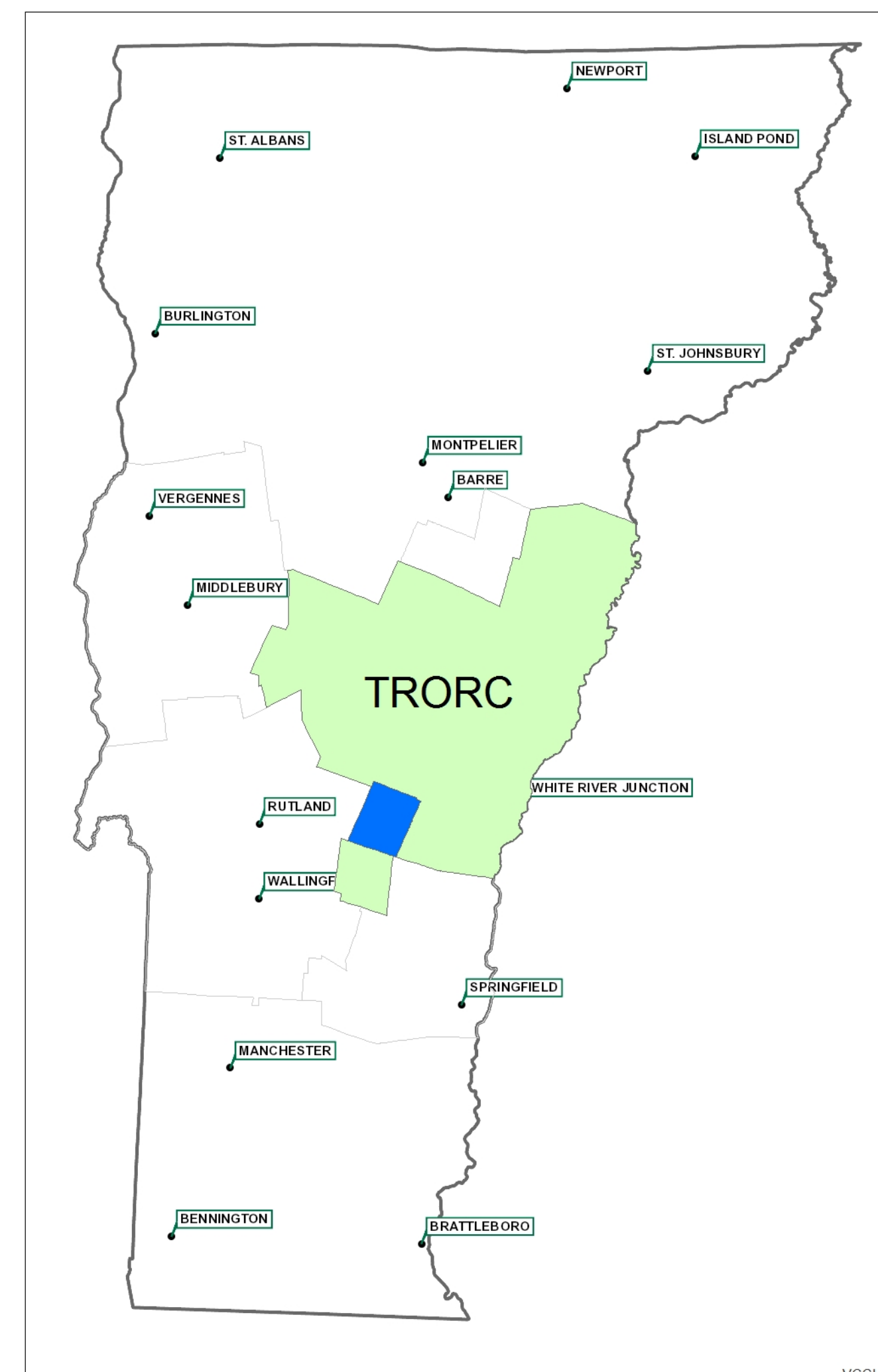
All areas within the Town of Bridgewater, VT with elevations above 2,500 ft (762 m) are highlighted in red. The Digital Elevation Model (DEM) for Bridgewater was extracted at a resolution of 3 m from the 0.7 m resolution Vermont LiDAR DEM.

Total Bridgewater Area= 31,753 acres
 Area Above 2,500 ft= 302 acres

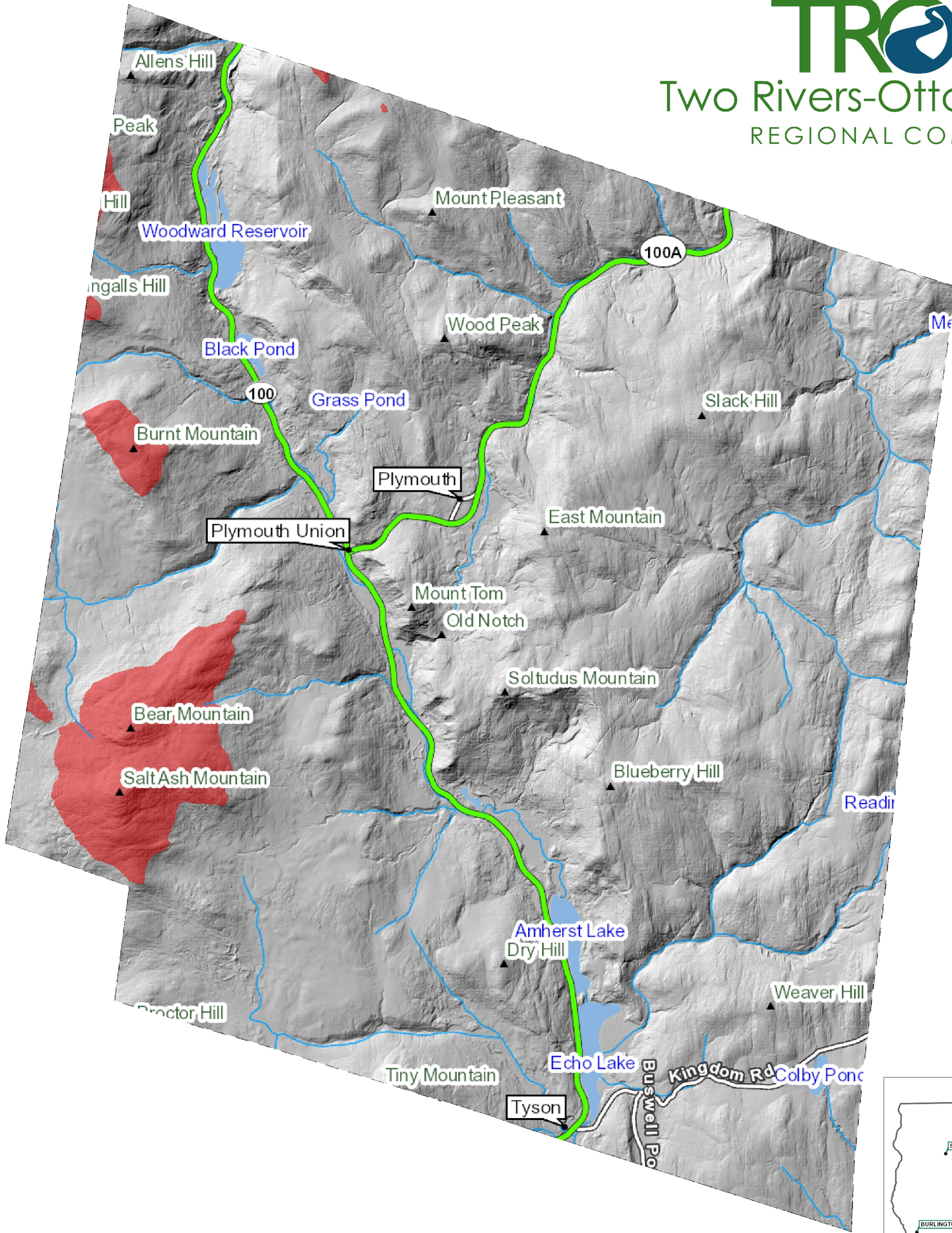
John Waddington: December 2018 (Map 9 of 10)

Spatial Reference: NAD83 StatePlane Vermont FIPS 4400

Sources: The primary data source was the Vermont Center for Geographic Information (VCGI) and the Vermont Open Geodata Portal. The layers downloaded include the VT State Base Map, the VT County and Town Boundaries, and the VT Lidar DEM (0.7m resolution).

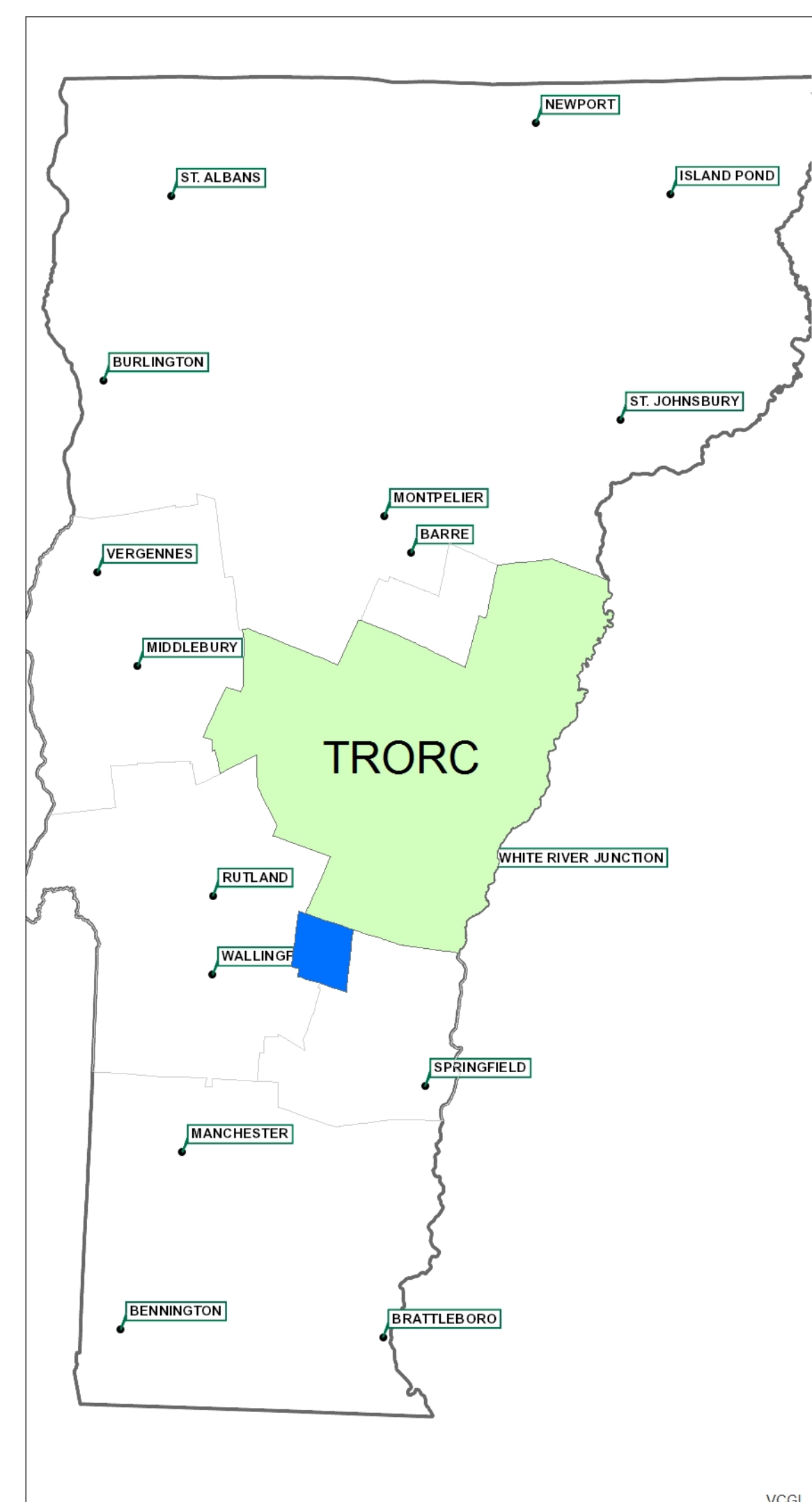


Areas with Elevations Above 2,500 Ft (762 m) Within the TRORC Town of Plymouth, Vermont



All areas within the Town of Plymouth, VT with elevations above 2,500 ft (762 m) are highlighted in red. The Digital Elevation Model (DEM) for Plymouth was extracted at a resolution of 3 m from the 0.7 m resolution Vermont LiDAR DEM.

Total Plymouth Area= 31,480 acres
 Area Above 2,500 ft= 1,392 acres



John Waddington: December 2018 (Map 10 of 10)

Spatial Reference: NAD83 StatePlane Vermont FIPS 4400

Sources: The primary data source was the Vermont Center for Geographic Information (VCGI) and the Vermont Open Geodata Portal. The layers downloaded include the VT State Base Map, the VT County and Town Boundaries, and the VT Lidar DEM (0.7m resolution).

