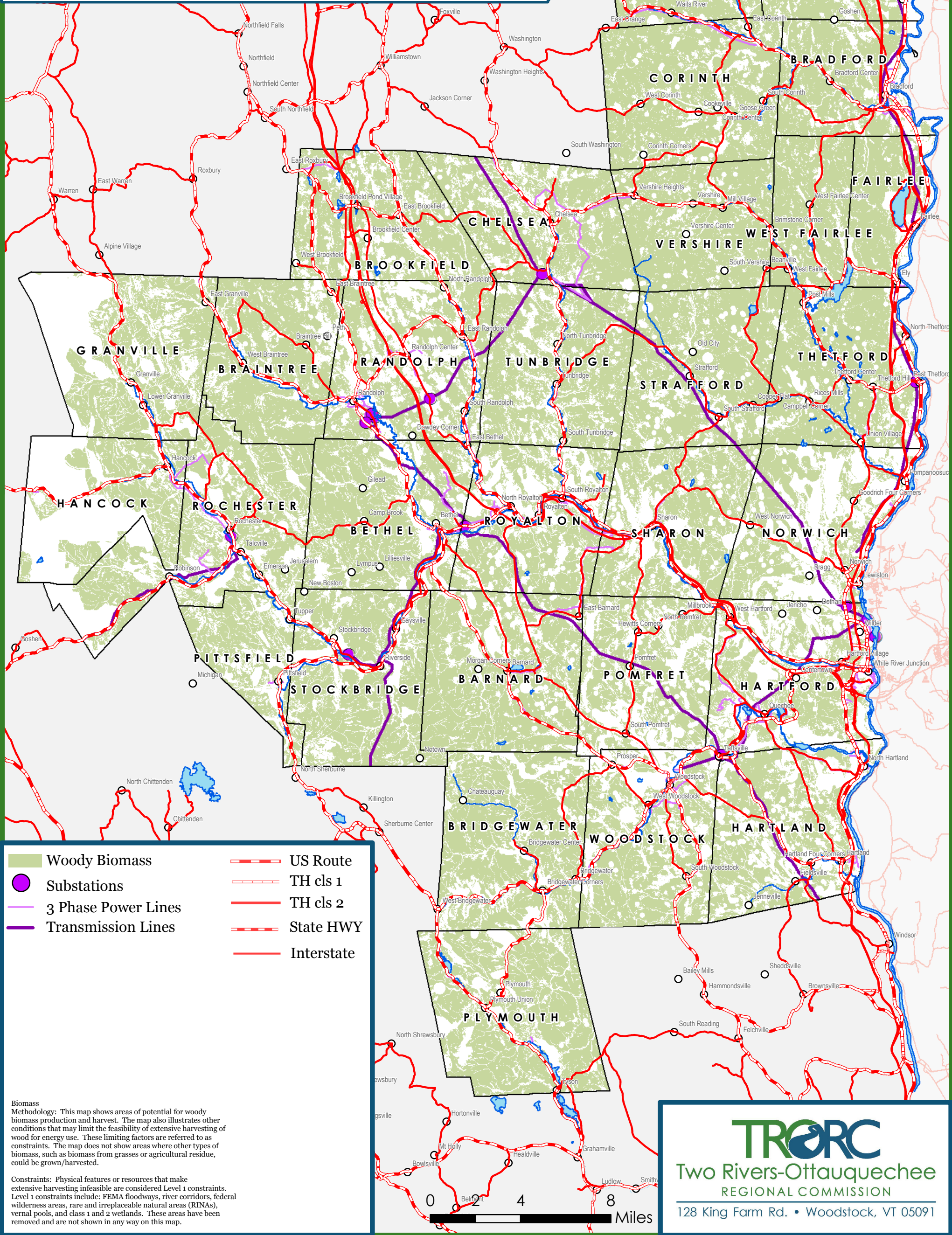


Two Rivers-Ottauquechee Region of Vermont

Biomass Energy Potential

Woody Biomass

Map 12 of 14
2020 Regional Plan
Adopted July 15, 2020, Effective August 19, 2020



Biomass Methodology: This map shows areas of potential for woody biomass production and harvest. The map also illustrates other conditions that may limit the feasibility of extensive harvesting of wood for energy use. These limiting factors are referred to as constraints. The map does not show areas where other types of biomass, such as biomass from grasses or agricultural residue, could be grown/harvested.

Constraints: Physical features or resources that make extensive harvesting infeasible are considered Level 1 constraints. Level 1 constraints include: FEMA floodways, river corridors, federal wilderness areas, rare and irreplaceable natural areas (RINAs), vernal pools, and class 1 and 2 wetlands. These areas have been removed and are not shown in any way on this map.

TRORC
Two Rivers-Ottauquechee
REGIONAL COMMISSION

128 King Farm Rd. • Woodstock, VT 05091