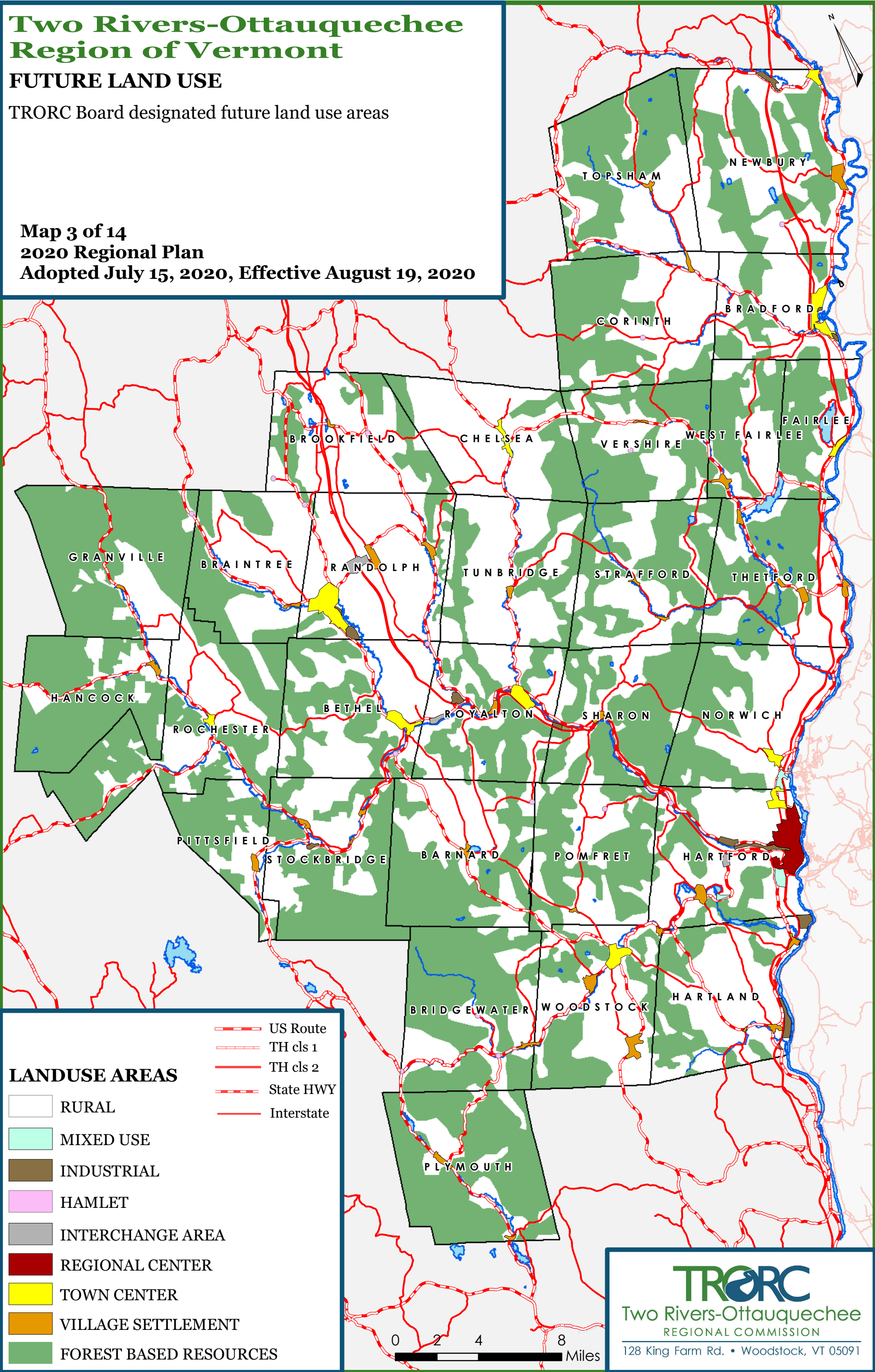


Two Rivers-Ottauquechee Region of Vermont

FUTURE LAND USE

TRORC Board designated future land use areas

Map 3 of 14
 2020 Regional Plan
 Adopted July 15, 2020, Effective August 19, 2020



LANDUSE AREAS

- RURAL
- MIXED USE
- INDUSTRIAL
- HAMLET
- INTERCHANGE AREA
- REGIONAL CENTER
- TOWN CENTER
- VILLAGE SETTLEMENT
- FOREST BASED RESOURCES

- US Route
- TH cls 1
- TH cls 2
- State HWY
- Interstate



TRORC
 Two Rivers-Ottauquechee
 REGIONAL COMMISSION
 128 King Farm Rd. • Woodstock, VT 05091