

**Appendix A – Zoning Maps**

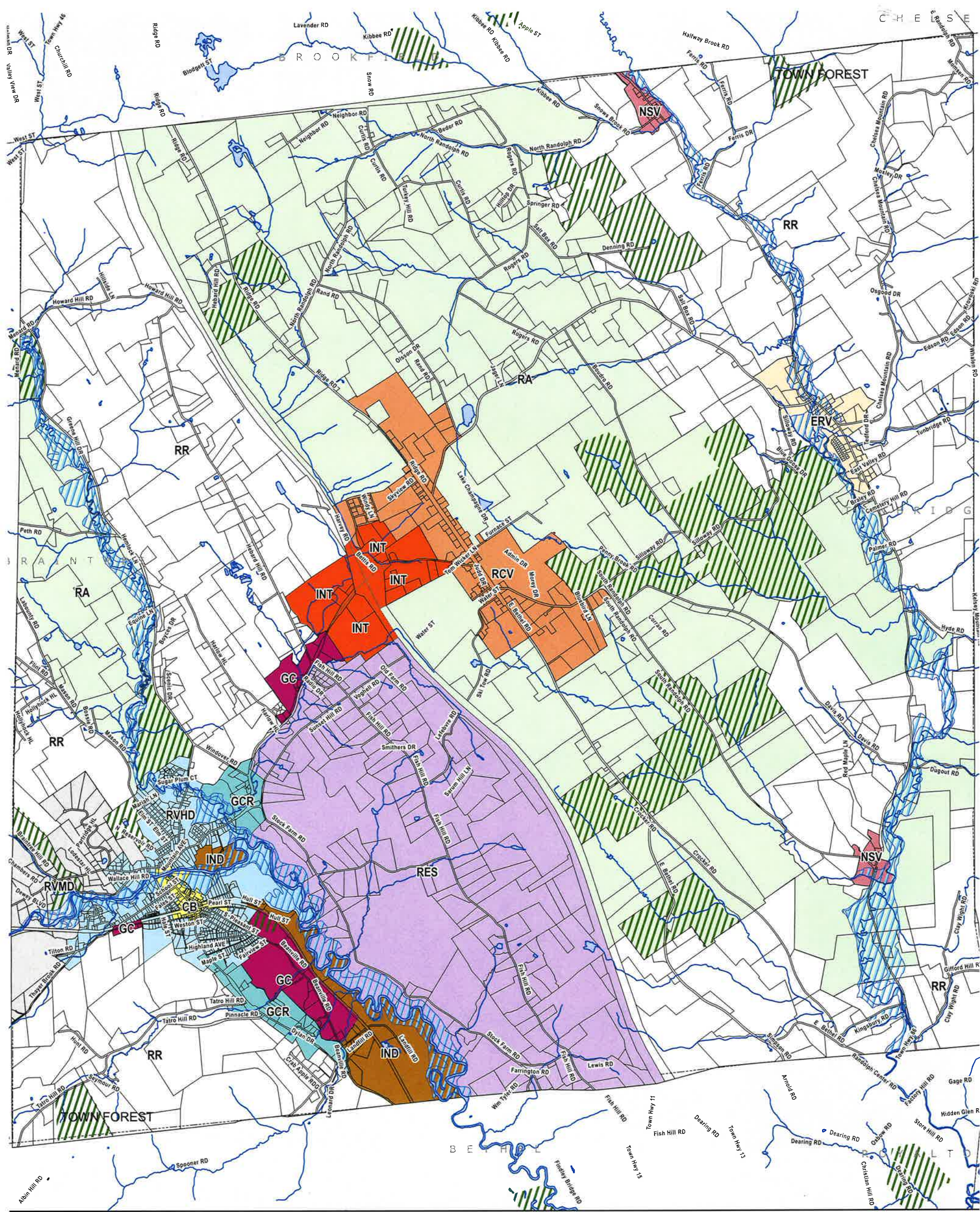
Zoning Map – Town

Zoning Map – Village (Inset)

INT Districts' Map – Regulatory Provisions

INT Districts' Map – Agricultural Soils

RCO District Map



**Zoning**  
 Randolph, Vermont  
 Effective August 2, 2018

**Town**

1:41,000  
 1 inch = 3,417 feet  
 0 0.5 1  
 Miles



CB	NSV
ERV	RA
GC	RCV
GCR	RES
IND	RR
INT	RVHD
FPO	RVMD

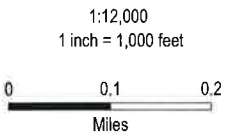
(not shown) WCO

**Other (non-regulatory)**

Parcels	surface water
Conserved Lands	

**Zoning**  
**Randolph, Vermont**  
**Effective August 2, 2018**

**Village**

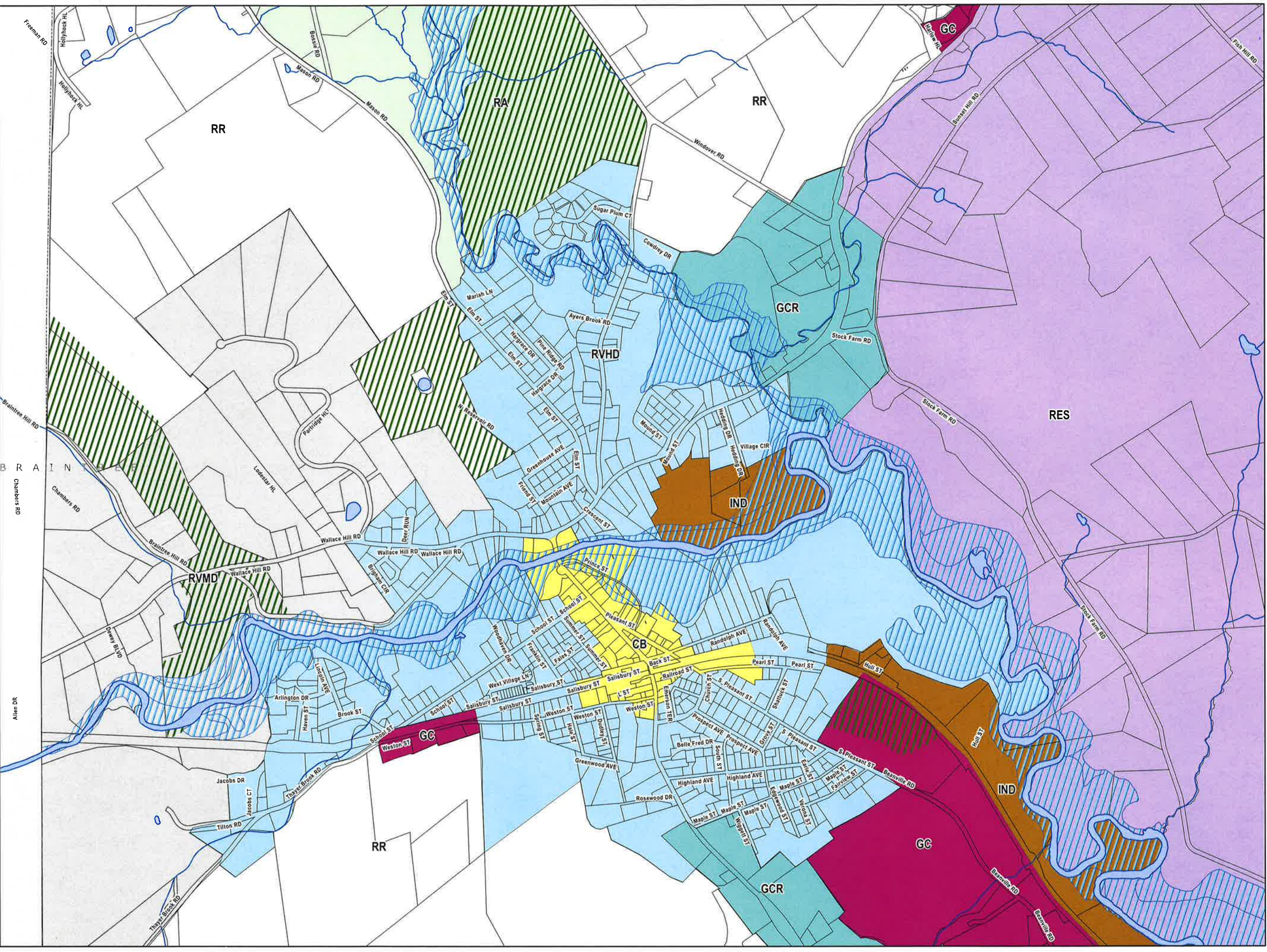


	CB		NSV
	ERV		RA
	GC		RCV
	GCR		RES
	IND		RR
	INT		RVHD
	FPO		RVMD

(not shown) WCO

**Other (non-regulatory)**







	Parcels		surface water
	Conserved Lands		



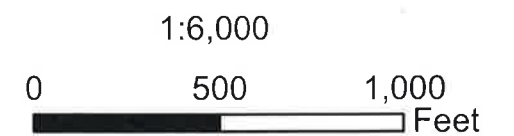


# INT Districts Regulatory Provisions

Effective November 8, 2016

-  scenic view area
-  parcels
-  district boundaries
-  surface water
-  170FT road setback
-  regulatory contours  
1080 1100 1320

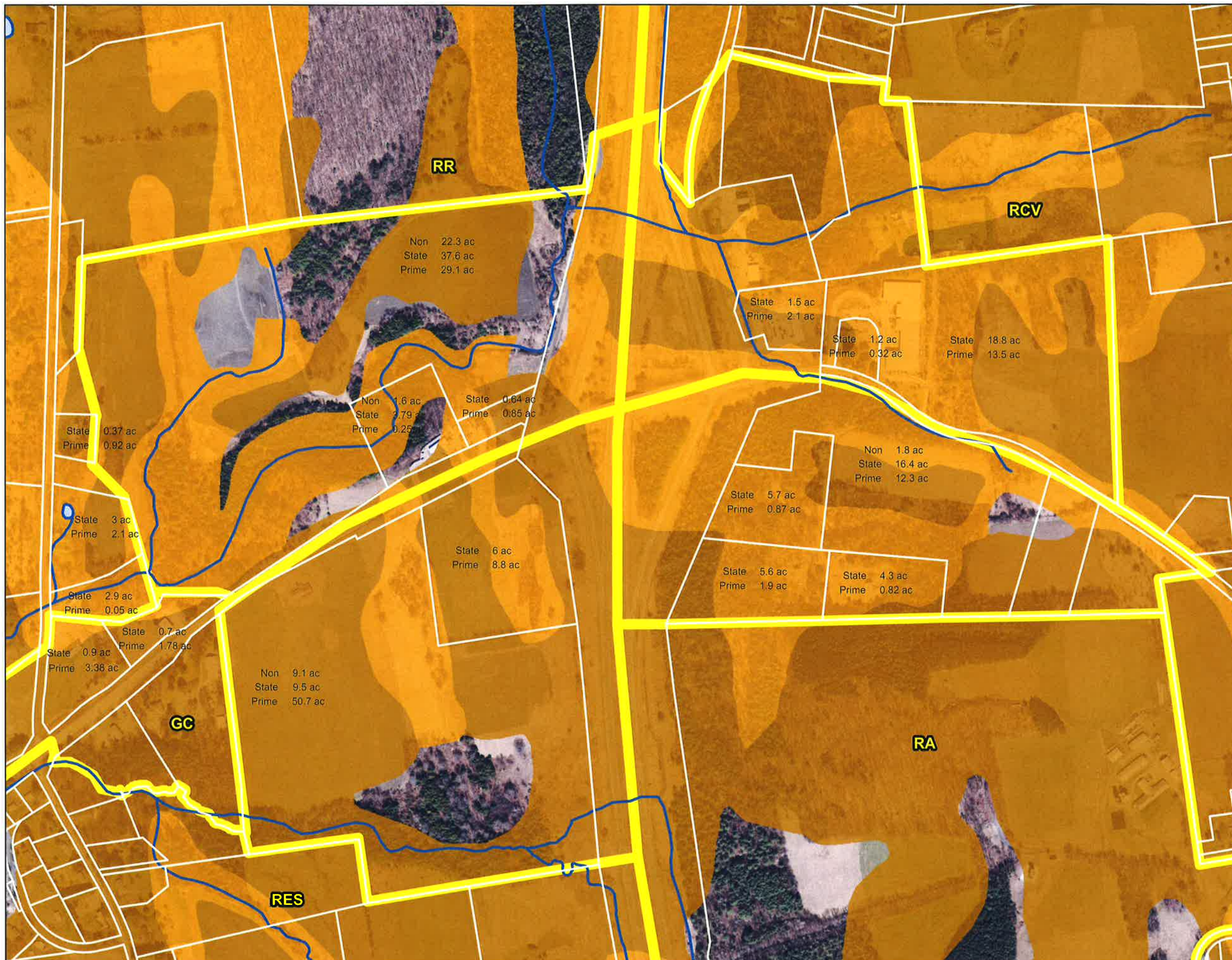
Tax parcels are shown for reference.



# INT Districts

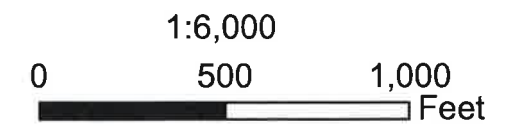
## Agricultural Soils

Effective November 8, 2016







- parcels
- surface water
- district boundaries
- prime agriculture
- statewide agriculture

Tax parcels and wetlands are shown for reference.



# Randolph Center Overlay (RCO) District Map

Effective November 8, 2016

-  RCO overlay
-  parcels
-  district boundaries
-  surface water

Tax parcels are shown for reference.

