

# **HARTLAND 3 CORNERS INTERSECTION STP BP19(2)**

**RITA SETO, SENIOR PLANNER**

**TWO RIVERS-OTTAUQUECHEE REGIONAL COMMISSION**

# TOWN OF HARTLAND STATS

- **Approx. 3446 pop'n (2020 Census)**
- **Villages of North Hartland, Hartland (3 Corners) and 4 Corners**
- **3 Corners (intersection of US5 and VT12)**
- **Gateway from Exit 9, I-91**
- **Connecticut River Scenic Byway Route (US5)**
- **Historic Civil War monument to be relocated**



Historical Society

Yellow Rd

Law Office of  
Maureen Martin

Quechee Rd

Durphy Rd

Hartland  
Treasurer's Office

12

Mascoma Bank

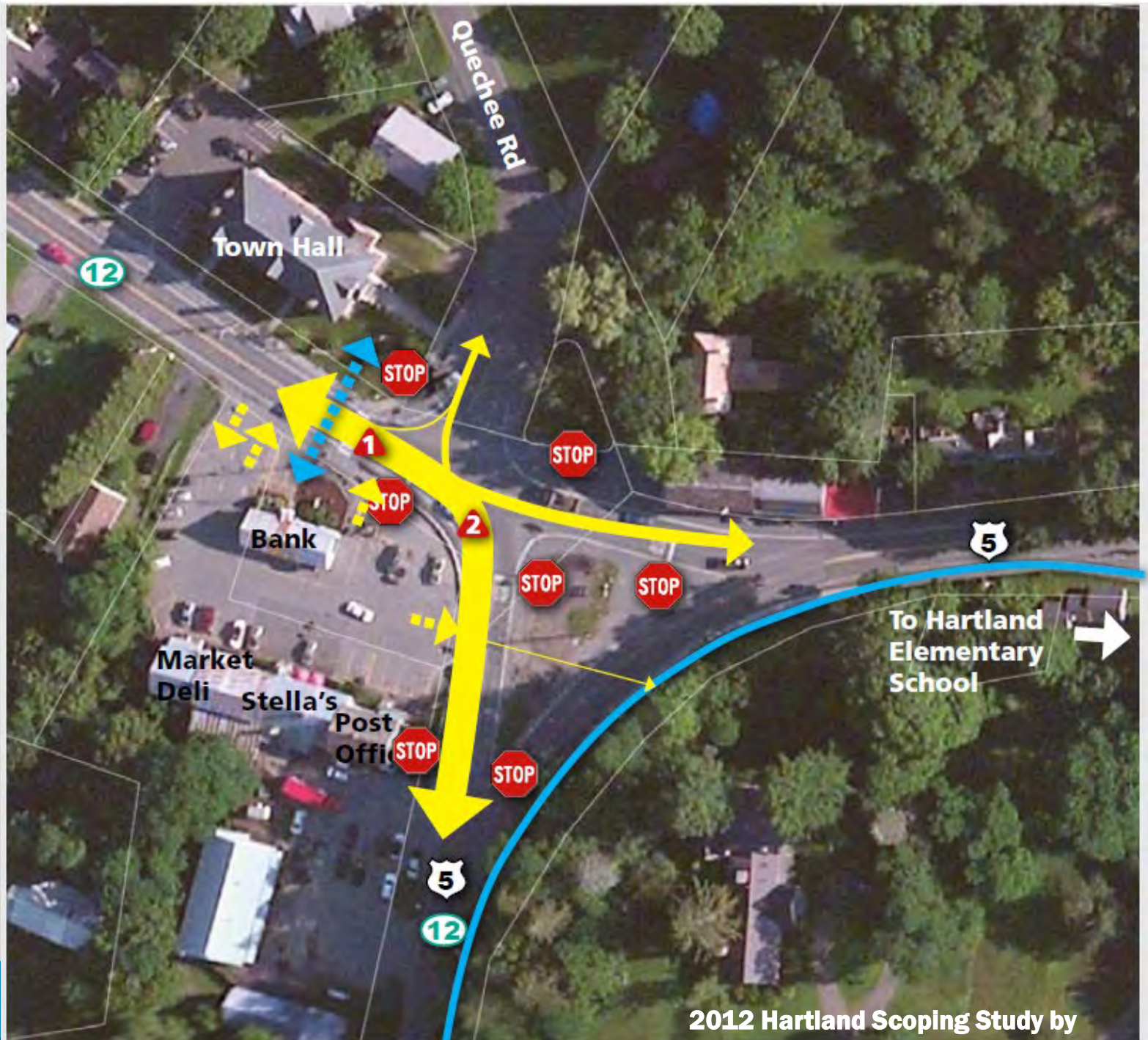
5

The Hartland Diner

Hartland Hair Express

5

Farmers Market



2012 Hartland Scoping Study by  
BSG

# PREFERRED ALTERNATIVE: 4 WAY INTERSECTION



# PROJECT CHALLENGES

- **Town puts town manager on admin leave, MPM role shifts to include PIO and utility coordinator**
- **Notts Excavating begins 2<sup>nd</sup> week of June with burying conduit, complicated with GMP and 3 telecom layouts**
- **Project phases:**
  - **Bury utility conduits**
  - **Relocation of civil war monument**
  - **Grinding US5 to prepare for paving**
  - **Setting curbing**
  - **Sidewalk pours**
  - **Landscaping**
  - **Utility relocation – on GMP, VTel, First Light, Comcast**

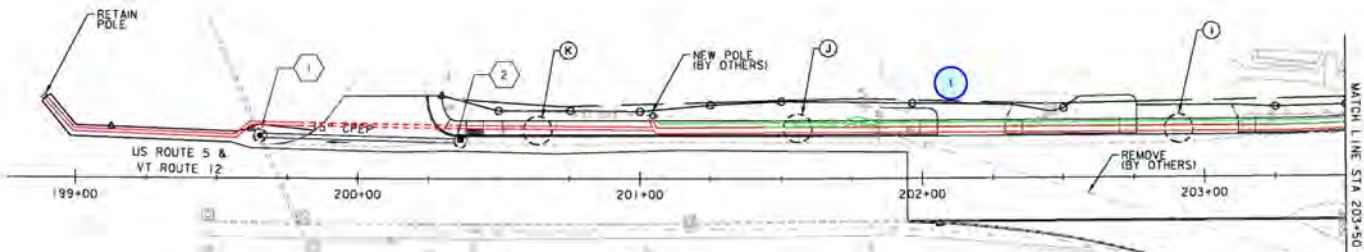
**DRAINAGE NOTES**

1 STA. 199+65.0, 15.0' LT.  
 CONST. DM OVER EXIST 12" CMP  
 15" INV. IN (2) = 575.25  
 12" INV. IN (EXIST.) = 573.2  
 12" INV. OUT (EXIST.) = 572.9  
 TOP OF COVER = 581.8

2 STA. 200+36.4, 14.0' LT. - STA. 199+65.0, 15.0' LT.  
 CONST. 68 LF X 15" CP (P/SL)  
 CONST. RCDI-TYPE D GRATE, +36.4, 14.0' LT.  
 15" INV. OUT (I) = 578.00  
 TOP OF GRATE = 582.84

**ELECTRIC / TEL.COM DUCT BANK KEY**

<b>A</b>	EL TEL 1-3" 4-3" 1-5" VTEL/COMCAST FIRST LIGHT/SPARE	<b>F</b>	EL TEL 1-0" 6-4" VTEL/COMCAST FIRST LIGHT/SPARE SPARE/SPARE	<b>J</b>	EL TEL 2-0" 4-4" VTEL/COMCAST FIRST LIGHT/SPARE
<b>B</b>	EL TEL 1-0" 2-2" VTEL/COMCAST	<b>G</b>	EL TEL 1-0" 2-2" VTEL/COMCAST	<b>K</b>	EL TEL 1-0" 2-2" VTEL/COMCAST
<b>C</b>	EL TEL 1-0" 2-2" 4-3" VTEL/COMCAST FIRST LIGHT/SPARE	<b>H</b>	EL TEL 1-3" 2-2" 2-0" 4-4" VTEL/COMCAST FIRST LIGHT/SPARE	<b>L</b>	EL TEL 1-3" 2-2" 6-4" VTEL/COMCAST FIRST LIGHT/SPARE SPARE/SPARE
<b>D</b>	EL TEL 2-3" 6-4" VTEL/COMCAST FIRST LIGHT/SPARE SPARE/SPARE	<b>I</b>	EL TEL 2-0" 2-2" 4-4" VTEL/COMCAST FIRST LIGHT/SPARE	<b>M</b>	EL TEL 2-3" 2-2" 6-4" VTEL/COMCAST FIRST LIGHT/SPARE SPARE/SPARE
<b>E</b>	EL TEL 2-0" 6-4" VTEL/COMCAST FIRST LIGHT/SPARE SPARE/SPARE				



**UTILITY LEGEND**

- PROPOSED GMP ELECTRIC CONDUIT
- PROPOSED TELECOMMUNICATIONS CONDUIT
- - - PROPOSED CONCRETE ENCASED GMP ELECTRIC CONDUIT
- - - PROPOSED CONCRETE ENCASED TELECOMMUNICATIONS CONDUIT

EL = ELECTRIC  
 TEL = TELECOMMUNICATIONS

DATE	DESCRIPTION
8/17/2023	RECONFIGURED PROPOSED UNDERGROUND UTILITY LAYOUT



PROJECT NAME: HARTLAND	PLOT DATE: 6/7/2023
PROJECT NUMBER: STP BP19(2)	DRAWN BY: C.K. FORD
FILE NAME: 577908DR_UT.dgn	CHECKED BY: D.M. PECK
PROJECT LEADER: D.M. PECK	SHEET 23 OF 56
DESIGNED BY: C.K. FORD	DRAINAGE AND UTILITY LAYOUT 11 OF 21

**SPECIAL PROVISION (TELECOM VAULT)**

STA. 204+03, RT (3)  
STA. 101+24, RT



**SPECIAL PROVISION (K30.5 TRANSFORMER VAULT)**

STA. 103+07, RT

**DRAINAGE NOTES**

- 3 STA. 204+08.2, 14.5' RT.  
CONST. RCDI-TYPE D GRATE OVER EXIST. PIPE  
15" INV. IN (4) = 580.35  
15" INV. OUT (EXIST.) = 580.3  
TOP OF GRATE = 583.90  
REMOVE EXIST. DI, 204+09, 19' RT. (SUBSIDIARY)
- 4 STA. 103+19.2, 15.6' RT. - STA. 204+08.2, 14.5' RT.  
CONST. 76 LF X 15" CPEP(SL)  
CONST. RCDI-TYPE D GRATE, +19.2, 15.6' RT.  
18" INV. IN (5) = 580.65  
18" INV. OUT (3) = 580.55  
TOP OF GRATE = 585.40
- 5 STA. 103+31.2, 25.0' LT. - STA. 103+19.2, 15.6' RT.  
CONST. 38 LF X 18" CPEP(SL)  
CONST. RCDI-TYPE D GRATE, +31.2, 25.0' LT.  
18" INV. OUT (4) = 580.84  
TOP OF GRATE = 585.40



DATE	DESCRIPTION
6/7/2023	RECONFIGURED PROPOSED UNDERGROUND UTILITY LAYOUT

RETAIN POLE, USE AS ELECT. RISER POLE, MOVE PROTECTION EQUIPMENT (BY OTHERS)

NEW POLE WITH COMMUNICATION RISERS (BY OTHERS)

SECONDARY SERVICE (BY OTHERS)

REMOVE POLE AND ANCHOR (BY OTHERS)  
INSTALL TELECOMMUNICATIONS VAULT  
CONNECT BANK UNDERGROUND POWER AND COMMUNICATIONS (BY OTHERS)

REPLACE POLE AND RETAIN OVERHEAD SERVICE TO POST OFFICE. (BY OTHERS)

REMOVE (BY OTHERS)

REMOVE POLE (BY OTHERS)

REMOVE (BY OTHERS)

REMOVE (BY OTHERS)

UPGRADE METERS AND CONVERT TO UNDERGROUND SERVICE (BY OTHERS)

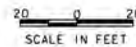
NEW POLE (BY OTHERS)

REPLACE POLE (BY OTHERS)

**UTILITY LEGEND**

- PROPOSED GMP ELECTRIC CONDUIT
- PROPOSED TELECOMMUNICATIONS CONDUIT
- - - - PROPOSED CONCRETE ENCASED GMP ELECTRIC CONDUIT
- - - - PROPOSED CONCRETE ENCASED TELECOMMUNICATIONS CONDUIT

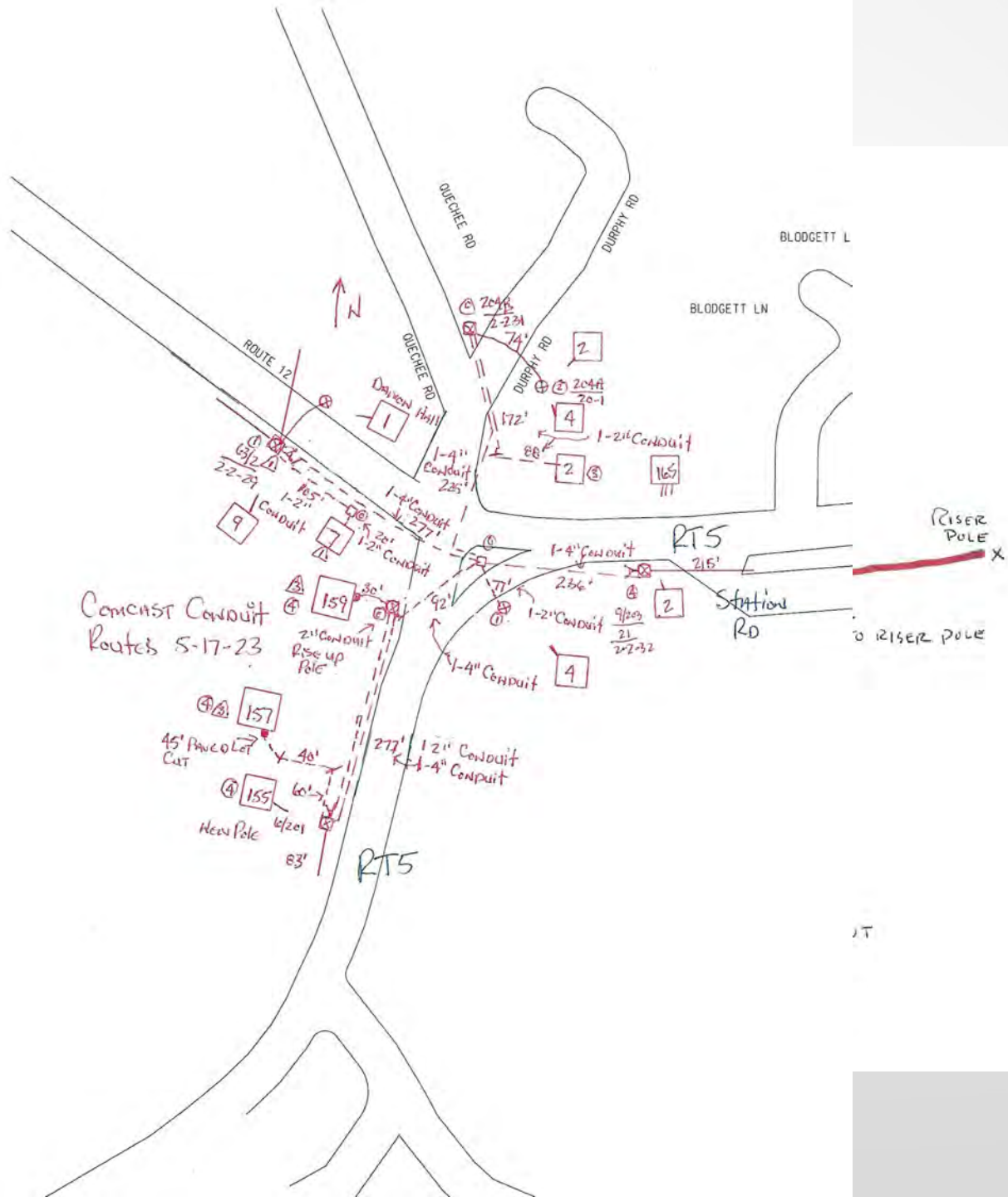
EL = ELECTRIC  
TEL = TELECOMMUNICATIONS



PROJECT NAME: HARTLAND	PLOT DATE: 6/7/2023
PROJECT NUMBER: STP BP19(2)	DRAWN BY: C.K. FORD
FILE NAME: 577908DR_UT.dgn	CHECKED BY: D.M. PECK
PROJECT LEADER: D.M. PECK	DESIGNED BY: C.K. FORD
DRAINAGE AND UTILITY LAYOUT (2 OF 2)	SHEET 24 OF 56



NEW  
Rise



er  
in



UTION ZONE  
BACKFILL AREA - 2'  
3  
(2)

# PROJECT CHALLENGES

- **Once GMP on ground, nearby abutters wanted modification. “Can we bury?” Change in property owners from design phase to construction phase. Because project is covered by federal funding, permits and procedures get triggered.**
- **Project team meetings every 2 weeks.**
- **Field modifications needed addressing ASAP**
- **US5 slip lane concrete**
- **Discovery of spare conduit not installed**
- **Town adopted underground utility ordinance**





















Quechee Rd

STOP

ALL WAY







Mascoma Bank





STOP



lascoma  
ank

STOP







# WRAP UP

- **GMP and telecoms are working on pulling underground wires**
- **Once abutters are finalized with GMP, will switch service over and remove utility poles in intersection**