

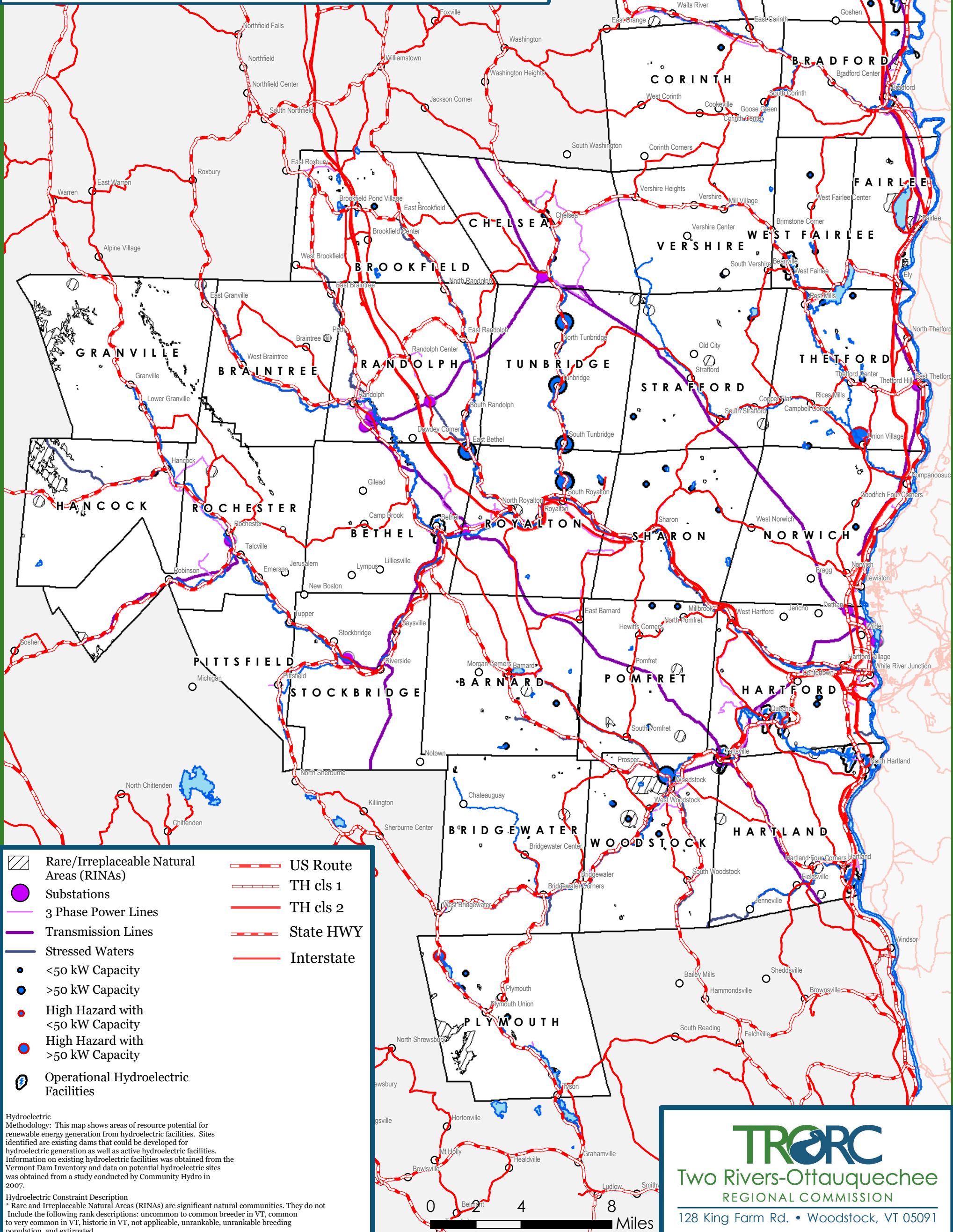
Two Rivers-Ottawaquechee Region of Vermont

Hydroelectric Energy Potential

Operational Hydroelectric Facilities & Potential Hydroelectric Facilities

Map 11 of 14
2025 Regional Plan
Adopted 2/26/2025

- data current to 2024 posting on VTGEODATA portal
- portal should be checked for most recent data



- Rare/Irreplaceable Natural Areas (RINAs)
- Substations
- 3 Phase Power Lines
- Transmission Lines
- Stressed Waters
- US Route
- TH cls 1
- TH cls 2
- State HWY
- Interstate
- <50 kW Capacity
- >50 kW Capacity
- High Hazard with <50 kW Capacity
- High Hazard with >50 kW Capacity
- Operational Hydroelectric Facilities

Hydroelectric Methodology: This map shows areas of resource potential for renewable energy generation from hydroelectric facilities. Sites identified are existing dams that could be developed for hydroelectric generation as well as active hydroelectric facilities. Information on existing hydroelectric facilities was obtained from the Vermont Dam Inventory and data on potential hydroelectric sites was obtained from a study conducted by Community Hydro in 2007.

Hydroelectric Constraint Description
* Rare and Irreplaceable Natural Areas (RINAs) are significant natural communities. They do not include the following rank descriptions: uncommon to common breeder in VT, common to very common in VT, historic in VT, not applicable, unrankable, unrankable breeding population, and extirpated.

TRORC
Two Rivers-Ottawaquechee
REGIONAL COMMISSION

128 King Farm Rd. • Woodstock, VT 05091