

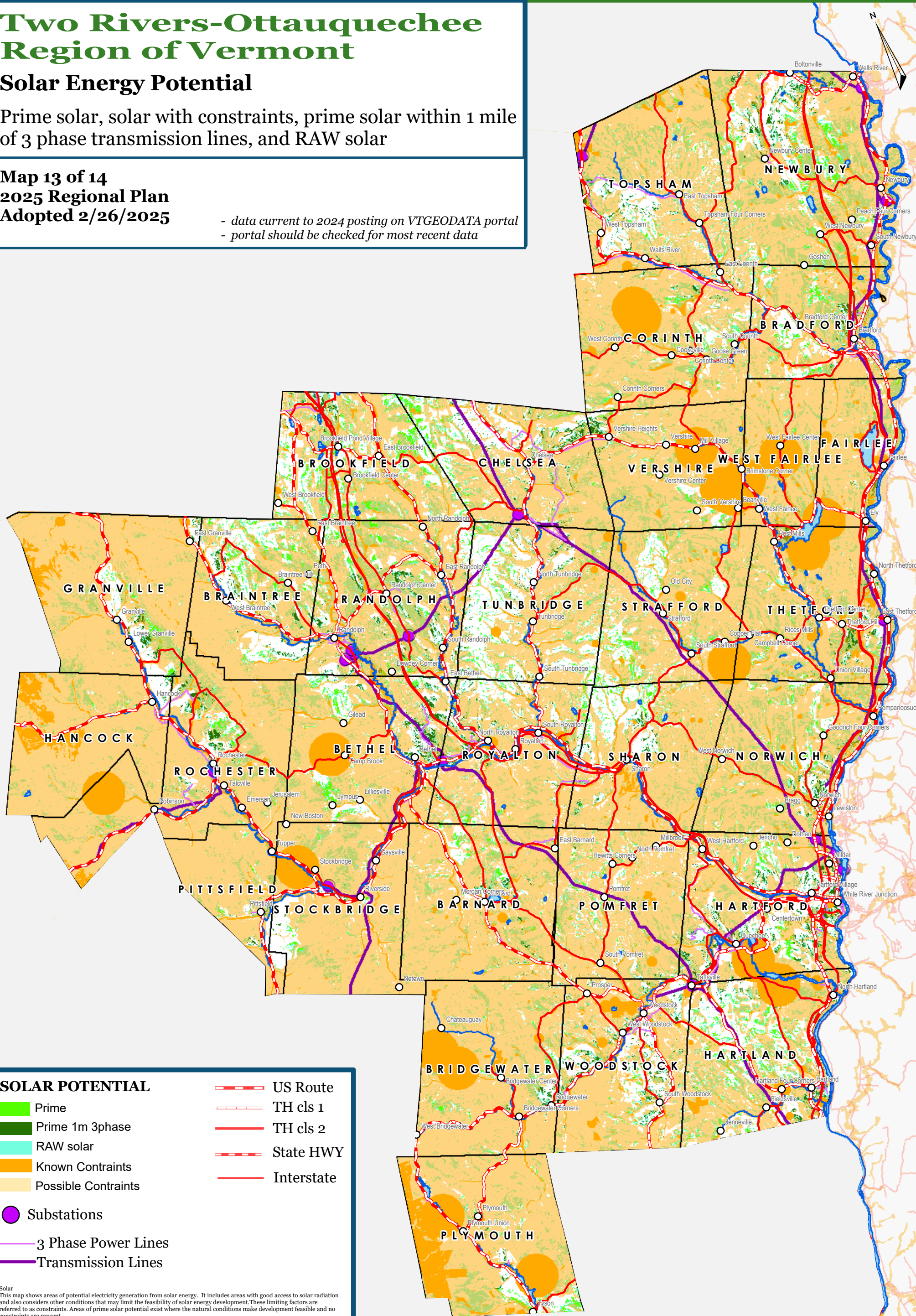
Two Rivers-Ottawaquechee Region of Vermont

Solar Energy Potential

Prime solar, solar with constraints, prime solar within 1 mile of 3 phase transmission lines, and RAW solar

Map 13 of 14
2025 Regional Plan
Adopted 2/26/2025

- data current to 2024 posting on VTGEODATA portal
- portal should be checked for most recent data



SOLAR POTENTIAL

- Prime
- Prime 1m 3phase
- RAW solar
- Known Constraints
- Possible Constraints

- US Route
- TH cls 1
- TH cls 2
- State HWY
- Interstate

- Substations
- 3 Phase Power Lines
- Transmission Lines

Solar
This map shows areas of potential electricity generation from solar energy. It includes areas with good access to solar radiation and also considers other conditions that may limit the feasibility of solar energy development. These limiting factors are referred to as constraints. Areas of prime solar potential exist where the natural conditions make development feasible and no constraints are present.

DARK GREEN Prime: No Constraints within 1 mile 3 phase power
GREEN Prime: No Constraints no known or possible constraints present
ORANGE Constraints no known but at least one or more possible constraints
BLUE GREEN Raw potential with constraints

Known Constraints
Vernal Pools (confirmed and unconfirmed layers), DEC River Corridors, FEMA Floodways, State-significant Natural Communities and Rare, Threatened, and Endangered Species
Wilderness Areas, including National Wilderness Areas, Class 1 and Class 2 Wetlands (VSWI and advisory layers)

Possible Constraints
Agricultural Soils (VT Agriculturally Important Soil Units), FEMA Special Flood Hazard Areas, Protected Lands (Updated 07/26/2016), Act 250 Agricultural Soil Mitigation areas, Deer Wintering Areas
ANR's Vermont Conservation Design Highest Priority Forest Block Datasets, Forest Blocks - Connectivity, Forest Blocks - Interior Forest Blocks - Physical Land Division, Hydric Soils

TRORC Unsuitable areas (included in known constraints)
FEMA Floodways, Wilderness Areas, including National Wilderness Areas
Class 1 Wetland



TRORC
Two Rivers-Ottawaquechee
REGIONAL COMMISSION

128 King Farm Rd. • Woodstock, VT 05091