

Abstract geometric lines in black on a white background, forming various overlapping polygons and shapes, primarily concentrated on the left side of the slide.

# REGIONAL BIKE PED PROJECTS SPOTLIGHT

MAY 8, 2025

RITA SETO, TRORC

# AGENDA

## **SCOPING:**

TUNBRIDGE VILLAGE SIDEWALK STUDY ON VT110

SHARON VILLAGE SIDEWALK STUDY ON VT14/VT132

RANDOLPH SIDEWALK STUDY ON VT12/WESTON

## **DESIGN / CONSTRUCTION:**

SOUTH ROYALTON SIDEWALK – CHELSEA BUSINESS BLOCK

BETHEL PLEASANT ST SIDEWALK

FAIRLEE US ROUTE 5 SIDEWALK PHASE 2

HARTFORD US ROUTE 5 SIDEWALK (UVAC to Ballardvale Dr)

# TUNBRIDGE VILLAGE VT110





# Project Area





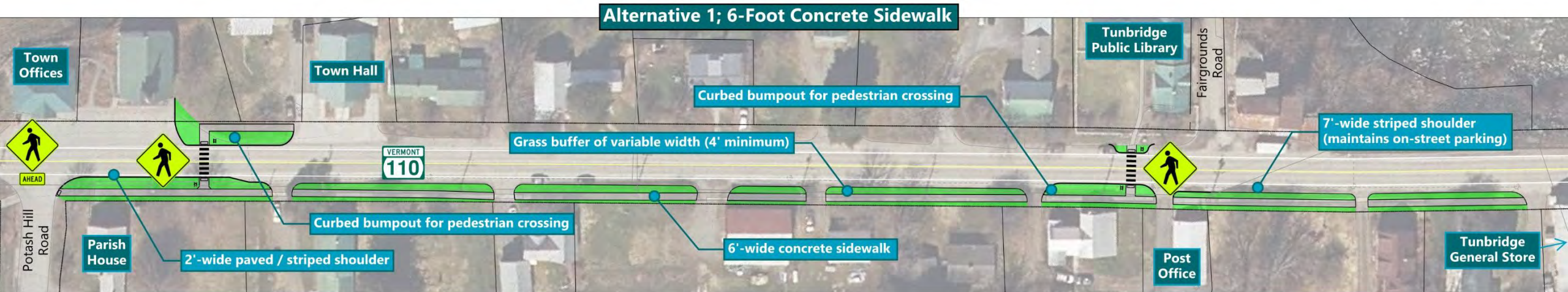
# Project Purpose

The Tunbridge Village Scoping Study seeks to **identify and prioritize improvements for pedestrian safety, accessibility, and connectivity** within Tunbridge Village and among its many destinations.

# Alternatives Considered



# Alternative 1: 6-Foot Concrete Sidewalk

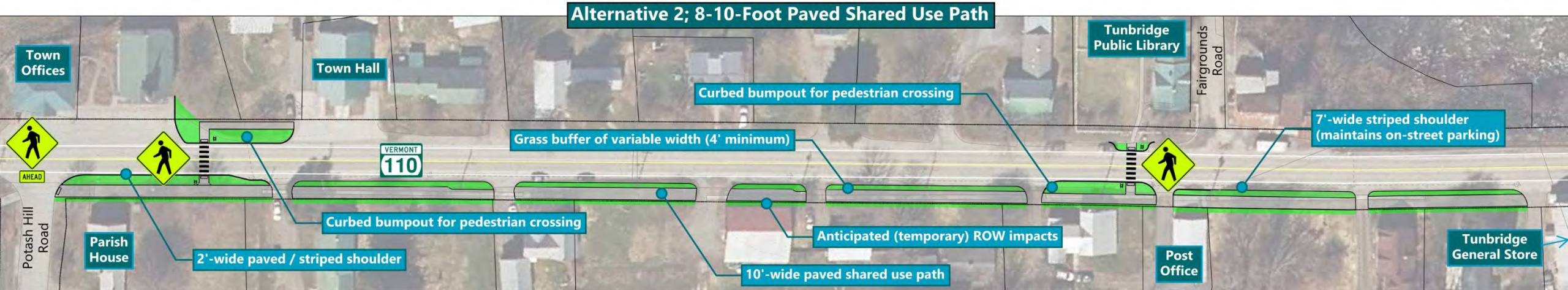


- 6' concrete sidewalk; east side of VT 110
- Crossings at Town Offices & Library
- Ends at the General Store
- Conceptual Cost Estimate: \$420,000

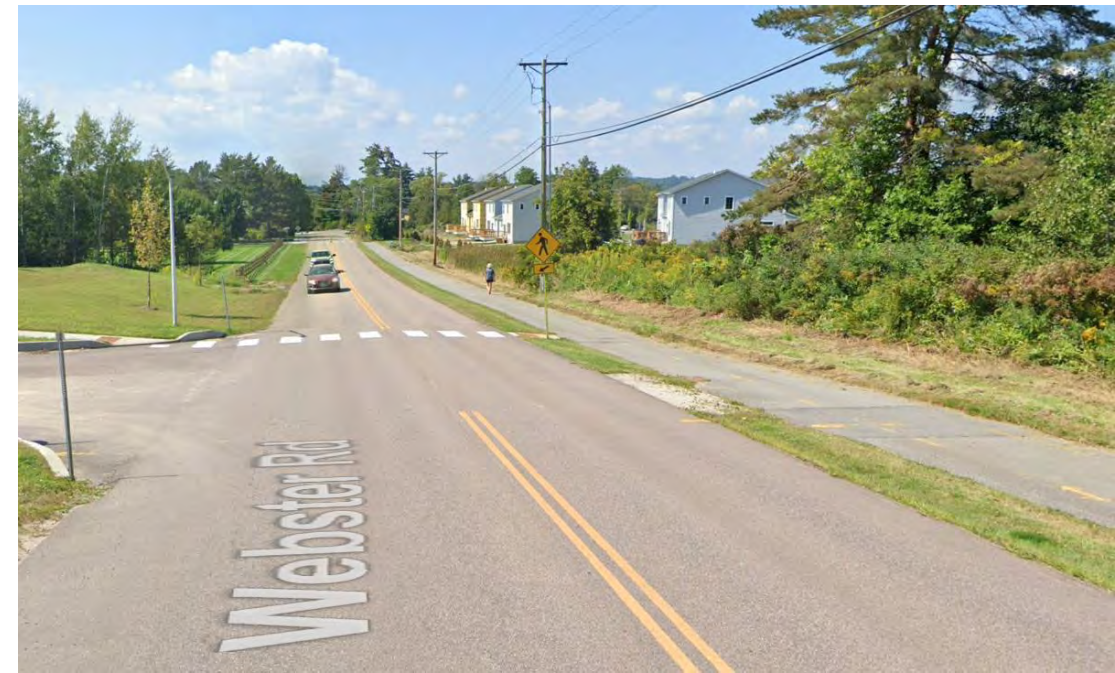




# Alternative 2: 8 to 10-Foot Paved Path

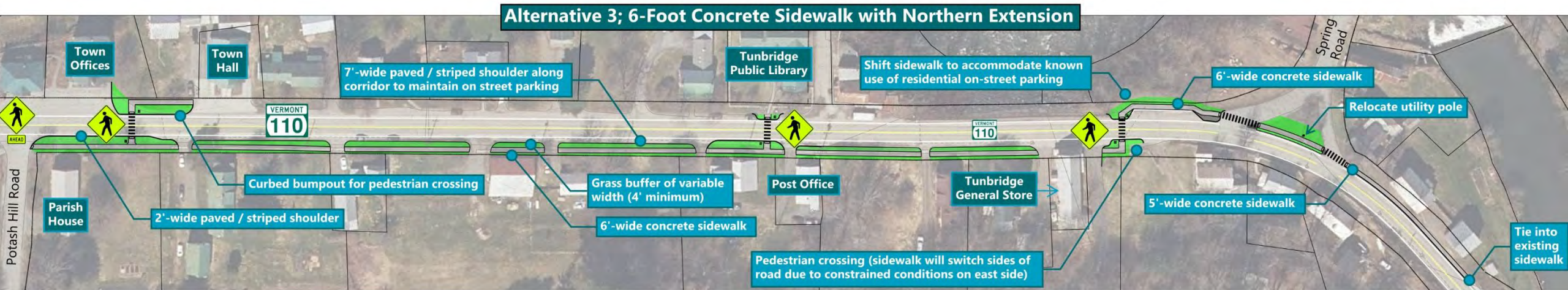


- 8-10' paved path; east side of VT 110
- Crossings at Town Offices & Library
- Ends at the General Store
- Conceptual Cost Estimate: \$490,000





# Alternative 3: 6-Foot Concrete Sidewalk (Extended)



- 6' concrete sidewalk; east side of VT 110
- Crossings at Town Offices, Library & General Store
- Ties into existing sidewalk
- Conceptual Cost Estimate: \$620,000



# Evaluation Matrices – Multimodal and Traffic Considerations

		No Build	Alternative 1 6' Concrete Sidewalk	Alternative 2 8-10' Shared Use Path	Alternative 3 6' Concrete Sidewalk (with Northern Extension)
Multimodal and Traffic Considerations	Typical Section	No Change	6' Concrete Sidewalk	10' Paved Shared Use Path	6' Concrete Sidewalk
	Bicycle Access	No Change	4' Paved Shoulder	10' Paved Shared Use Path	4' Paved Shoulder
	Pedestrian Safety	No Change	Improved Continuous ped facility, 2 new safe crossings, Traffic calming,	Improved Continuous ped facility, 2 new safe crossings, Traffic calming,	Improved More continuous ped facility, 3 new safe crossings, More traffic calming,
	Vehicle Safety	No Change	Slight Improvement Traffic calming, (2 bumpouts and delineated road edges)	Slight Improvement Traffic calming, (2 bumpouts and delineated road edges)	Improved Most Traffic calming, (3 bumpouts and delineated road edges)



# Evaluation Matrices – Impacts

		No Build	Alternative 1 6' Concrete Sidewalk	Alternative 2 8-10' Shared Use Path	Alternative 3 6' Conc. SW (with Northern Extension)
Impacts	ROW Impacts	-	None Expected / Minor (Temp)	Minor (Temp)	Minor (Temp)
	Agricultural Lands	-	No	No	No
	Archaeological	-	Present / Further Inv. Req'd	Present / Further Inv. Req'd	Present / Further Inv. Req'd
	Historic	-	No Adverse Effect	No Adverse Effect	No Adverse Effect
	Hazardous Materials	-	No	No	No
	Floodplains	-	No	No	Yes
	Fish & Wildlife	-	No	No	No
	Rare, Threatened & Endangered Species	-	No	No	No
	Public Parks, Recreation Areas, Wildlife/Waterfowl Refuges - Section 4(f)	-	No 4(f) Use - Temporary Easements Only	No 4(f) Use - Temporary Easements Only	No 4(f) Use - Temporary Easements Only
	LWCP - Sect. 6(f)	-	No	No	No
	Managed Lands	-	No	No	No
	Wetlands	-	No	No	No
	Streams	-	No	No	No
	New Impervious Surfaces	-	7,100 SF	11,300 SF	9,200 SF

# Evaluation Matrices – Community Character

		No Build	Alternative 1 6' Concrete Sidewalk	Alternative 2 8-10' Shared Use Path	Alternative 3 6' Conc. SW (with Northern Extension)
Community Character	Aesthetics	No Change	Improved	Improved	Improved
	Community Character	No Change	Improved	Improved	Improved
	Economic Impacts	No Change	Minimal (Maintenance)	Minimal (Maintenance)	Minimal (Maintenance)
	Conformance to Reg. Transp. Plan	No	Yes	Yes	Yes
	Satisfies Purpose & Need	No	Yes	Yes	Yes

# Public Meeting #2; Alternatives Presentation



# Public Meeting #2 – Alternatives Presentation

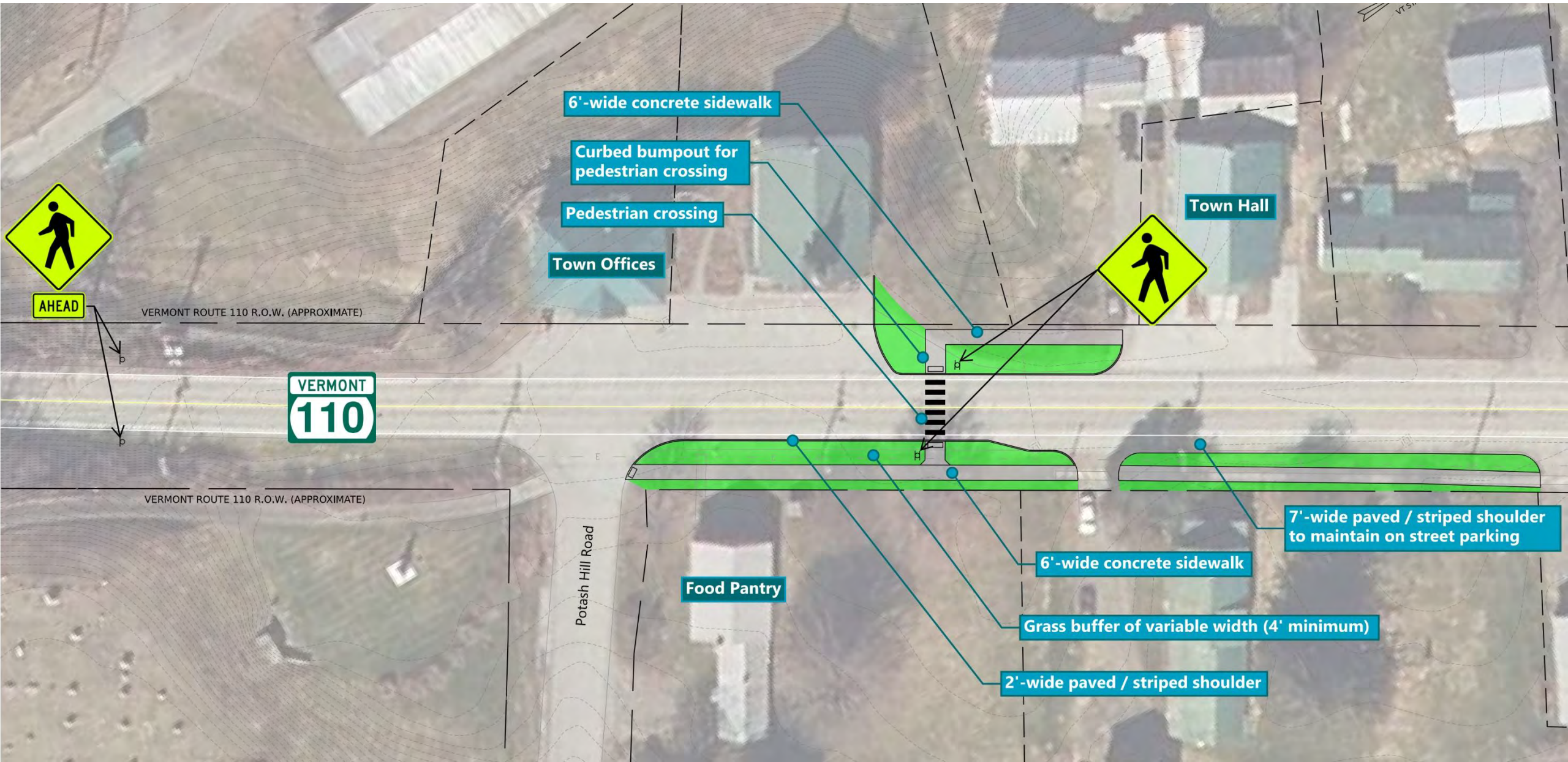
- Held on August 14, 2024; 40+ attendees
- Concerns heard:
  - Parking (maintain as much as possible)
  - Maintenance of sidewalk (winter)
  - Desire to phase improvements (start small)
- Straw poll supported Alts 1 & 3 (receiving 21 votes), “No Build” received 14 votes
- Follow up with Selectboard endorsed moving forward with Alternative 1 as Preferred Alternative



# Recommended Alternative

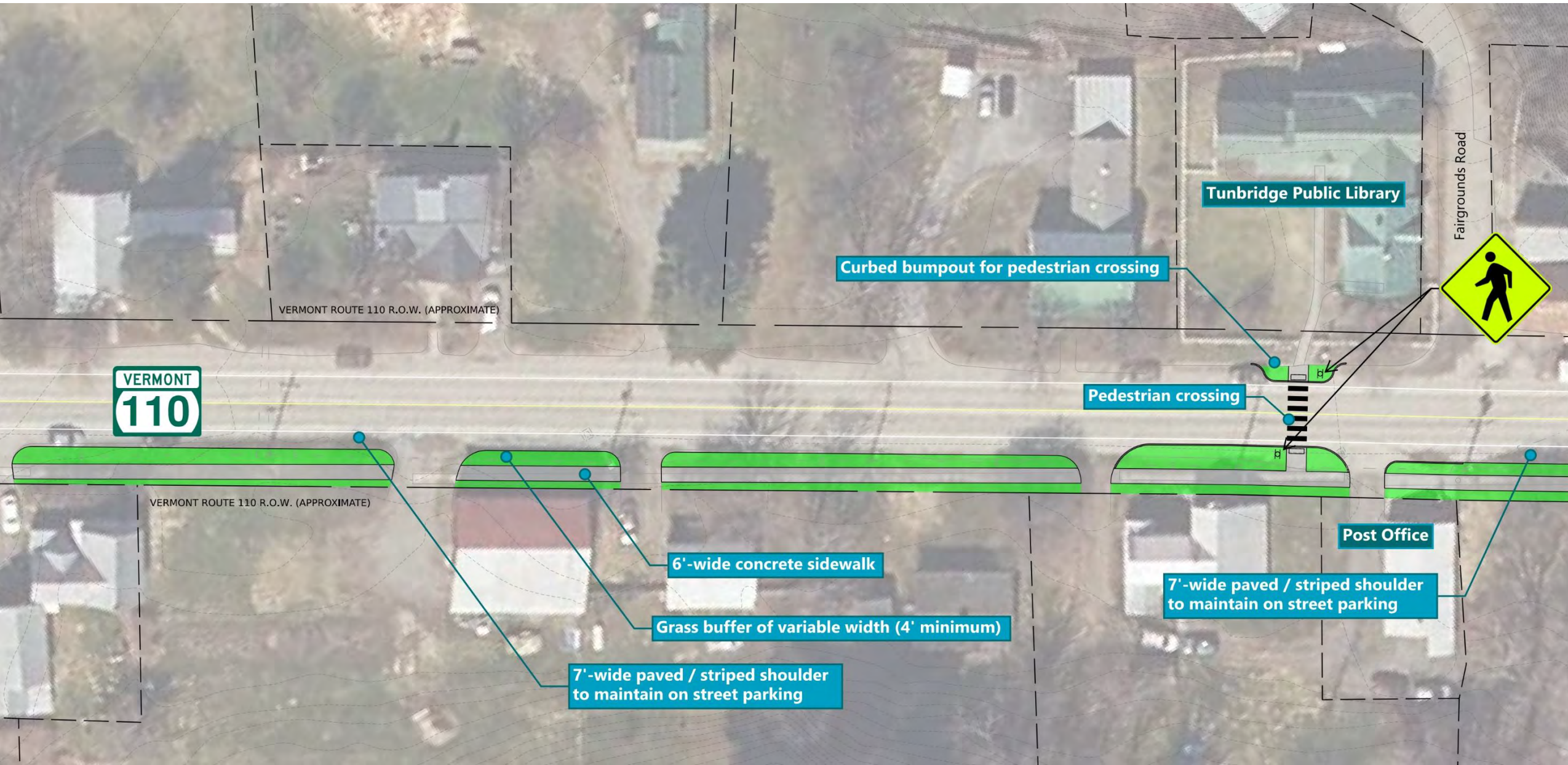


# Alternative 1: 6-Foot Concrete Sidewalk





# Alternative 1: 6-Foot Concrete Sidewalk





# Alternative 1: 6-Foot Concrete Sidewalk



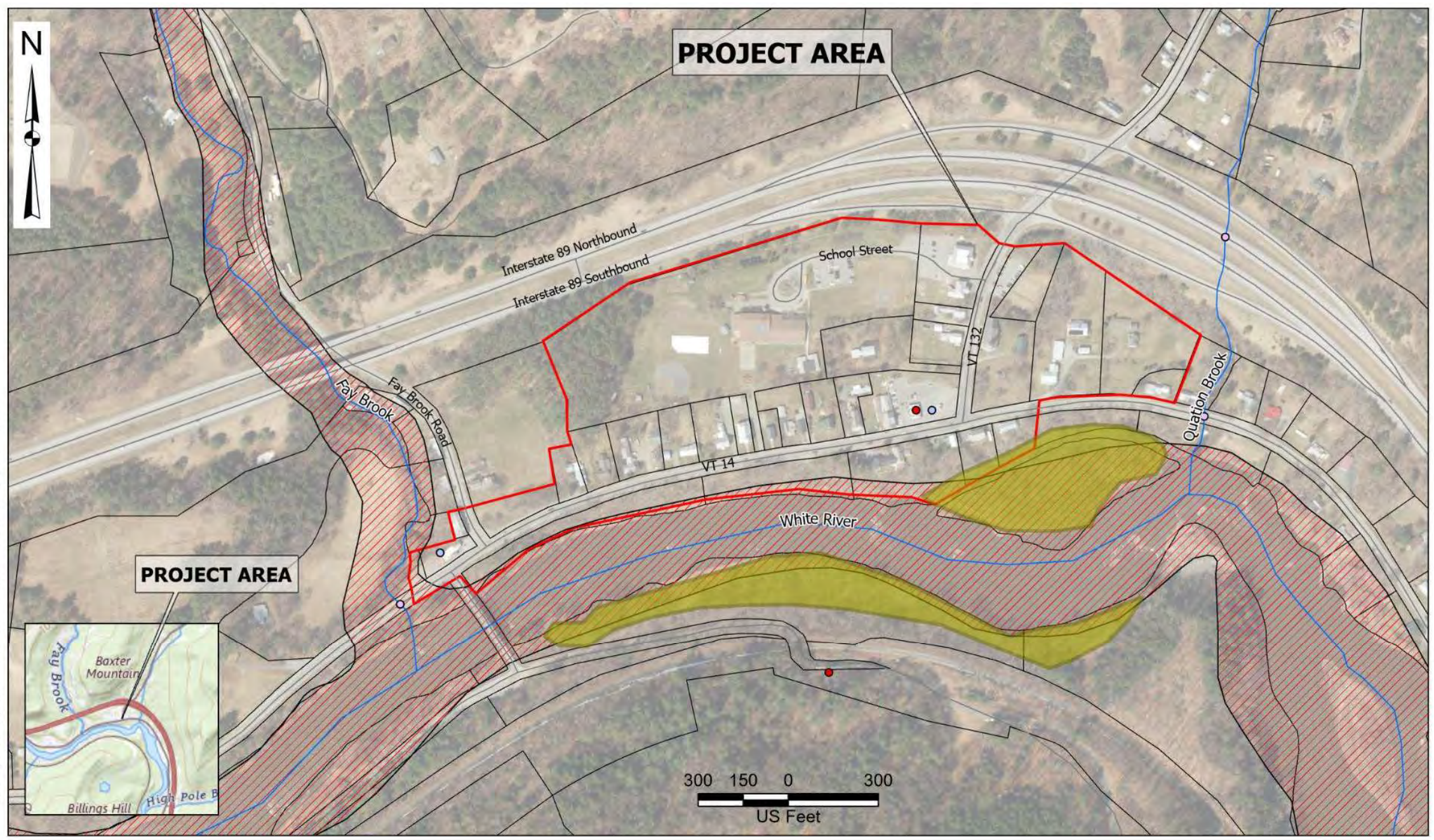


# SHARON VILLAGE VT14/ROUTE 132





Path: K:\P2023\0005\S01\Map\2023005.S10\_Base\Map.aprx Layout Name: Figure 2 Map Name: Map Frame  
Date Exported: 4/1/2025 11:48 AM User: Dora.Bean Date Saved: 4/1/2025 11:47 AM



<p><b>Legend</b></p> <ul style="list-style-type: none"><li>Culvert</li><li>Hazardous Waste Site</li><li>Act 250 Permit</li><li>Stream/River</li><li>Road</li><li>Vermont Significant Wetland</li><li>FEMA Special Flood Hazard Area</li><li>Project Area</li><li>Parcel Boundary</li></ul>	<p>Disclaimer: This map is not the product of a Professional Land Survey. It was created by Fuss &amp; O'Neill, Inc. for general reference, informational, planning and guidance use, and is not a legally authoritative source as to location of natural or manmade features. Proper interpretation of this map may require the assistance of appropriate professional services. Fuss &amp; O'Neill, Inc. makes no warrantee, express or implied, related to the spatial accuracy, reliability, completeness, or currentness of this map.</p>		<p><b>PROJECT RESOURCE MAP</b> Sharon Village Sidewalk Scoping Study</p> <p>SHARON VERMONT</p>	<p>PROJ. No. 20230005.S01 DATE: APRIL 2025</p> <p><b>FIGURE 1</b></p>
--	--	--	--	---



# Purpose and Need Statement

## Purpose

To develop, design, and implement improvements to increase the safety and mobility of pedestrians and bicyclists, and increase areas to be safely accessed by these users.

## Need

- Defined and ADA compliant sidewalks and crosswalks
- Reduce vehicle speeds to make walking and biking safer





# Alternatives

Alternative 1 – No Build

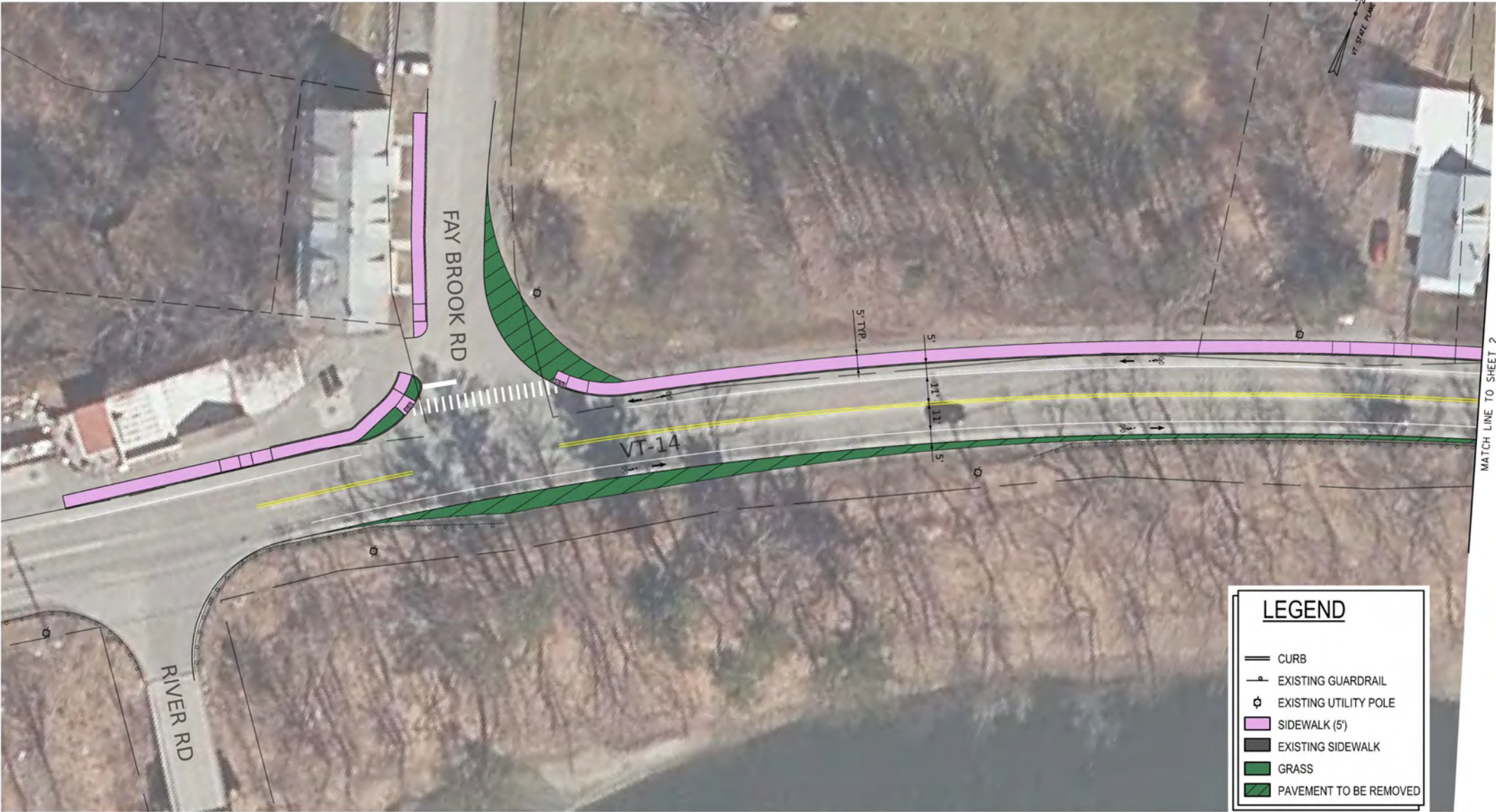
Alternative 2 – Sidewalk, Bike Shoulders,  
3-way Stop

Alternative 3 – Sidewalk, Truck Aprons





ALTERNATIVE 2  
SHARON TAP TA23(8) PEDESTRIAN ACCESSIBILITY SCOPING STUDY



0 20 40  
SCALE IN FEET





ALTERNATIVE 2  
SHARON TAP TA23(8) PEDESTRIAN ACCESSIBILITY SCOPING STUDY



0 20 40  
SCALE IN FEET





ALTERNATIVE 2  
SHARON TAP TA23(8) PEDESTRIAN ACCESSIBILITY SCOPING STUDY



**LEGEND**

- CURB
- EXISTING GUARDRAIL
- EXISTING UTILITY POLE
- SIDEWALK (5')
- EXISTING SIDEWALK
- GRASS
- PAVEMENT TO BE REMOVED





# ALTERNATIVE 2

## SHARON TAP TA23(8) PEDESTRIAN ACCESSIBILITY SCOPING STUDY

LEGEND

 CURB

 EXISTING GUARDRAIL

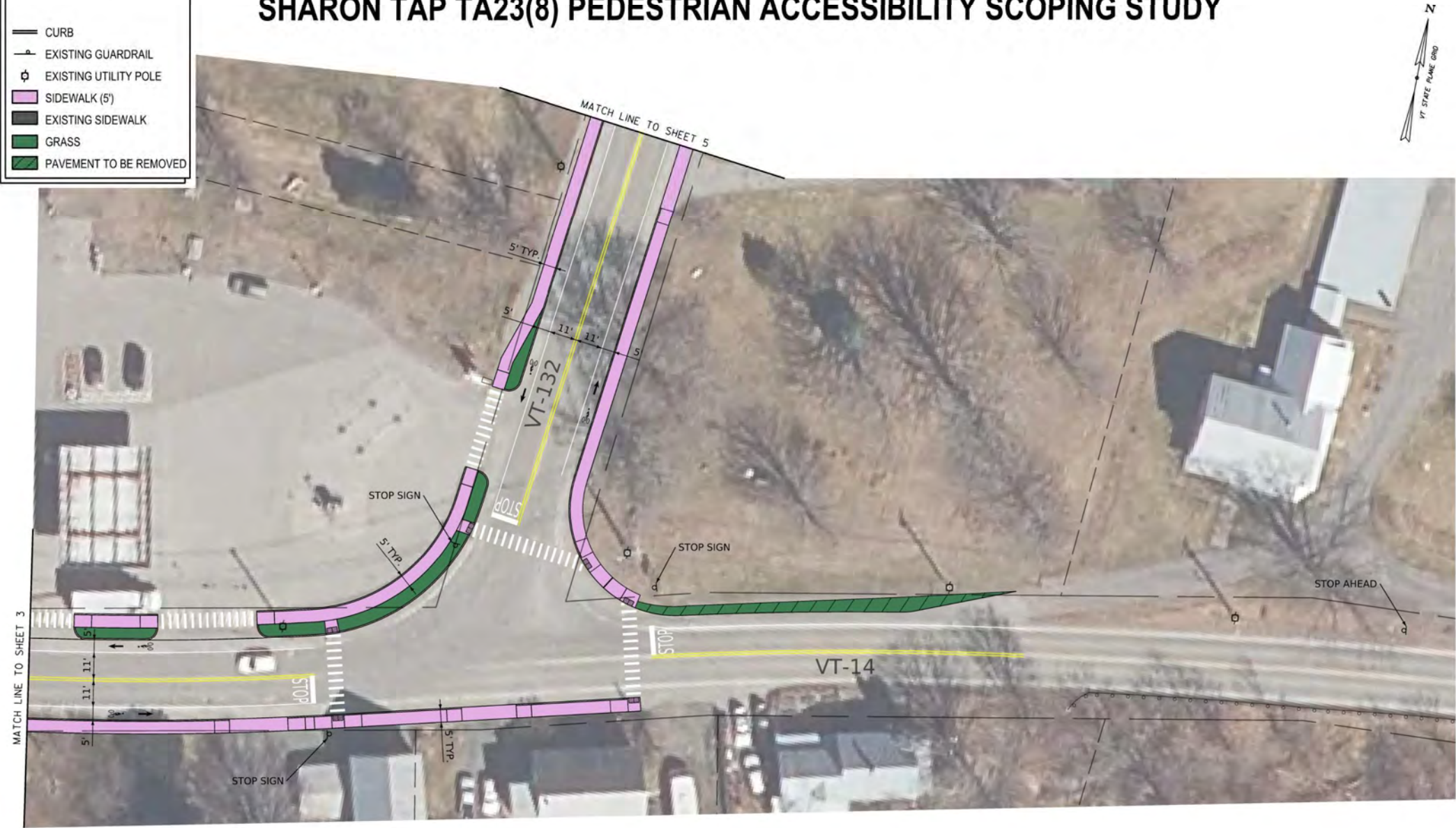
 EXISTING UTILITY POLE

 SIDEWALK (5')

 EXISTING SIDEWALK

 GRASS

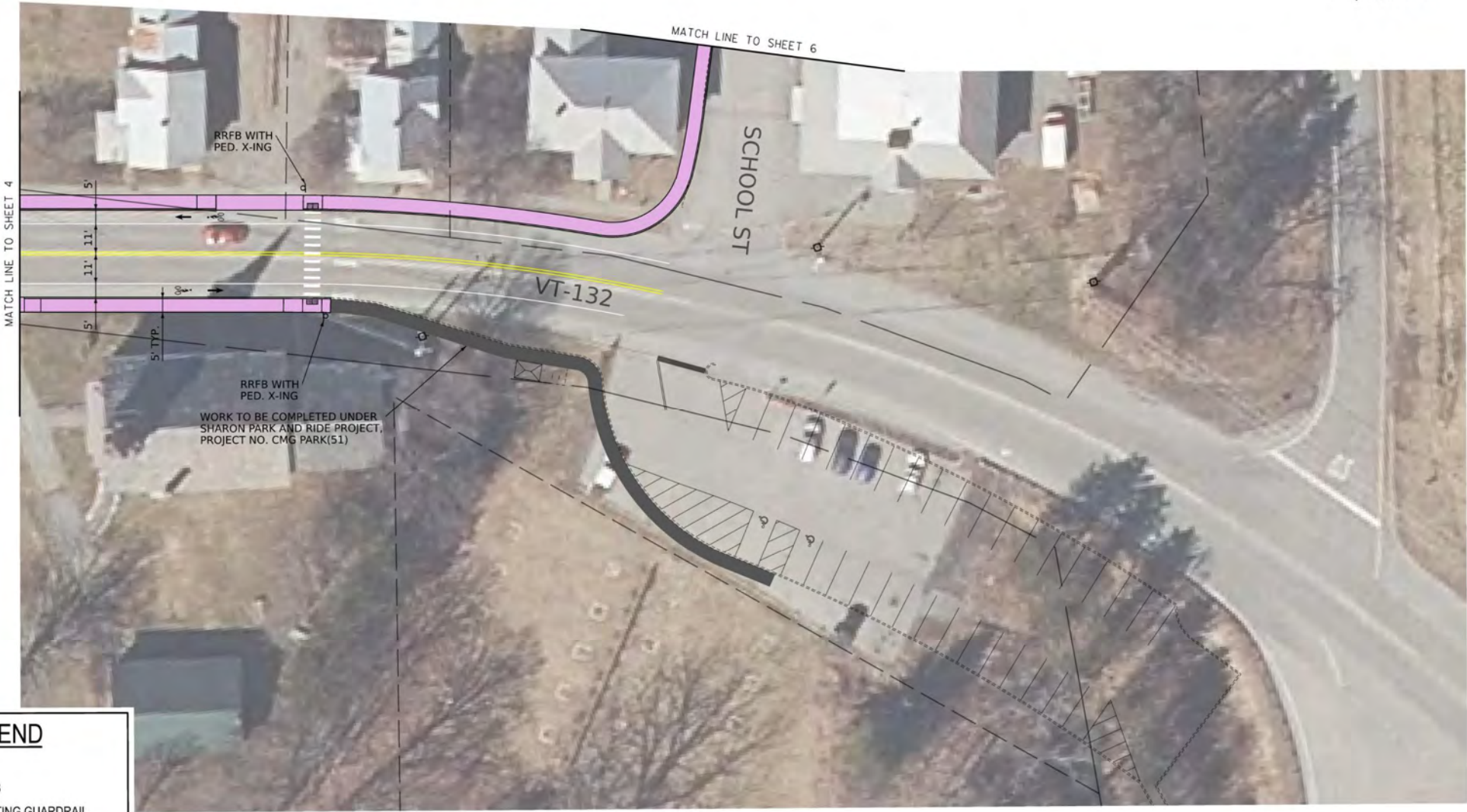
 PAVEMENT TO BE REMOVED





# ALTERNATIVE 2

## SHARON TAP TA23(8) PEDESTRIAN ACCESSIBILITY SCOPING STUDY



**LEGEND**

- CURB
- EXISTING GUARDRAIL
- EXISTING UTILITY POLE
- SIDEWALK (5')
- EXISTING SIDEWALK
- GRASS
- PAVEMENT TO BE REMOVED

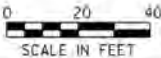


ALTERNATIVE 2  
SHARON TAP TA23(8) PEDESTRIAN ACCESSIBILITY SCOPING STUDY



**LEGEND**

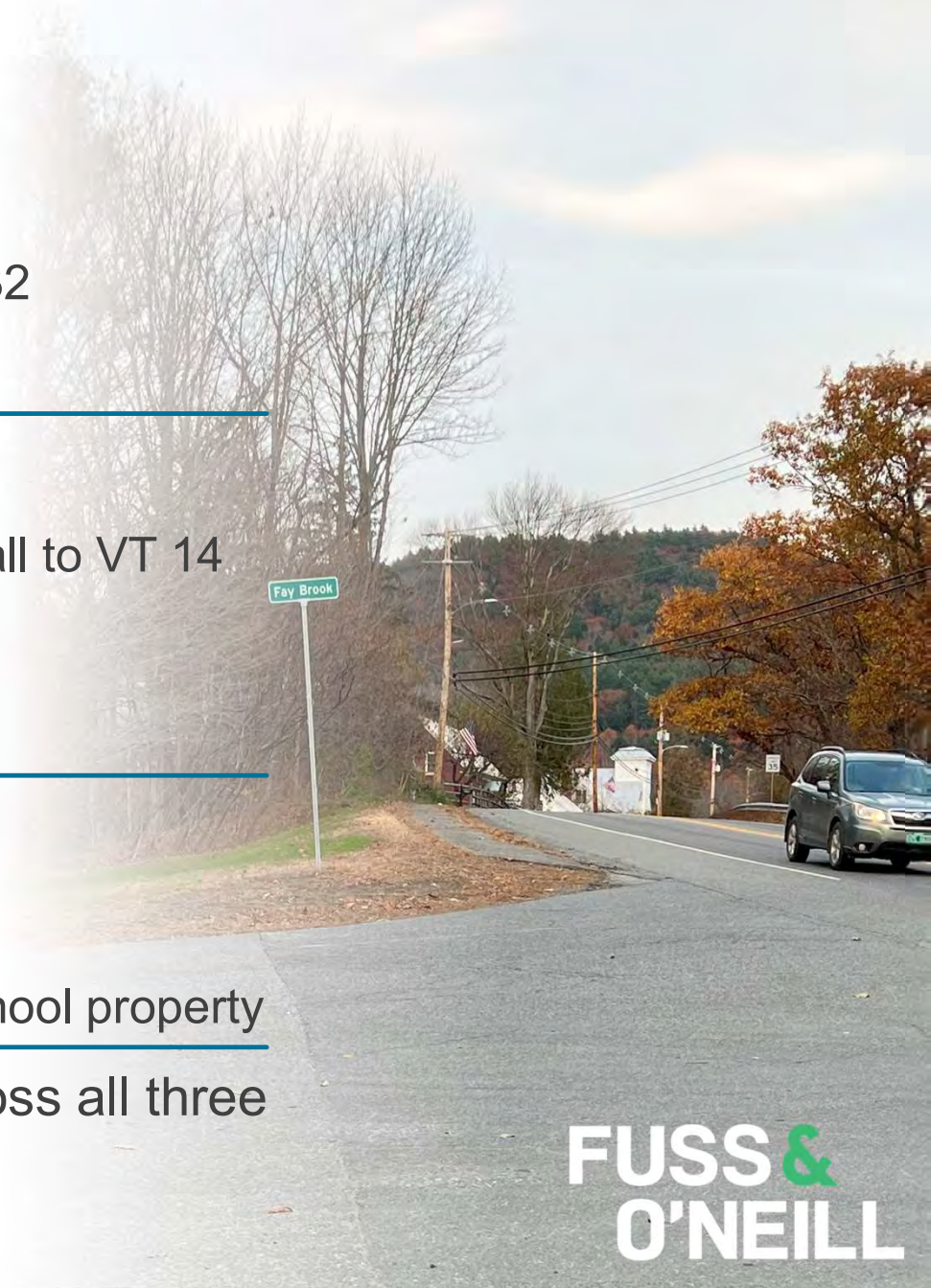
- CURB
- EXISTING GUARDRAIL
- EXISTING UTILITY POLE
- SIDEWALK (5')
- EXISTING SIDEWALK
- GRASS
- PAVEMENT TO BE REMOVED





# Alternative 2 – Sidewalk, Bike Shoulders, 3-Way Stop

- VT 14:
  - Sidewalk – concrete
    - north side of VT 14 from VT 132 to Midway
    - south side of VT 14 near intersection with VT 132
  - Bike accessible shoulders on both sides
- VT132:
  - Sidewalk - concrete
    - both sides of VT 132 from Park 'n Ride/Town Hall to VT 14
  - Bike accessible shoulders on both sides
  - Flashing beacon at crosswalk
- School St & School Access:
  - Sidewalk – Concrete
    - Connect VT 132 to Sharon Elementary
    - Sidewalk along Seven Stars drive to back of school property
- Intersection:
  - 3-way stop configuration with crosswalks across all three legs



# Alternative 2 – Sidewalk, Bike Shoulders, 3-Way Stop

- Phase 1 –
  - VT 132 Sidewalks
  - Convert intersection of VT 14 and VT 132 to 3-way stop with crosswalks across VT 132
  - Rapid flashing beacons at crosswalk near church
  - Estimated Phase 1 project costs \$540k



# Alternative 2 – Sidewalk, Bike Shoulders, 3-Way Stop

- Phase 2 –
  - Sidewalk on north side of VT 14
  - School access sidewalk next to Seven Stars
  - Bike shoulders on VT 14
- Estimated Phase 2 project costs \$1.5M



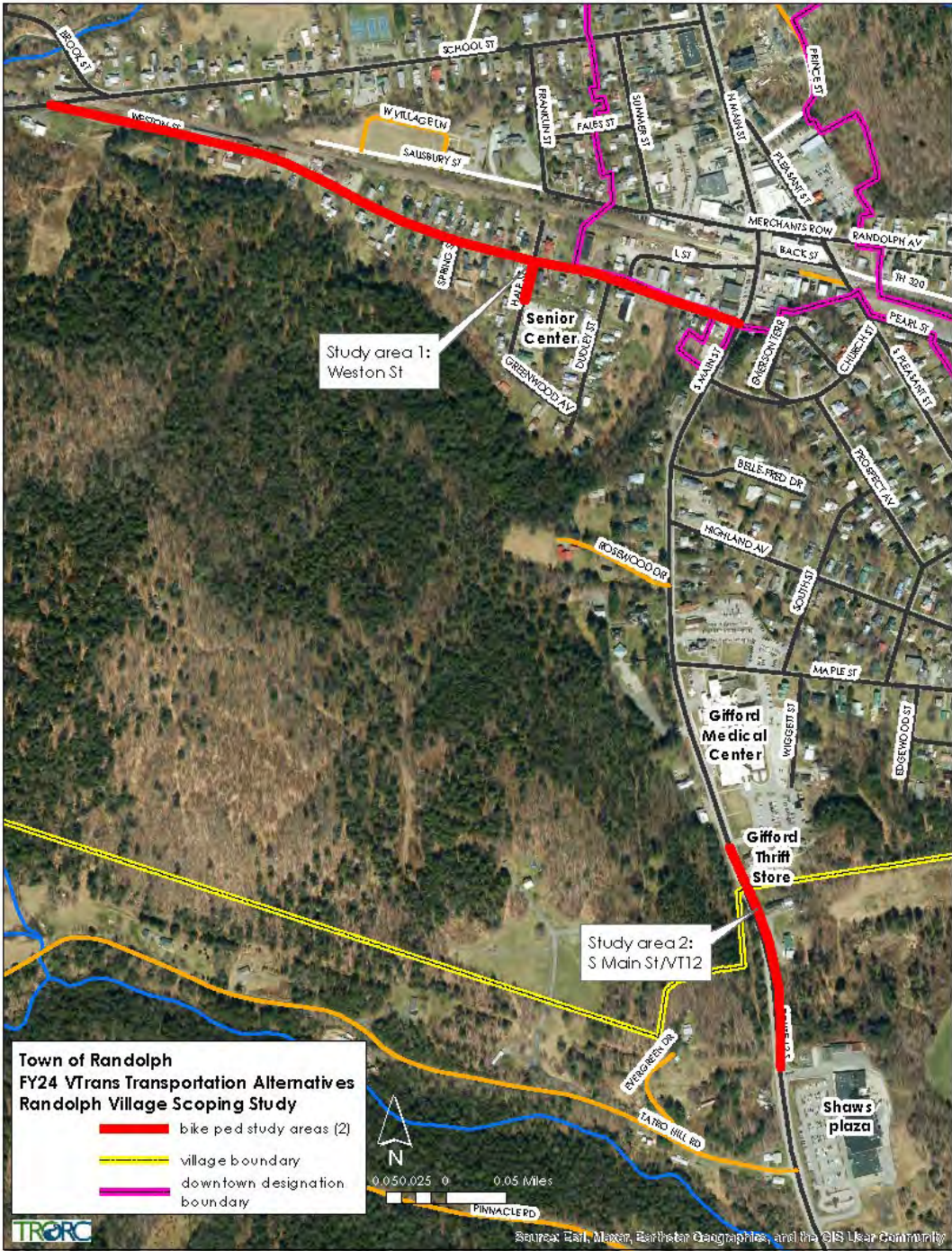
# Alternative 2 – Sidewalk, Bike Shoulders, 3-Way Stop

- Phase 3 –
  - School Street Sidewalk
- Estimated Phase 3 project costs \$360k
- Phase 4 –
  - Sidewalk on south side of VT 14
  - Crosswalks across VT 14
- Estimated Phase 4 project costs \$270k





# RANDOLPH VILLAGE VT12 / WESTON ST

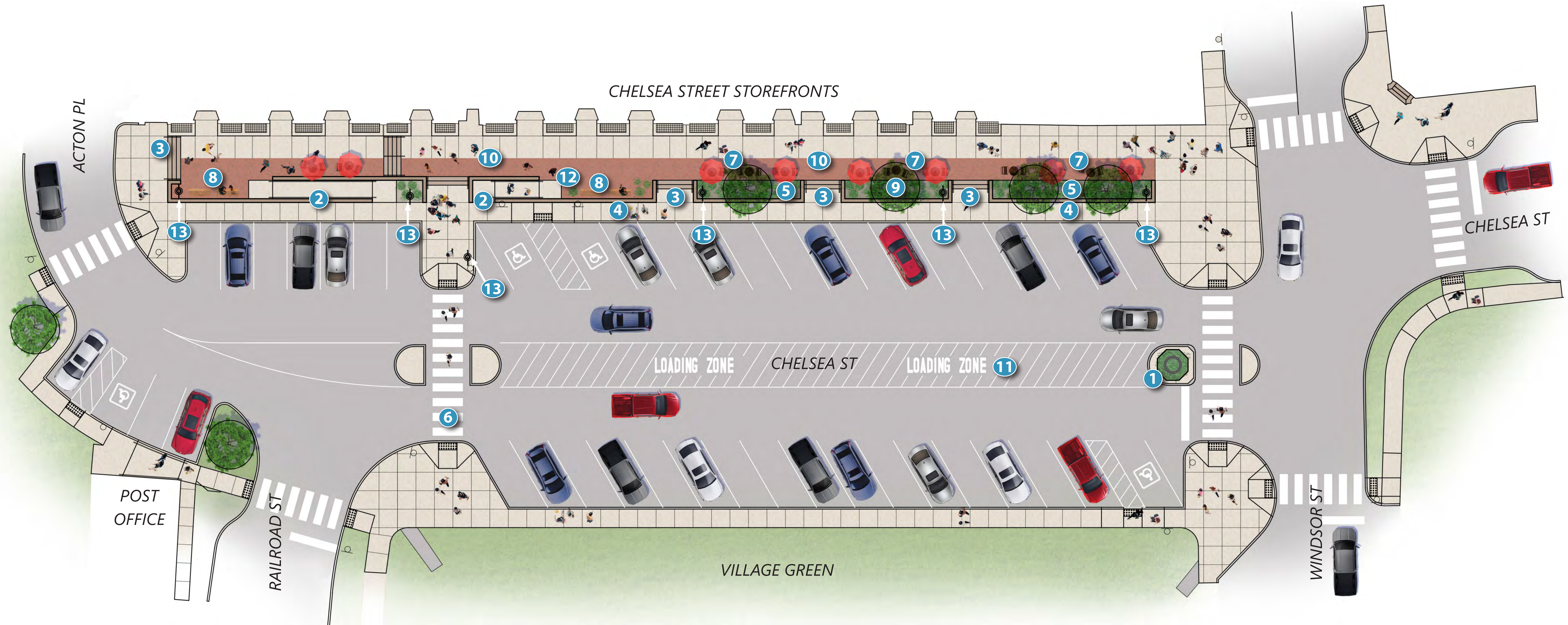




# ROYALTON – CHELSEA BUSINESS BLOCK

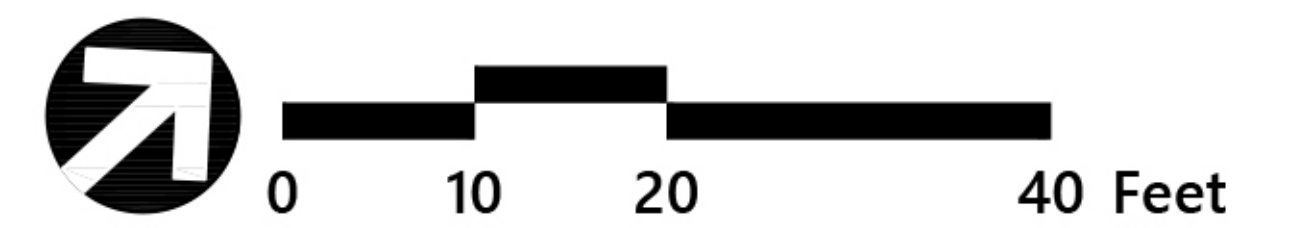






## KEY

- |                                   |                                |                                  |
|-----------------------------------|--------------------------------|----------------------------------|
| 1 Historic Well Feature / Planter | 6 Mid-Block Crossing           | 11 Loading Zone in Street Median |
| 2 ADA Ramp                        | 7 Outdoor Dining Opportunities | 12 Planter Pots                  |
| 3 Steps                           | 8 Benches                      | 13 Ornamental Street Lights      |
| 4 Low Seat Wall                   | 9 Ornamental Flowering Trees   |                                  |
| 5 Planting Area                   | 10 Brick Paving                |                                  |



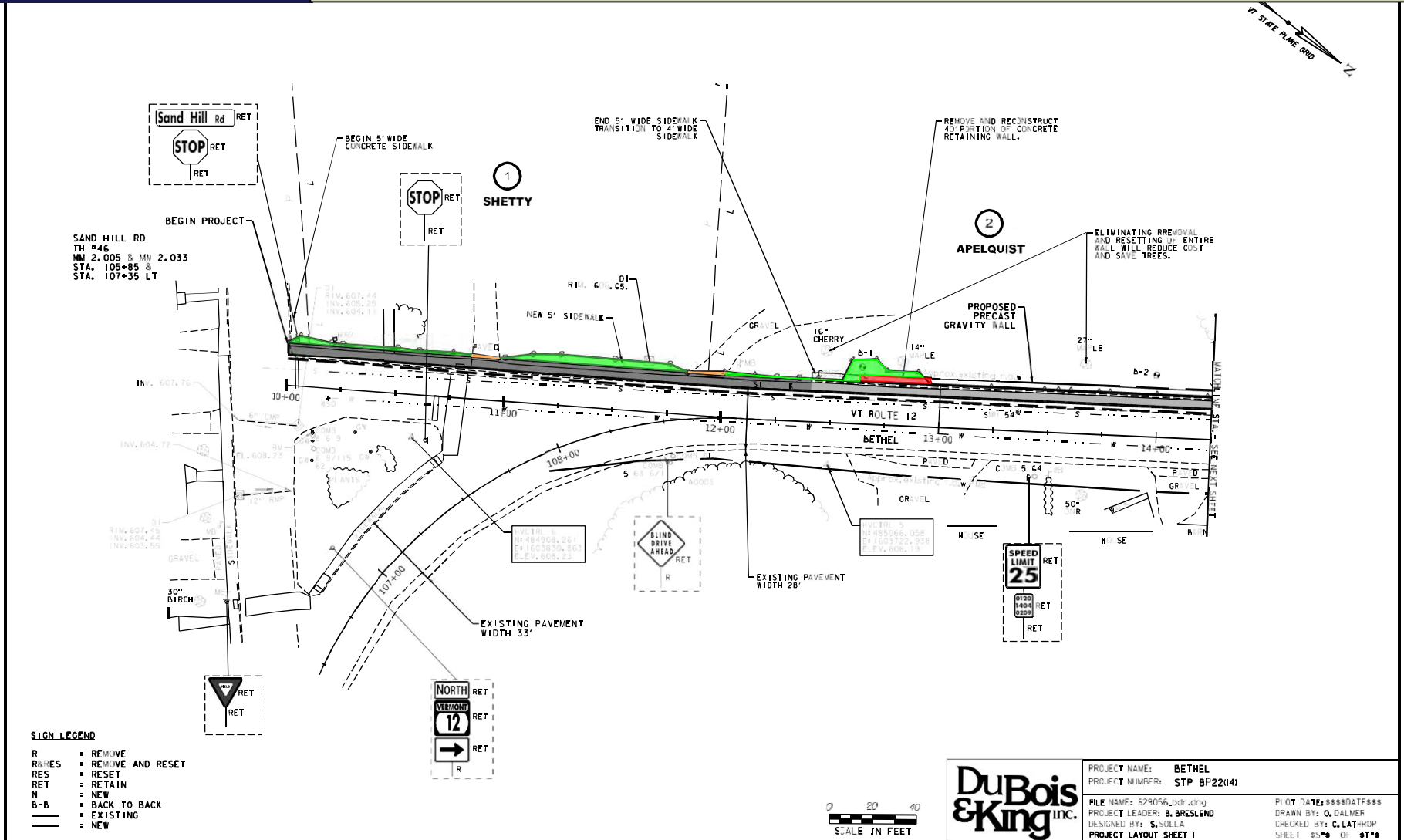


## BETHEL – PLEASANT ST

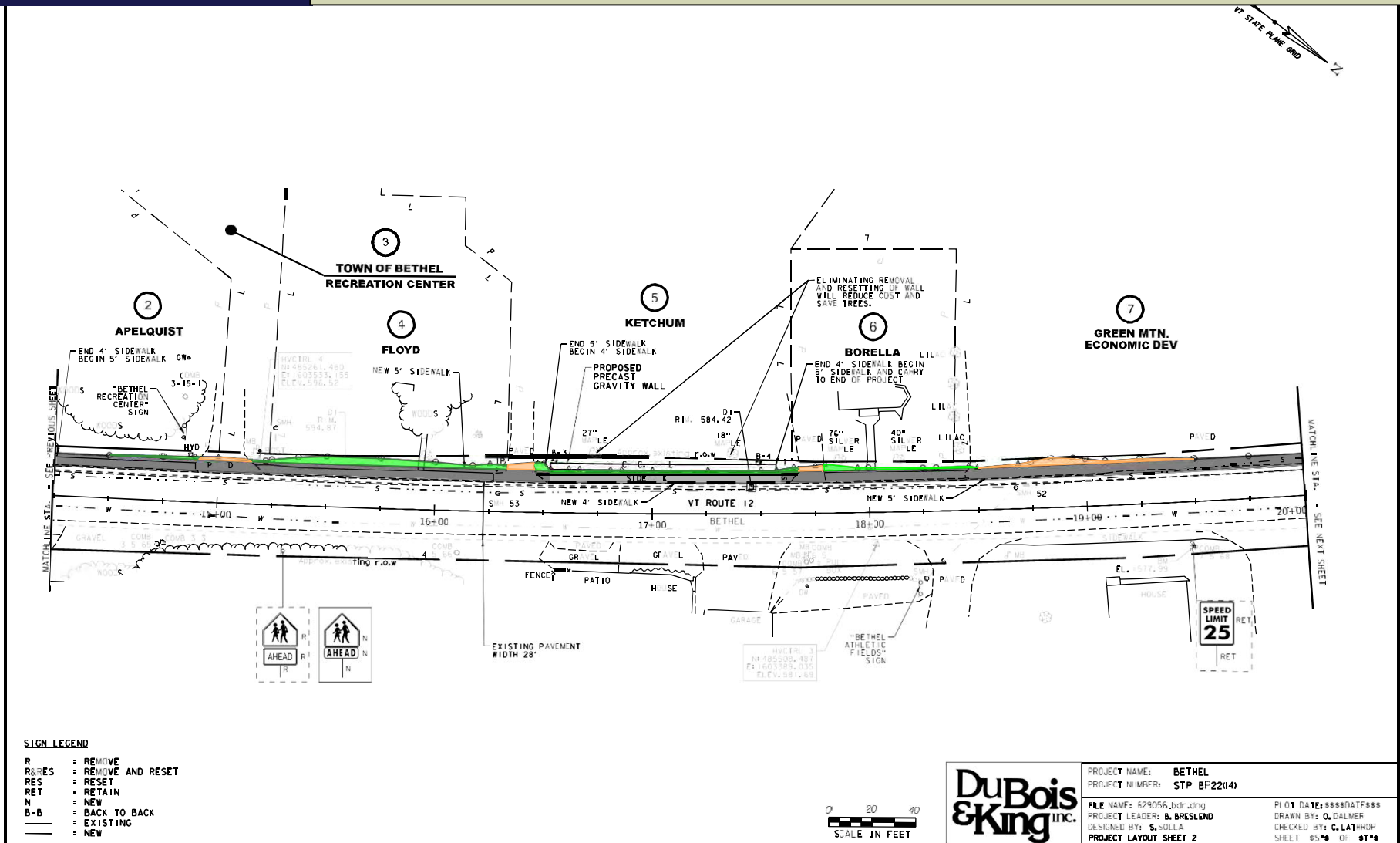




# Alternative 3 – Precast Concrete Wall Repair









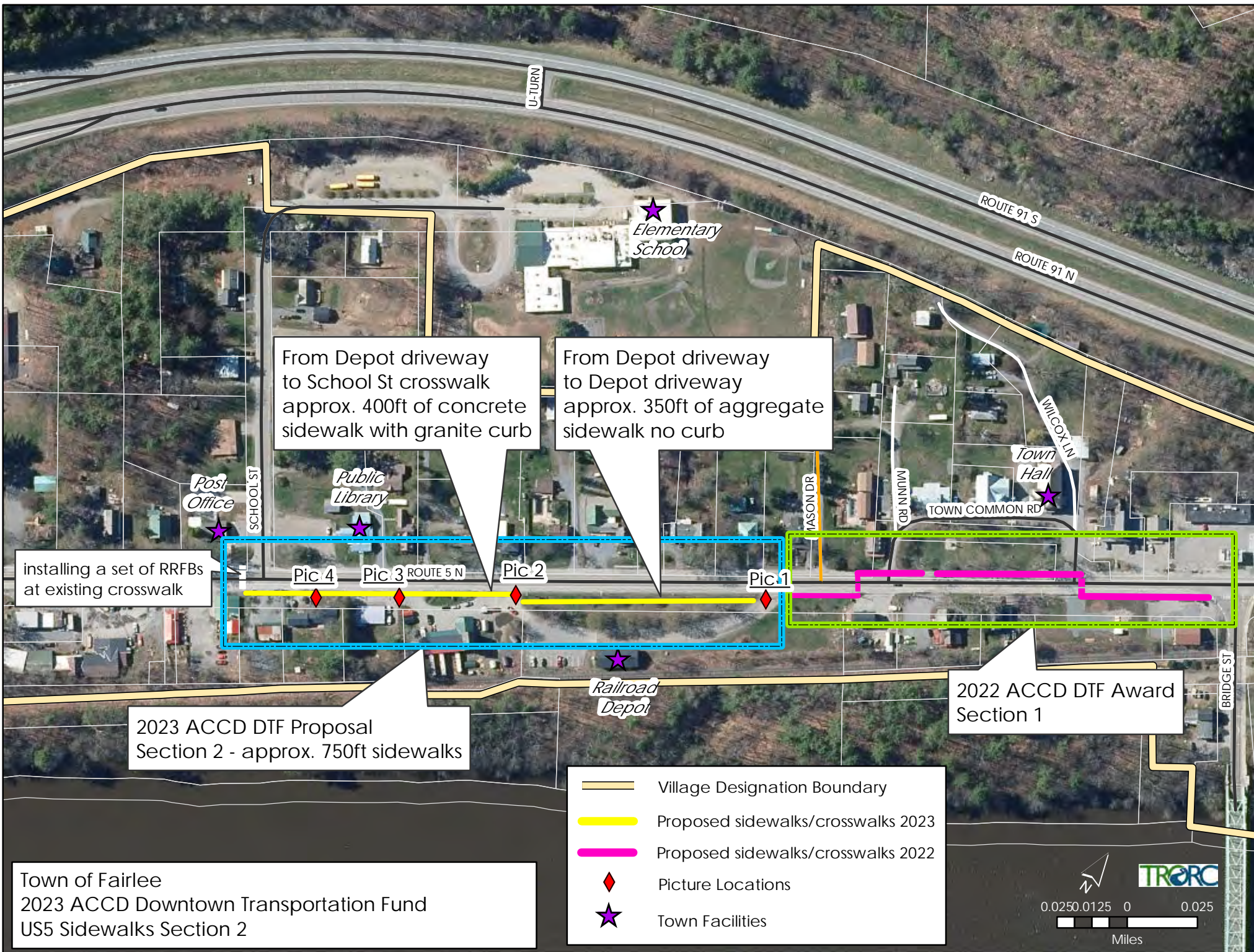




## FAIRLEE – US ROUTE 5









## HARTFORD – US ROUTE 5 (UVAC TO BALLARDVALE DR)

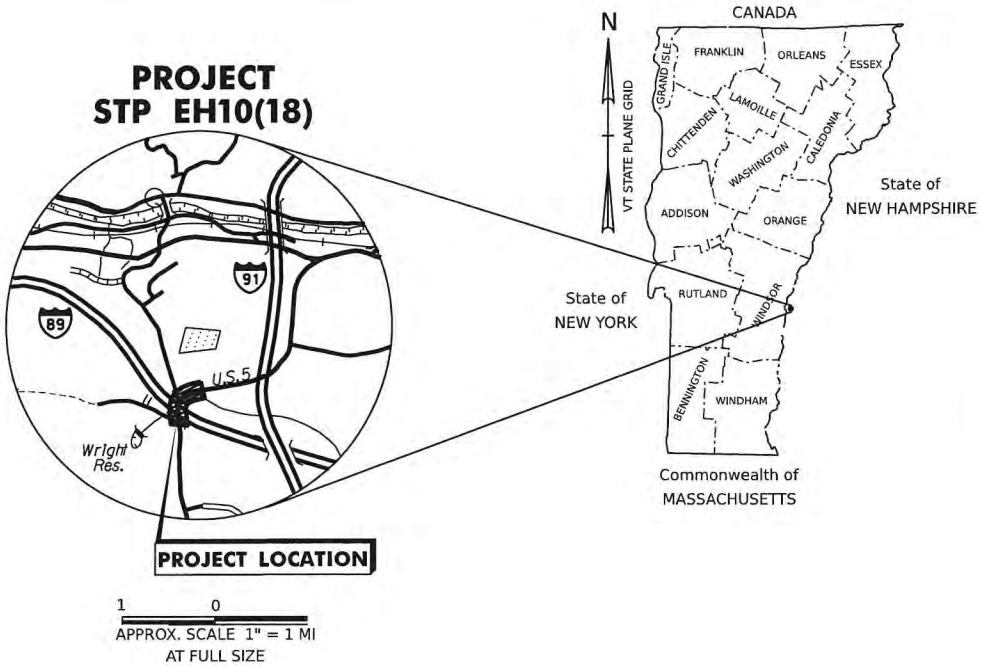




INDEX OF SHEETS	
SHEET NUMBER	TITLE
1	TITLE SHEET
2	CONVENTIONAL SYMBOLOGY LEGEND
3	TYPICAL SECTIONS
4	SURVEY TIE SHEET
5-6	QUANTITY SHEETS
7-10	GENERAL PLANS
11	EPSC NARRATIVE
12-15	EPSC PLANS
16	EROSION CONTROL DETAILS
17-21	CROSS SECTIONS
22-26	R.O.W. PLAN SET

TOWN OF HARTFORD  
COUNTY OF WINDSOR  
U.S.ROUTE 5 SIDEWALK  
MAJOR COLLECTOR

THE PROJECT IS LOCATED IN THE TOWN OF HARTFORD ALONG THE EAST AND SOUTH SIDE OF U.S. ROUTE 5 (NORTH HARLAND RD). THE PROJECT BEGINS AT THE NORTH SIDE OF THE INTERSECTION AT ARBORETUM LANE AND U.S. ROUTE 5 AND ENDS AT THE WEST SIDE OF THE INTERSECTION AT BALLARDVALE DRIVE AND U.S. ROUTE 5. WORK TO BE PERFORMED UNDER THIS PROJECT INCLUDES CONSTRUCTING SIDEWALK ALONG U.S. ROUTE 5, PAVEMENT MARKINGS, SIGNING, DRAINAGE AND OTHER INCIDENTAL ITEMS.  
LENGTH OF PROJECT = 1987.70 FEET



INDEX OF STANDARDS		
B-71A	STANDARD FOR RESIDENTIAL DRIVES	04-07-2020
B71B	STANDARD FOR COMMERCIAL DRIVES	04-07-2020
C-3A	SIDEWALK RAMPS	02-17-2022
C-3B	SIDEWALK RAMPS AND MEDIAN ISLANDS	02-17-2022
C-10	CURBING	02-11-2008
C-2A	PORTLAND CEMENT CONCRETE SIDEWALK DRIVE ENTRANCES WITH SIDEWALK ADJACENT TO CURB	10-14-2005
C-2B	PORTLAND CEMENT CONCRETE SIDEWALK DRIVE ENTRANCES WITH SIDEWALK AND GREEN STRIP	10-14-2005
D-1	PRECAST REINFORCED CONCRETE DROP INLET DETAILS	06-01-1994
D-3	TREATED GUTTERS	06-01-1994
D-10	REINFORCED CONCRETE DROP INLET TOP FOR BITUMINOUS CONCRETE CURB & GRANITE SLOPE EDGING	06-01-1994
E-1	TREE PLANTING	07-11-2017
E-2	SHRUB PLANTING	07-11-2017
E-10	ROLLED EROSION CONTROL PRODUCT, TYPE I	04-07-2020
E-11	CHECK DAM, TYPE I	04-07-2020
E-12	STABILIZED CONSTRUCTION ENTRANCE	04-07-2020
E-13	INLET PROTECTION DEVICE, TYPE I	04-07-2020
E-15	SILT FENCE	04-07-2020
E-121	STANDARD SIGN PLACEMENT - CONVENTIONAL ROAD	08-08-1995
E-191	PAVEMENT MARKING DETAILS	02-01-1999
E-192	PAVEMENT MARKING DETAILS	10-12-2000
E-193	PAVEMENT MARKING DETAILS	08-18-1995
F-4	CHAIN LINK FENCE, TYPE II DETAILS	06-01-1994
T-1	TRAFFIC CONTROL GENERAL NOTES	04-25-2016
T-10	CONVENTIONAL ROADS CONSTRUCTION APPROACH SIGNING	08-06-2012
T-24	TRAFFIC CONTROL FOR MAINTENANCE PAVEMENT MARKING OPERATION	08-06-2012
T-28	CONSTRUCTION SIGN DETAILS	08-06-2012
T-29	CONSTRUCTION SIGN DETAILS	08-06-2012
T-30	CONSTRUCTION SIGN DETAILS	02-17-2022
T-35	CONSTRUCTION ZONE LONGITUDINAL DROP-OFFS	08-06-2012
T-36	CONSTRUCTION ZONE LONGITUDINAL DROP-OFFS FOR PAVING	08-06-2012
T-44	MILEMARKER DETAILS STATE AND TOWN HIGHWAYS SQUARE TUBE SIGN	04-09-2014
T-45	POST AND ANCHOR	01-01-2013

U.S. ROUTE 5 STA. 124+72.70  
BEGIN PROJECT  
STP EH10(18)

U.S. ROUTE 5 STA. 144+60.40  
BEGIN PROJECT  
STP EH10(18)

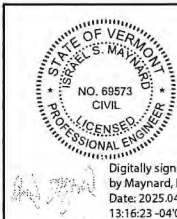
CONSTRUCTION IS TO BE CARRIED ON IN ACCORDANCE WITH THESE PLANS AND THE STANDARD SPECIFICATIONS FOR CONSTRUCTION DATED 2024, AS APPROVED BY THE FEDERAL HIGHWAY ADMINISTRATION ON JUNE 27, 2023 FOR USE ON THIS PROJECT, INCLUDING ALL SUBSEQUENT REVISIONS AND SUCH REVISED SPECIFICATIONS AND SPECIAL PROVISIONS AS ARE INCORPORATED IN THESE PLANS.

QUALITY ASSURANCE PROGRAM : LEVEL 3

SURVEYED BY : VTRANS  
SURVEYED DATE : 2017

DATUM  
VERTICAL NAVD 88 FT  
HORIZONTAL NAD 83(2011)

0 100 200  
SCALE IN FEET



**Stantec**  
Stantec Consulting Services Inc.  
193 Tilley Drive, Suite 1  
South Burlington VT U.S.A. 05403  
Phone: (802) 864-0223  
www.stantec.com

TOWN OF HARTFORD  
APPROVED *Matt Osborn* DATE 4/2/25  
PROJECT MANAGER : MATT OSBORN  
PROJECT NAME : HARTFORD SIDEWALK  
PROJECT NUMBER : STP EH10(18) / STP BP22(25)  
SHEET 1 OF 26 SHEETS



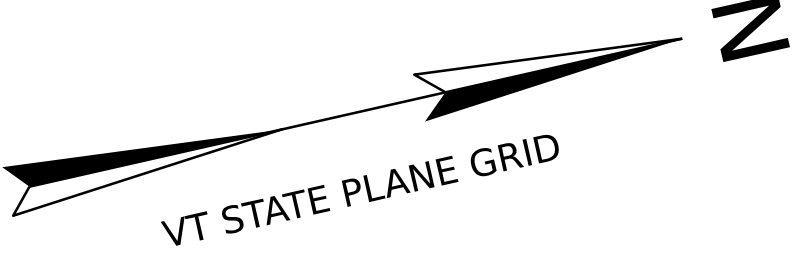
PORTLAND CEMENT CONCRETE  
SIDEWALK, 5 INCH  
STA. 124+73 TO STA. 129+75, RT

CHANGING ELEVATION OF  
SEWER MANHOLES  
STA. 125+44, RT

SIGN REMOVAL, FLAT  
SHEET ALUMINUM  
AS SHOWN - 1

SQUARE TUBE SIGN  
POST AND ANCHOR  
STA. 128+25, RT - 15 LF

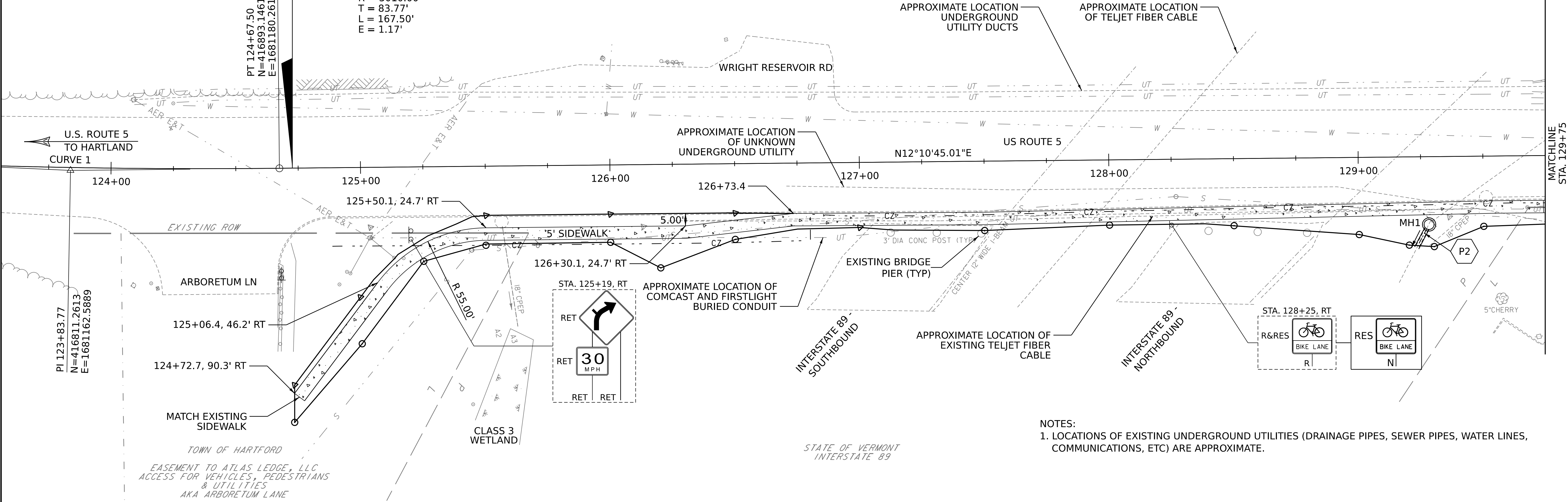
RESETTING SIGNS  
AS SHOWN - 1



SIGN LEGEND	
N	= NEW
R	= REMOVE
R&RES	= REMOVE & RESETTING
RES	= RESETTING SIGN
RET	= RETAIN
B-B	= BACK TO BACK
R&S	= REMOVE & SALVAGE
S	= SALVAGE POST

**U.S. ROUTE 5 HARTFORD  
STA. 124+72.70  
BEGIN STP EH10(18)**

CURVE (1)  
DELTA = 03°11'18"  
D = 01°54'13"  
R = 3010.00'  
T = 83.77'  
L = 167.50'  
E = 1.17'



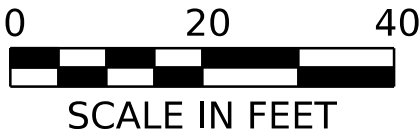
NOTES:  
1. LOCATIONS OF EXISTING UNDERGROUND UTILITIES (DRAINAGE PIPES, SEWER PIPES, WATER LINES, COMMUNICATIONS, ETC) ARE APPROXIMATE.

**DRAINAGE STRUCTURES**

STRUCTURE ID	STATION	COMMENTS
MH1	129+28.0, RT	REMOVE HEADWALL AND INSTALL MANHOLE, CAST IRON COVER, RIM 581.16'

**DRAINAGE NOTES**

P2	STA. 129+23.0, RT. TO 129+28.0, RT. NEW 10.6'X 18" CPEP, INV IN 576.66' INV OUT 576.62'
----	--



PROJECT NAME: HARTFORD  
PROJECT NUMBER: STP EH10 (18) / STP BP22(25)

FILE NAME: z10f408bdrngen.dgn  
PROJECT LEADER: G. GOYETTE  
DESIGNED BY: K. RICHARDSON  
GENERAL PLAN SHEET 1

PLOT DATE: 2-APR-2025  
DRAWN BY: P. ARMATA  
CHECKED BY: I. MAYNARD  
SHEET 7 OF 26



PORTLAND CEMENT CONCRETE  
SIDEWALK, 5 INCH  
STA. 129+75 TO STA. 129+91, RT  
STA. 130+25 TO STA. 135+75, RT

PORTLAND CEMENT CONCRETE  
SIDEWALK, 8 INCH  
STA. 129+91 TO STA. 130+25, RT

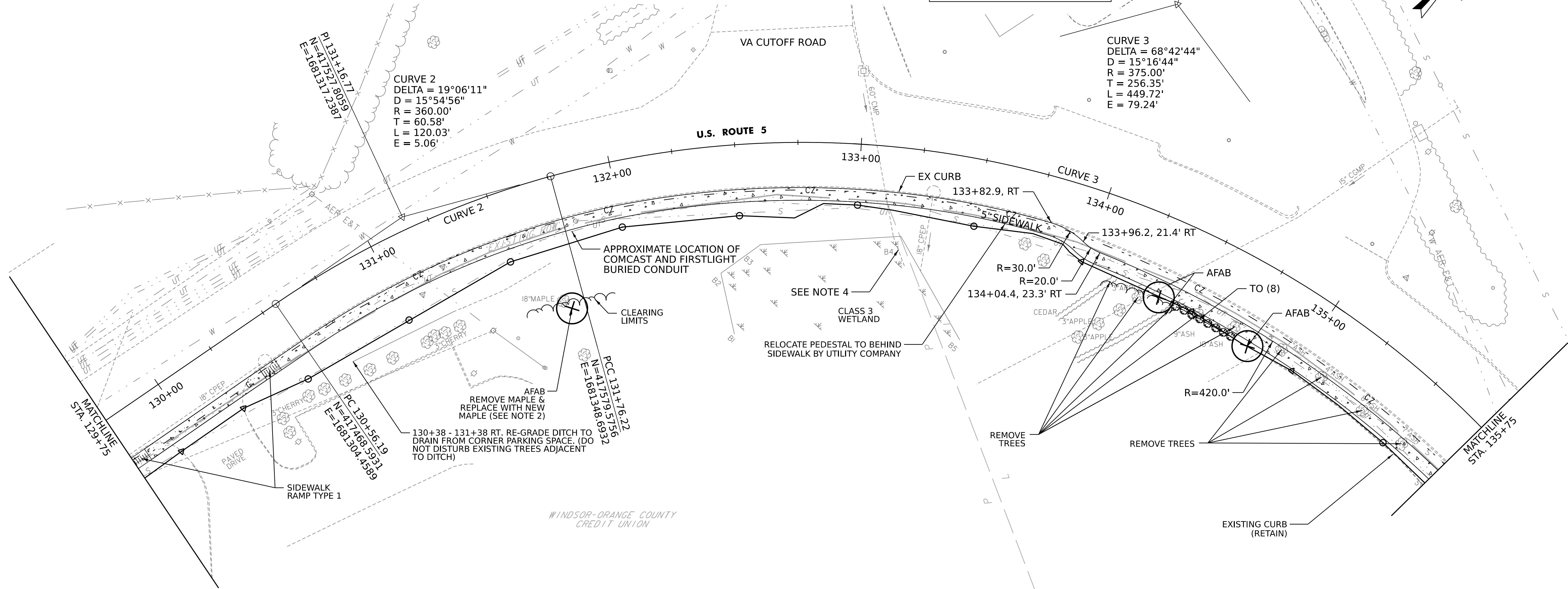
CHANGING ELEVATION OF  
SEWER MANHOLES  
STA. 131+81, RT

DRIVEWAYS  
LOCATION  
130+07, RT

MATERIAL  
PAVED

SIGN LEGEND

N = NEW  
R = REMOVE  
R&RES = REMOVE & RESETTING  
RES = RESETTING SIGN  
RET = RETAIN  
B-B = BACK TO BACK  
R&S = REMOVE & SALVAGE  
S = SALVAGE POST



NOTES:

- LOCATIONS OF EXISTING UNDERGROUND UTILITIES (DRAINAGE PIPES, SEWER PIPES, WATER LINES, COMMUNICATIONS, ETC.) ARE APPROXIMATE.
- CONTRACTOR SHALL COORDINATE WITH THE PROPERTY OWNER REGARDING EXACT LOCATION FOR THE NEW TREE.
- SAW CUTTING PAVEMENT AND REMOVAL OF EXISTING CURB PAID INCIDENTAL TO COMMON EXCAVATION.
- THE 60" CULVERT WILL BE EXTENDED AND LINED BY A SEPARATE VTRANS DISTRICT #4 PROJECT. CONTRACTOR TO COORDINATE WORK IN THIS LOCATION IF IT IS NOT COMPLETE PRIOR TO THE PROJECT.

PLANT LIST

QTY.	KEY	COMMON NAME	BOTANICAL NAME	SIZE	SPACING	CONTAINER
3	AFAB	AUTUMN BLAZE MAPLE	ACER X FREEMANII 'AUTUMN BLAZE'	2" - 2 1/2" CALIPER	AS SHOWN ON PLANS	B & B
8	TO	ARBORVITAE	THUJA OCCIDENTALIS	4' - 5' HEIGHT	3'-6" O.C.	CONTAINER



PROJECT NAME: HARTFORD  
PROJECT NUMBER: STP EH10 (18) / STP BP22(25)

FILE NAME: z10f408bdrngen.dgn  
PROJECT LEADER: G. GOYETTE  
DESIGNED BY: K. RICHARDSON  
GENERAL PLAN SHEET 2

PLOT DATE: 2-APR-2025  
DRAWN BY: P. ARMATA  
CHECKED BY: I. MAYNARD  
SHEET 8 OF 26



CAST-IN-PLACE CONCRETE CURB, TYPE B

STA. 138+79 TO STA. 138+81, RT  
STA. 139+20 TO STA. 139+23, RT

REMOVING AND RESETTNG CURB

STA. 140+83 TO STA. 140+86, RT  
STA. 141+17 TO STA. 141+18, RT

PORTLAND CEMENT CONCRETE SIDEWALK, 5' INCH

STA. 135+75 TO STA. 138+79, RT  
STA. 139+21 TO STA. 139+87, RT  
STA. 140+37 TO STA. 140+84, RT  
STA. 141+19 TO STA. 141+50, RT

PORTLAND CEMENT CONCRETE SIDEWALK, 8' INCH

STA. 138+79 TO STA. 139+21, RT  
STA. 139+87 TO STA. 140+37, RT

DETECTABLE WARNING SURFACE

STA. 140+81, RT  
STA. 141+20, RT

CHANGING ELEVATION OF SEWER MANHOLES

STA. 137+06, RT

ADJUST ELEVATION OF VALVE BOX

STA. 136+73, RT  
STA. 136+94, RT  
STA. 136+98, RT (MONITORING WELL)  
STA. 137+12, RT (MONITORING WELL)

RELOCATE HYDRANT

STA. 136+94, RT

DRIVEWAYS

LOCATION  
139+02, RT  
140+11, RT  
141+02, RT

MATERIAL  
PAVED  
PAVED  
PAVED

SIGN REMOVAL, FLAT SHEET ALUMINUM

AS SHOWN - 2

SQUARE TUBE SIGN POST AND ANCHOR

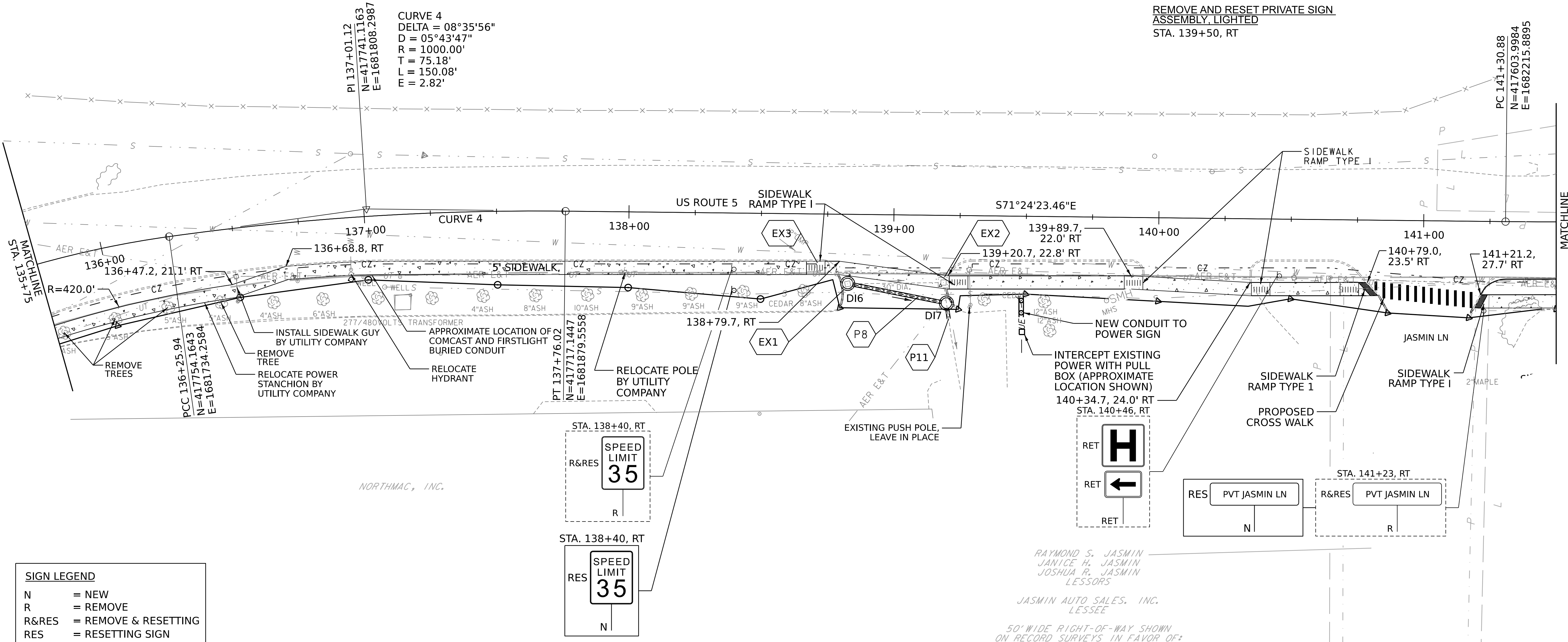
STA. 138+40, RT - 15 LF  
STA. 141+23, RT - 15 LF

RESETTNG SIGNS

AS SHOWN - 2

REMOVE AND RESET PRIVATE SIGN ASSEMBLY, LIGHTED

STA. 139+50, RT



SIGN LEGEND

N = NEW  
R = REMOVE  
R&RES = REMOVE & RESETTNG  
RES = RESETTNG SIGN  
RET = RETAIN  
B-B = BACK TO BACK  
R&S = REMOVE & SALVAGE  
S = SALVAGE POST

DRAINAGE STRUCTURES

STRUCTURE ID	STATION	COMMENTS
DI6	138+83.0, RT.	DROP INLET, TYPE "D" GRATE, RIM 581.25'
DI7	139+20.0, RT.	DROP INLET, TYPE "D" GRATE, RIM 580.50'

DRAINAGE NOTES

- P8 STA. 138+83.0, RT. TO 139+20.0, RT.  
NEW 34.0"x 18" CPEP(SL), INV IN 577.99 INV OUT 577.82
- P11 STA. 139+18.0, RT. TO 139+22.0, RT.  
NEW 4.0"x 12" CSP, CONNECT TO EXISTING PIPE,  
INV IN CONTRACTOR TO VERIFY PIPE ELEVATION PRIOR TO  
ORDERING STRUCTURE DI7, INV OUT MATCH EXISTING
- EX1 STA. 138+71.0, RT. TO 138+83.0, RT.  
REMOVE EXISTING INLET STRUCTURE
- EX2 STA. 138+83, RT. TO 139+22, RT.  
REMOVE EXISTING INLET STRUCTURE
- EX3 STA. 138+75, RT. REMOVE EXISTING  
INLET STRUCTURE AND PIPE

RAYMOND S. JASMIN  
JANICE H. JASMIN  
JOSHUA R. JASMIN  
LESSORS

JASMIN AUTO SALES, INC.  
LESSEE

50' WIDE RIGHT-OF-WAY SHOWN  
ON RECORD SURVEYS IN FAVOR OF:

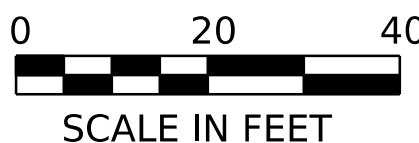
RAYMOND S. JASMIN & JANICE T. JASMIN  
DALE E. HOWE & RICHARD W. JOHNSON

RIGHT-OF-WAY WIDTH IS DESCRIBED  
AS 30' WIDE IN BOOK 426, PAGE 271

NOTES:

- LOCATIONS OF EXISTING UNDERGROUND UTILITIES (DRAINAGE PIPES, SEWER PIPES, WATER LINES, COMMUNICATIONS, ETC) ARE APPROXIMATE.
- SAW CUTTING PAVEMENT AND REMOVAL OF EXISTING CURB PAID INCIDENTAL TO COMMON EXCAVATION.

PROJECT NAME:	HARTFORD
PROJECT NUMBER:	STP EH10 (18) / STP BP22(25)
FILE NAME:	z10f408bdrngen.dgn
PROJECT LEADER:	G. GOYETTE
DESIGNED BY:	K. RICHARDSON
GENERAL PLAN SHEET 3	
PLOT DATE:	2-APR-2025
DRAWN BY:	P. ARMATA
CHECKED BY:	I. MAYNARD
SHEET 9	OF 26





PORTLAND CEMENT CONCRETE SIDEWALK, 5 INCH  
STA. 141+50 TO STA. 141+61, RT  
STA. 142+19 TO STA. 144+60, RT

PORTLAND CEMENT CONCRETE SIDEWALK, 8 INCH  
STA. 141+61 TO STA. 142+19, RT

CHANGING ELEVATION OF  
SEWER MANHOLES  
STA. 144+05, RT

ADJUST ELEVATION  
OF VALVE BOX  
STA. 142+97, RT  
STA. 144+62, RT

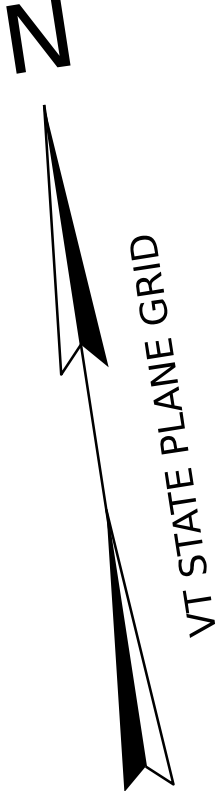
DRIVEWAYS  
LOCATION MATERIAL  
143+00 PAVED

SIGN REMOVAL, FLAT  
SHEET ALUMINUM  
AS SHOWN - 4

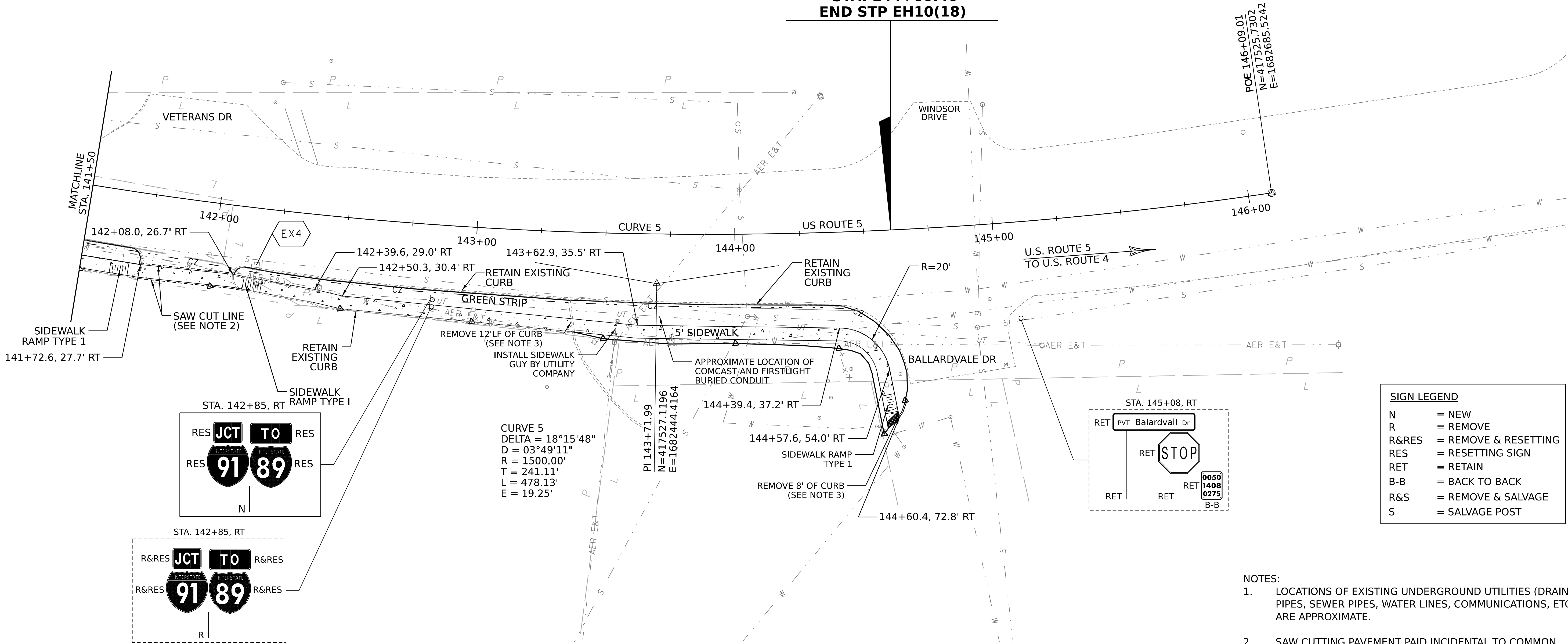
SQUARE TUBE SIGN  
POST AND ANCHOR  
STA. 142+85, RT - 15 LF

RESETTING SIGNS  
AS SHOWN - 4

DETECTABLE WARNING SURFACE  
STA. 144+60, RT



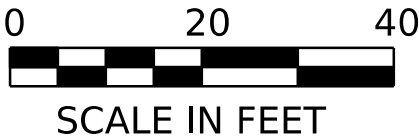
U.S. ROUTE 5 HARTFORD  
STA. 144+60.40  
END STP EH10(18)



SIGN LEGEND	
N	= NEW
R	= REMOVE
R&RES	= REMOVE & RESETTING
RES	= RESETTING SIGN
RET	= RETAIN
B-B	= BACK TO BACK
R&S	= REMOVE & SALVAGE
S	= SALVAGE POST

- NOTES:
- LOCATIONS OF EXISTING UNDERGROUND UTILITIES (DRAINAGE PIPES, SEWER PIPES, WATER LINES, COMMUNICATIONS, ETC) ARE APPROXIMATE.
  - SAW CUTTING PAVEMENT PAID INCIDENTAL TO COMMON EXCAVATION.
  - REMOVAL OF CURB PAID INCIDENTAL TO COMMON EXCAVATION.

DRAINAGE NOTES  
EX4 STA. 142+16.5, RT.  
EXISTING INLET TO REMAIN



PROJECT NAME: HARTFORD  
PROJECT NUMBER: STP EH10 (18) / STP BP22(25)

FILE NAME: z10f408bdrngen.dgn  
PROJECT LEADER: G. GOYETTE  
DESIGNED BY: K. RICHARDSON  
GENERAL PLAN SHEET 4

PLOT DATE: 2-APR-2025  
DRAWN BY: P. ARMATA  
CHECKED BY: I. MAYNARD  
SHEET 10 OF 26



A series of white, overlapping geometric lines and polygons on a black background, located on the left side of the slide.

# THANK YOU

RITA SETO

[RSETO@TRORC.ORG](mailto:RSETO@TRORC.ORG)